

GOVERNMENT CORNER RESTORATION FORM

Township 26S Range 5W Sec. 9 County DOUGLAS

State OR Date 2/4/86 No. _____

Corner Designation

S9 | S10
S16 | S15

- Condition Report Only
- Not Found
- Renewed
- Unrecorded
- Surveyed In
- Referenced Out

Previous Renewals #20, #87

Monument(s) Found: (Condition and Source)

A DCSD BC ON A L.P. PROTRUDING
12 IN. ABOVE GROUND (PER REN#87)

AXLE PER REN#20 NOT FOUND

COUNTY SURVEYORS OFFICE

T26S

S9 | S10
S16 | S15

R5W
1964

Accessories Found:

18" NOW 24" DIA 3 1/2 FT HIGH STUMP WITH A ROTTED OUT CENTER OLD
AXE'S MARKS AND A BLAZE (NO SCRIBE FOUND) BEARS S 81° E, 32.0 FT
(REC. N 88° E 31.0, DIST. POSSIBLE FACE MEASUREMENT) ORIG. BT.

NO OTHER ORIG. BT'S FOUND.

12" NOW 16" DIA. W. OAK WITH A FULLY HEALED DOUBLE BLAZE
BEARS S 48° E, 89.0 FT (AGREES WITH REC.) PER REN#20

NO OTHER BT'S PER REN#20 FOUND

4" NOW 6" DIA W. OAK WITH A FULLY HEALED DOUBLE BLAZE.
BEARS NORTH, 32.3 FT (AGREES WITH REC.) PER REN#87

NO OTHER BT'S PER REN#87 FOUND.

#152 ✓

C.S. File No. 62/31/11 C

RENEWAL

Monument Set (Procedure and Description)

Monument Detail

NONE

N/A

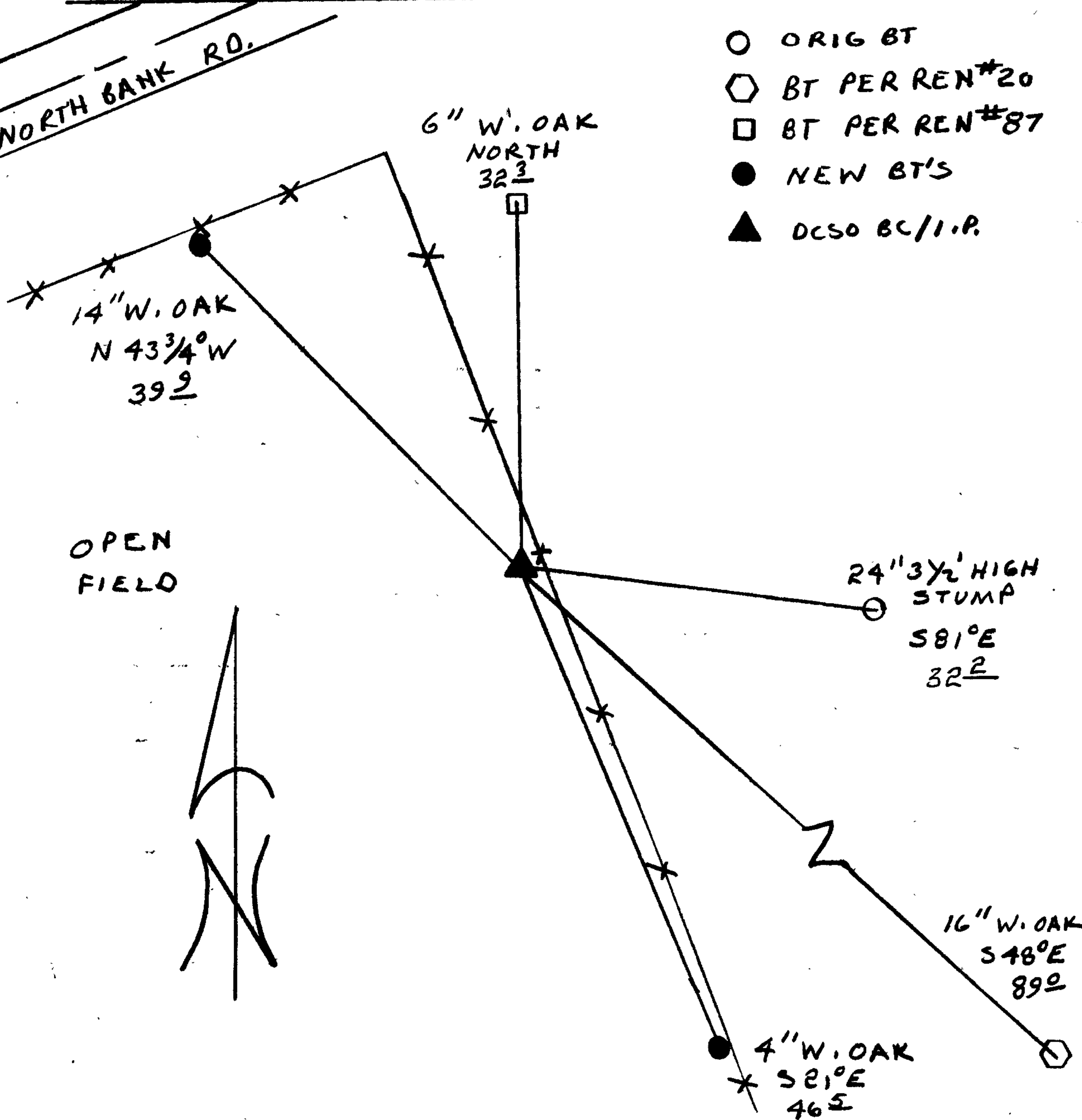
New Accessories

14" DIA. W. OAK (WAS THOUGHT TO BE NW BT PER REN#20, WE OPENED NO SCRIBING WAS FOUND) SINGLE BLAZED AND SCRIBED "T26S RSW S2 CS BT" BEARS N43³/₄°W, 39.9 FT.

4" DIA. W. OAK DOUBLE BLAZED AND SCRIBED "X BT" BEARS S21°E, 46.5 FT.

Sketch of Monument, Accessories, and General Area

Location & Comments



CORNER LIES IN A FIELD APPROX 90 FT SE OF NORTH BANK RD CENTERLINE AND 3/2 WEST OF A FENCE.

Comp. Declin. 1872° E
Agency DCSO
Party Chief RANDALL W. SMITH
Notekeeper Randall W. Smith
Witnesses STEPHEN J. FLAUSE

Surveyor's Seal

REGISTERED PROFESSIONAL LAND SURVEYOR

Larry E. Monrean

OREGON
JULY 13, 1979
LARRY E. MONREAN
#1830