

GOVERNMENT CORNER RESTORATION FORM

Township 23 S Range 7 W Sec. 3 County DOUGLAS

State OREGON Date FEB. 7 / JAN. 9, 1986 No. _____

Corner Designation

E 1/4 SECTION 3 ONLY

- _____ Condition Report Only
- _____ Not Found
- Renewed
- _____ Unrecorded
- _____ Surveyed In
- _____ Referenced Out

Previous Renewals #72 (HAINES)

MONUMENT DETAIL

Monument(s) Found: (Condition and Source)

HAINES "T" IRON PROTRUDING ABOUT 12" ABOVE GROUND, FIRMLY SET, BENT AND PARTIALLY COVERED BY DECAYING LOG.

N/A

ORIGINAL MONUMENT NOT FOUND.

HAINES MAP M18-33 SHOWS FINDING A 1" IRON PIPE. WE WERE UNABLE TO LOCATE THIS MONUMENT AT OR NEAR THE "T" IRON. I CHECKED WITH MR. HAINES WHO ~~WAS~~ CHECKED BACK THROUGH HIS NOTES. HE PROVIDED A COPY (ENCLOSED) SHOWING THE 1" IRON PIPE AT S 64° 49' W 61.23 FEET FROM HIS MONUMENT. WE WERE NOT ABLE TO LOCATE THE IRON PIPE.

Accessories Found:

NO BEARING TREES WERE FOUND AT S 3° W 79[±] FEET OR S 38° E 99[±] FEET.

FOUND:

42" DIAM. FIR STUMP 6' HIGH WITH PREVIOUSLY OPENED BLAZE (14" DEEP) SCRIBING "1/4 S" AND OLD AXE NOTCH VISIBLE (SEE PHOTO). A RING COUNT PLACES BLAZE AT ABOUT 70 YEARS PRIOR TO TREES DEATH. FROM HAINES MONUMENT THIS TREE BEARS N 88° W 80[±] FEET.

A 48" DIAM. FIR STUMP 4' HIGH WITH PREVIOUSLY OPENED POSSIBLE BLAZE BEARS N 10 1/2° E 68[±] FEET. THE APPARENT BLAZE HAS BEEN BURNED OUT. NO SCRIBING, FACE, AXE NOTCH, OR BURNED WOOD WAS LOCATED IN THE BLAZE. THIS STUMP HAS 3 AXED NOTCHES ON WESTERN EDGE.

THE BLAZES ON THE TWO FOUND TREES WERE ORIENTED TOWARD HAINES MONUMENT (SEE PHOTOS)

#1684

C.S. File No. 62/31-4

RENEWAL

Monument Set (Procedure and Description)

TO PERPETUATE THIS LOCATION AS DETERMINED BY HAINES WE SET A 1" X 30" IRON PIPE WITH A BRASS CAP MARKED AS NOTED. WE PLACE THE FOUND "T" IRON MONUMENT ALONG NORTHERLY EDGE OF BRASS CAP MONUMENT

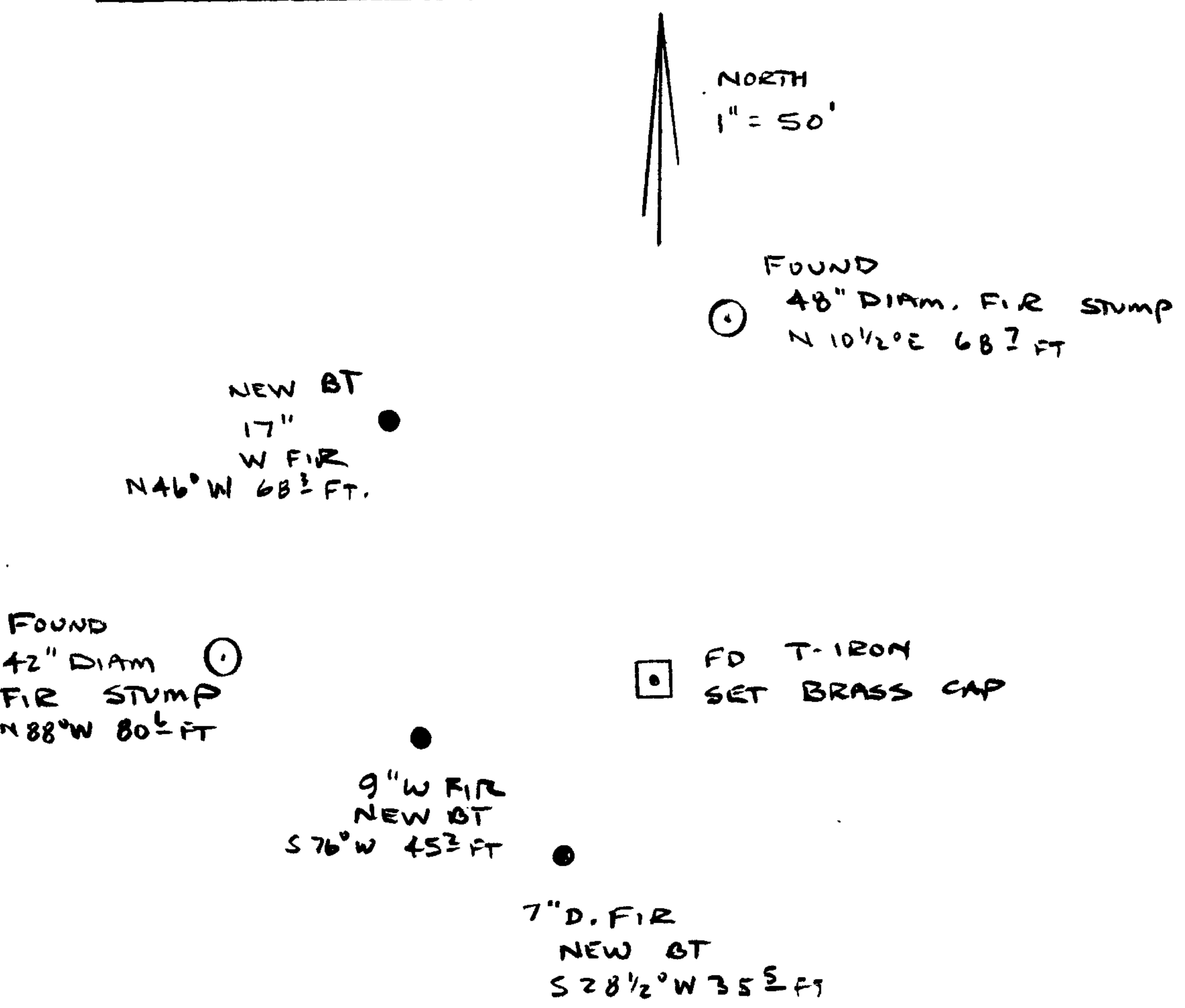
Monument Detail

DOUGLAS COUNTY SURVEYORS OFFICE
T 23 S
E 1/4 S 3
ONLY
R 7 W
1986

New Accessories

7" D. FIR DOUBLE BLAZED AND SCRIBED "1/4 S 3 CS BT" BEARS S 28 1/2° W 35 1/2 FT.
9" W. FIR DOUBLE BLAZED AND SCRIBED "1/4 S 3 CS BT" BEARS S 76° W 45 1/2 FEET.
17" W. FIR DOUBLE BLAZED AND SCRIBED "1/4 S 3 CS BT" BEARS N 46° W 68 1/2 FEET.

Sketch of Monument, Accessories, and General Area



Location & Comments

NOTE: THIS POSITION (ACCORDING TO M 18-33) IS LOCATED ON LINE BETWEEN W 1/4 SEC. 2 E CORNER OF SECTIONS 3 1/2 ON TOWNSHIP LINE.

Comp. Declin. 18 1/2° EAST
Agency DOUGLAS COUNTY SURVEYORS OFFICE
Party Chief LARRY E. MONREAN
Notekeeper " " "
Witnesses S. J. FLAUSE, RANDY SMITH, RHONDA AMOR

Address Rm 205 JUSTICE BLDG
ROSEBURG OR.

Surveyor's Seal

REGISTERED
PROFESSIONAL
LAND SURVEYOR

Larry E. Monrean

OREGON
JULY 13, 1979
LARRY E. MONREAN
#1830

T 235 R 7W Sects

2-3

Computed by

Checked by

Sta- tions	Course		Latitude		Departure		Balanced		Double Meridian Distance	Double Areas	
	Bearing	Distance	N+	S-	E+	W-	Lat.	Dep.		+	-
Turn to 1209 Pipe	N71°01'E	22.41	7.27		21.19		-1316.67	+0.37			
N ^{1/2} Sect 3							-1309.38	+22.36			
11-12	S4°56'E										
11	S30°43'E	77.50		66.63	39.60		-1832.98	-7.16			
14 to Sect 2							-1899.61	+32.44			
			2.36		38.32		-1897.25	+5.88			
1/4-16	N1°28'E										
Iron Pipe	N64°49'E	61.23	26.06		55.41		-2615.38	-11.19			
1/4 Cor Sect 3	N86°54'W	80.45	4.36			80.33	-2589.32	+44.22			
13 to Sect 3							-2584.96	-36.11			
	N12°W	71.0									
		68.76									
Iron Pipe	S63°59'E	64.89			4.55	64.73	-3185.27	-10.26			
1/4 Cor Sect 2							-3189.82	+54.47			
19 Pipe	93°27										
	2 27										
	91°34										
	N86°33'W	38.39	2.31			38.32	-1899.61	+32.44			
							-1897.25	-5.88			

Set on Trip to site on
8 Turn Right 64°25' 90 22.41 ft

REGISTERED
OREGON
LAND SURVEYOR

Wilford N. Haines

MAY 7, 1948
WILFORD N. HAINES
239

Jan 17, 1986

C.S. File No. 62/31-4

Traverse Co-Ordinates and Areas for Job No.

Sheet No.