

GOVERNMENT CORNER RESTORATION FORM

Township 235 Range 5W Sec. 1 County DOUGLAS

State OREGON Date 2/24/86 No. \_\_\_\_\_

Corner Designation

T235RSW

1/4

S1

- Condition Report Only
- Not Found
- Renewed
- Unrecorded
- Surveyed In
- Referenced Out

Previous Renewals #2, #59, 1983 DEPENDENT RESURVEY

MONUMENT DETAIL

Monument(s) Found: (Condition and Source)

A 2 3/8 INCH DIAMETER BRASS CAP (MARKED AS AT RIGHT) ON A 1 1/4 INCH O.D. IRON PIPE IS FIRMLY SET AND PROTRUDES 12 INCHES FROM THE GROUND. SET IN RENEWAL #59

RENEWAL #2 DESCRIBES AN IRON BAR 3/8" X 1 1/2" X 48" AS THE CORNER MONUMENT. AN IRON BAR MEASURING 1/2 X 1 5/8 INCHES FIRMLY SET AND PROTRUDING 11 INCHES ABOVE GROUND BEARS S 53 3/4° E, 1 8 FT DISTANT FROM THE BRASS CAP MONUMENT.

BOTH OBJECTS ABOVE ARE SET IN A NORTH SOUTH FENCE LINE.

COUNTY SURVEYORS OFFICE

NORTH 1/4 COR.

S | 1

T23.5 R5W

Accessories Found:

ORIGINAL TREES SEARCHED FOR, ONE FOUND. A Y. OAK 28 INS. DIAM. ABOVE A 39" D.B.H. BLACK OAK PREVIOUSLY OPENED NOW ROTTED, NO CLEAR EVIDENCE OF BLAZE OR SCRIBING, BEARS S 37 1/2° W, 36 3/4 FT. (RECORD S 36° W, 36 3/4 FT.) OTHER ORIGINAL BEARING TREE REMOVED BY LOGGING CATWORK.

FROM RENEWAL #2 ONE BEARING TREE IS FOUND. A BLACK OAK 10" IN DIAM. NOW A 12 INCH D.B.H. W. OAK (DISAGREE WITH ORIGINAL I.D.) BEARS S 35° W, 6 9 FEET DISTANT (RECORD S 39° W, 6 9 FT.) TREE HAS A FULLY HEALED DOUBLE BLAZE. OTHER BEARING TREE NOT FOUND DUE TO LOGGING CATWORK.

STUMPS FOR RENEWAL #59 BEARING TREES FOUND. A 6" R. FIR NOW A 12 INCH DIAMETER 1 FOOT TALL FIR STUMP WITH PARTIAL LOWER BLAZE REMAINING, NO SCRIBING FOUND, BEARS S 15° W, 14 1/2 FEET DISTANT (AS PER RECORD). A 5" R. FIR NOW A 2.5 INCH DIAMETER FIR STUMP 6 INCHES TALL WITH PARTIAL LOWER BLAZE REMAINING, NO SCRIBING VISIBLE, BEARS S 60° E, 36 1/2 FEET (AS PER RECORD).

#120 T23-5\*

#172 T22-5\*

C.S. File No. 62/31-2 C

RENEWAL

Monument Set (Procedure and Description)

Monument Detail

NONE  
 (B.C. MONUMENT AGREES BEST WITH  
 REMAINING ORIGINAL EVIDENCE.)

N/A

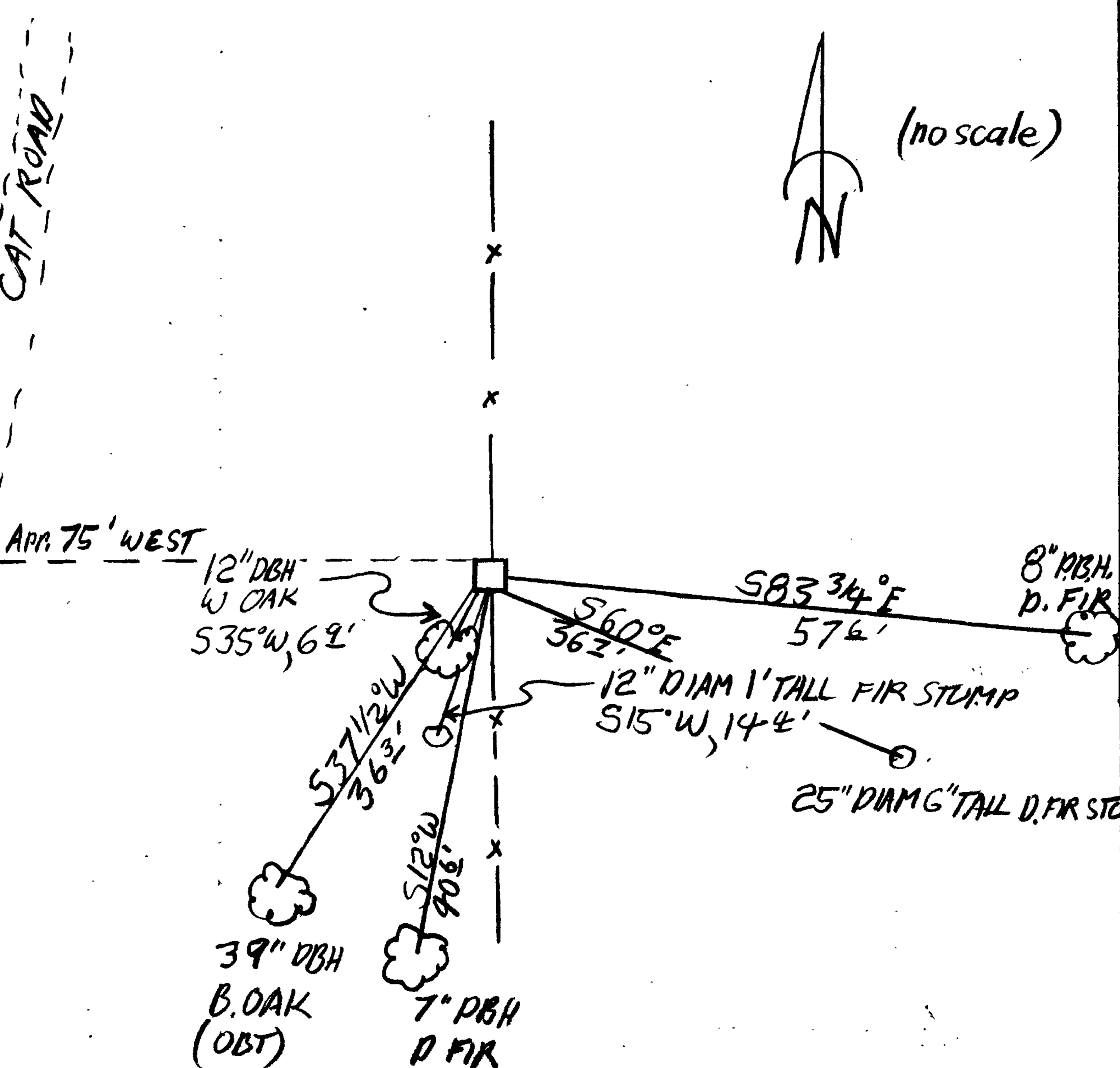
New Accessories

AN 8 INCH D.B.H. DOUGLAS FIR SCRIBED 1/4 S1 CS BT ON A DOUBLE BLAZE, BEARS  
 S 83 3/4° E, 576 FEET DISTANT.

A 7 INCH D.B.H. DOUGLAS FIR SCRIBED 1/4 S1 CS BT ON A DOUBLE BLAZE  
 BEARS S 12° W, 406 FEET DISTANT.

Sketch of Monument, Accessories, and General Area

Location & Comments



CORNER IS LOCATED IN A NORTH-SOUTH FENCELINE ON A NORTH-WEST SLOPE APPROXIMATELY 75 FEET EAST OF A CAT ROAD

Comp. Declin. 18 1/2° E  
 Agency RCSD  
 Party Chief S. J. FLAUSE  
 Notekeeper Stephen John Flause  
 Witnesses R. W. SMITH

Surveyor's Seal

REGISTERED  
 PROFESSIONAL  
 LAND SURVEYOR

*Larry E. Monrean*  
 OREGON  
 JULY 13, 1979  
 LARRY E. MONREAN  
 #1830