

OREGON CORNER RESTORATION FORM

FILED *JS*

MAY 2 1986

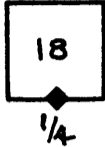
Section 18 Township 25S Range 8W

County Douglas Date 3/7/86

COUNTY SURVEYOR
DOUGLAS COUNTY, ORE.

Corner Designation

T25S R8W



- Condition Report Only
- Not Found
- Renewed
- Unrecorded
- Surveyed In
- Referenced Out

Previous Renewals/Surveys, etc. Renewed by M. S. McDowell in
April 1977

Monument(s) & Accessories Found: (Condition and Source)

3/4" iron pipe

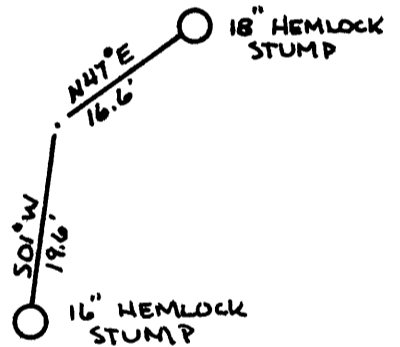
18" Hemlock stump, Weyco tag and "W" nail

16" Hemlock stump, Weyco tag and "W" nail

Area logged in 1985

Monument Detail

Sketch



Monument Set (Procedures and Description)

New Accessories

Location & Comments

Bearings to BT's Compass Declination 19 1/2"
are by staff, Firm/Agency Weyerhaeuser
compass distances Alleghany Engineering
are to the center Address P.O. Box 389
of tree. North Bend, OR 97459
 Party Chief J. Story
 Notes J. Story
 Witness B. Edwards

Surveyor's Seal



Oregon Corner (F6)

U.S. File No. 62/30-8 c

#112 ✓