

FILED *JH*

OREGON CORNER RESTORATION FORM

MAR 27 1986

Section SW 31 Township 31 S Range 6 W

County DOUGLAS Date 1/6/86

COUNTY SURVEYOR  
DOUGLAS COUNTY, ORE.

Corner Designation

Sec 36, T31S, R7W	Sec 31, T31S, R6W
Sec 1, T32S, R7W	Sec 6, T32S, R6W

Condition Report Only  
 Not Found  
 Renewed  
 Unrecorded  
 Surveyed In  
 Referenced Out

Previous Renewals/Surveys, etc.

Corner set by Howard W. Johnstone ( L.S. 498 ) in Feb, 1969

Map on County file SEE M-33-49

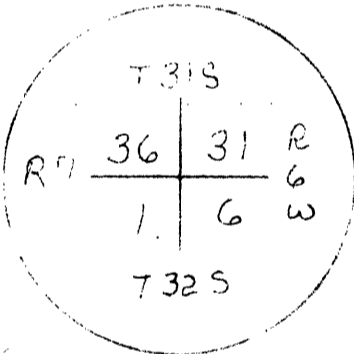
Monument(s) & Accessories Found: (Condition and Source)

Found monument (5/8 inch iron rod w/AL. cap mkd. as shown) as set by Johnstone in good condition.

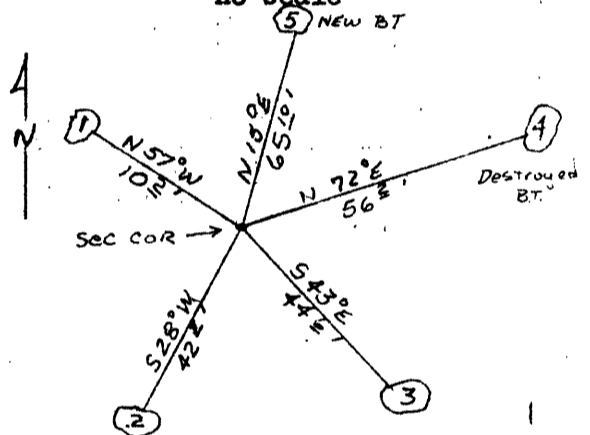
Bearing trees

- ① 9" D.F. now 15", has good scare and is in good condition
- ② 16" D.F. now 25", has good scare and is in good condition
- ③ 8" D.F. now 12", has good scare and is in good condition
- ④ 9" D.F. now a 13" stump, with 10" above ground

Monument Detail



Sketch Bearing Trees no scale



Monument Set (Procedures and Description)

NOT NEEDED

New Accessories

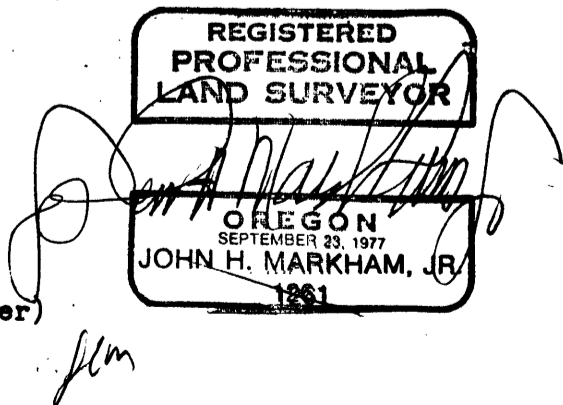
New Bearing tree

- ⑤ 15" Madrona, bears N 15° E 65.10 ft., mkd, T 31 S, R 6 W, S 31 BT

Location & Comments

Surveyor's Seal

Compass Declination 10° E  
 Firm/Agency \_\_\_\_\_  
John H. Markham Jr.  
 Address P.O. Box 802  
Myrtle Creek, OR, 97457  
 Party Chief Raymond Brown  
 Notes \_\_\_\_\_  
 Witness Jim Jenks (C&D Lumber)



#172 T. 32-6 X  
 #116 T. 32-7 X  
 #159 T. 31-4 X  
 #126 T. 31-7 X

C.S. File No. 62/30-1  
 C