

GOVERNMENT CORNER RESTORATION FORM

Township 32S Range 5W Sec. 21 County DOUGLAS

State OREGON Date SEPT. 17, 1985 No. \_\_\_\_\_

Corner Designation

1/4

521 | 522

Previous Renewals #79, #170, #204

Monument(s) Found: (Condition and Source)

FROM RENEWAL # 170 A CENTER PUNCHED  
5/8 INCH DIAMETER IRON ROD FIRMLY SET  
AND PROTRUDING APPROX. 3 INCHES FROM  
GROUND.

NO EVIDENCE OF WENDEROTH 1 INCH  
IRON PIPE FROM RENEWAL #79 FOUND.

NA

Accessories Found:

NO EVIDENCE OF ORIGINAL BEARING TREES FOUND.  
NO EVIDENCE OF BEARING TREES FROM RENEWAL #79 FOUND.  
FROM RENEWAL #170 ALL ACCESSORIES FOUND. AN 8" W. OAK  
NOW AN 11 INCH DBH. WHITE OAK WITH A FULLY HEALED DOUBLE BLAZE  
BEARS S44 1/2° E, 85 1/2 FT. DISTANT AS PER RECORD. A POWER POLE  
MARKED COPCO WITH A PK. NAIL SET NEAR BASE BEARS  
E2908

T  
135

S20°W, 41 1/2 FT DISTANT AS PER RECORD. COR. IS APPROXIMATELY  
32° FT. NORTH OF R/W FENCE.

FROM RENEWAL # 204 A BEARING OBJECT AND A BEARING  
TREE FOUND. AN UNRECORDED 5/8 INCH DIAM. IRON ROD IN CENTERLINE  
OF GUILNES CREEK FRONTAGE RD. (CO. RD. # 303) LOCATED BY METAL DETECTOR NOW  
BURIED UNDER SEAL-COAT, BEARS N 23° W, 37° FT. DISTANT. A 13 INCH W. OAK NOW  
A 14 INCH D.B.H. W. OAK WITH A FULLY HEALED DOUBLE BLAZE BEARS  
S77° E 88 1/2 FT. DIST. AS PER RECORD.

- Condition Report Only
- Not Found
- Renewed
- Unrecorded
- Surveyed In
- Referenced Out

MONUMENT DETAIL

RENEWAL

Monument Set (Procedure and Description)

Monument Detail

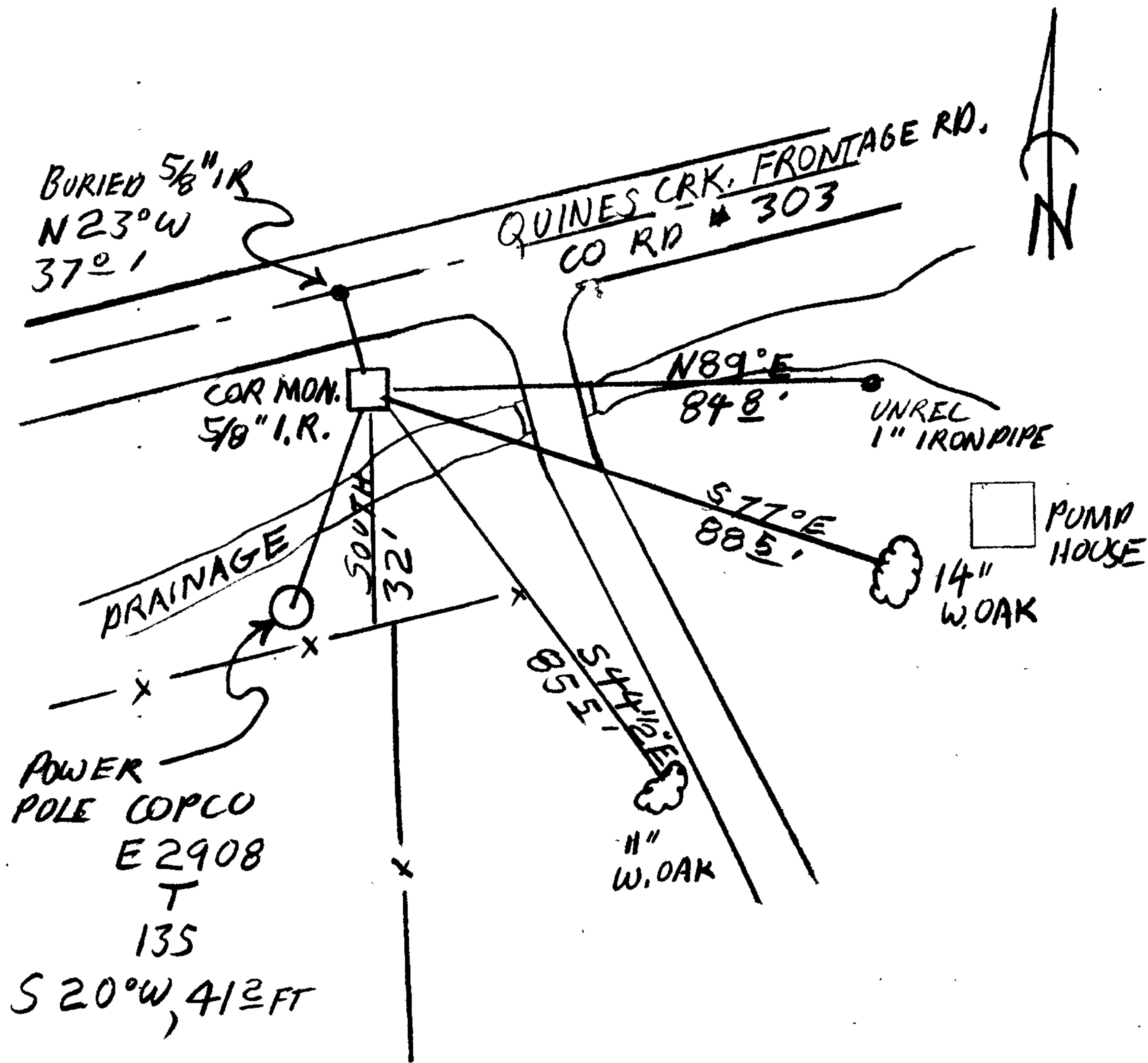
PARTIAL COPIES OF OSHD NOTES IN CS FILE 53/52 FROM RENEWAL #170 SUGGEST THAT OSHD REFERENCED OUT THE 1" IRON PIPE SET AS THE 1/4 CORNER IN BYRON'S RENEWAL # 79 AND THEN REESTABLISHED THE 1/4 CORNER AS A 5/8" IRON ROD. CORNER RENEWAL # 204 PERPETUATES THIS POSITION AND THE SURVEY FILED IN THE DCSD AS M 83-6 INDICATES THAT THE MONUMENT AGREES WELL WITH SECTION CORNER 1/2 MILE SOUTH.

N/A

New Accessories

AN UNRECORDED 1 INCH DIAM. IRON PIPE FIRMLY SET AND PROTRUDING 8 INCHES FROM GROUND BEARS N 89° E, 84 8/8 FT. DIST.

Sketch of Monument, Accessories, and General Area



Location & Comments

MONUMENT IS SOUTHWEST OF DRIVEWAY ENTRANCE AT 600 & 602 QUINES CREEK FRONTAGE RD (CO. RD # 303) (SEE SKETCH)

Comp. Declin. 19 1/2° E  
Agency DCSD  
Party Chief R W SMITH  
Notekeeper S J FLAUSE  
Witnesses Stephen John Flause

Surveyor's Seal

REGISTERED PROFESSIONAL LAND SURVEYOR

Larry E. Monrean

OREGON  
JULY 13, 1979  
LARRY E. MONREAN  
#1830