

GOVERNMENT CORNER RESTORATION FORM

Township 32S Range 5W Sec. 20 County DOUGLAS

State OREGON Date SEPTEMBER 17, 1985 No. \_\_\_\_\_

RECEIVED  
10/8/85

Corner Designation

520	521
529	528

- Condition Report Only
- Not Found
- Renewed
- Unrecorded
- Surveyed In
- Referenced Out

Previous Renewals #78 AND 1962 RESURVEY

Monument(s) Found: (Condition and Source)

A B.L.M. BRASS CAP (MARKED AS AT RIGHT) ON A 2 1/2 INCH DIAM. IRON PIPE, FIRMLY SET AND PROTRUDING 5 INCHES ABOVE GROUND, FROM 1962 RESURVEY

A 3 1/4 x 2 1/2 INCH "T" IRON OF UNKNOWN ORIGINAL, FIRST RECORDED IN RENEWAL #78, IS FIRMLY SET AT SOUTHEAST EDGE OF CAP AND PROTRUDES 5 INCHES ABOVE GROUND.

MONUMENT DETAIL

U.S. DEPT. OF THE INTERIOR  
BUREAU OF LAND MANAGEMENT

T32 S R5W

520	521
529	528

1962

Accessories Found:

NO ORIGINAL BEARING TREES FOUND.

FROM RENEWAL #78 BOTH BEARING TREES FOUND. A 10 INCH FIR NOW A DOUBLE TRUNKED 18 INCH AND 35 INCH D.B.H. DOUGLAS FIR WITH A FULLY HEALED BLAZE ON THE SMALLER TRUNK BEARS N 78° W, 47 ± FEET DISTANT TO ROOT CROWN. (RECORD N 74° 45' W 45 ± FT IS TO CENTER OF SCRIBED TRUNK.) A 34 INCH PINE NOW A 46 INCH D.B.H. PINE WITH A FULLY HEALED SINGLE BLAZE BEARS S 58° E, 72 ± FEET DIST. (RECORD S 55° 30' E, 72 ± FEET; DISTANCE IS GOOD TO FACE OF BLAZE)

FROM 1962 RESURVEY ONE BT AND AN IRON PIPE FOUND IN ADDITION TO ABOVE. AN ASH, 8 INS. DIAM., NOW A 16 INCH D.B.H. ASH HAVING A PARTIALLY HEALED BLAZE WITH ILLEGIBLE SCRIBING VISIBLE BEARS S 49 1/2° E, 94 ± FEET DIST. (RECORD S 85° E, 94 ± FEET DIST. DISTANCE GOOD TO FACE OF BLAZE.) AN IRON PIPE 1 1/2 INS. DIAM. NOW A 1 1/4 INCH O.D. IRON PIPE PROTRUDING 12 INCHES FROM GROUND BEARS N 21° W, 30 ± FT DIST (RECORD N 19° W 30 ± FT DIST.)

AN UNRECORDED NEW BEARING TREE, AN 8 INCH D.B.H. INCENSE CEDAR WITH A SINGLE PARTIALLY HEALED BLAZE SCRIBED T32S R5W S21 BT BEARS N 62° E, 76 ± FEET DISTANT.

#219 X

C.S. File No. 62/29-20

RENEWAL

Monument Set (Procedure and Description)

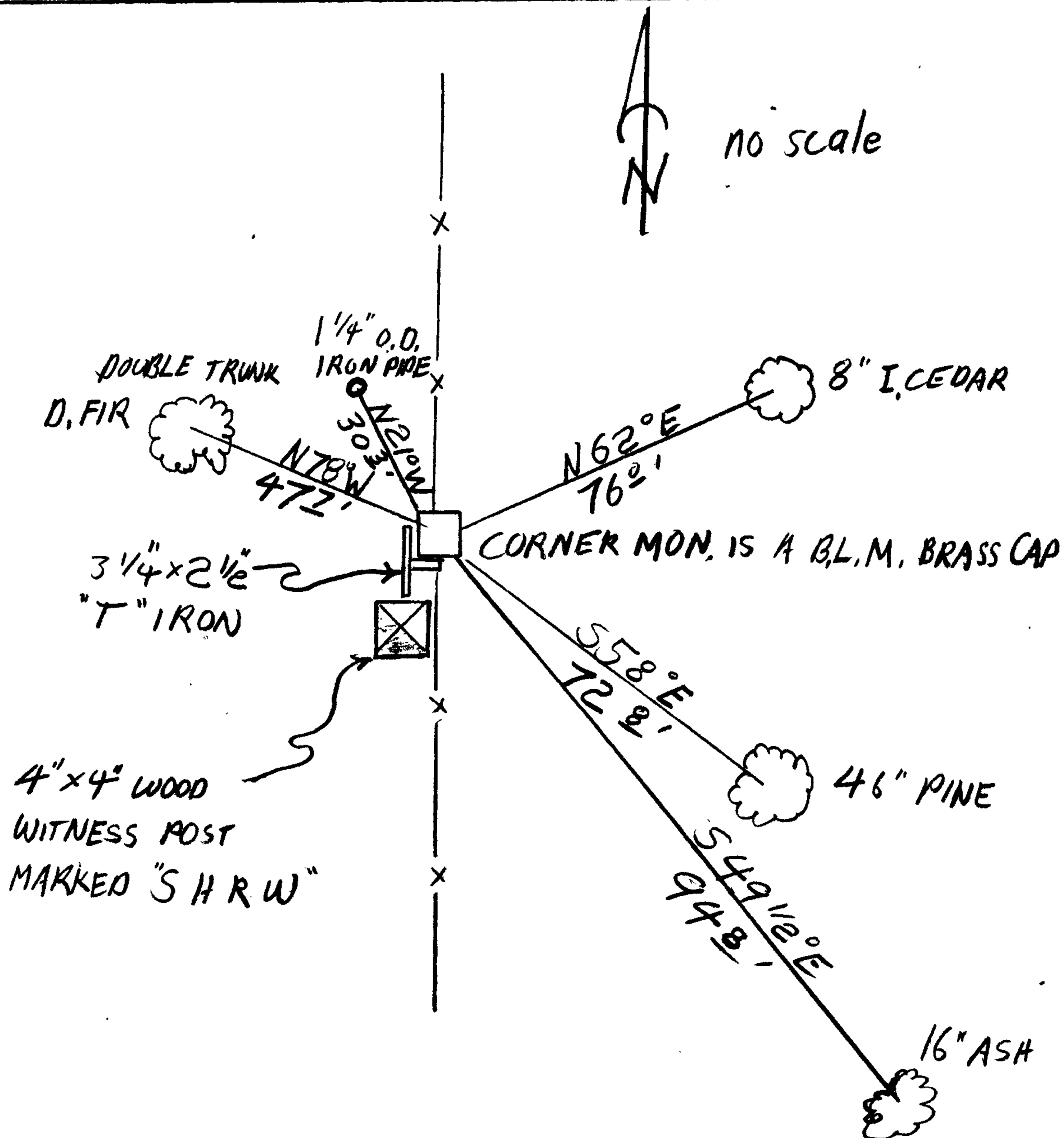
Monument Detail

MONUMENT POSITION ACCEPTED AS FOUND.

New Accessories

BEARING TREE TAGS MARKED TO INDICATE CHANGES NOTED IN 'ACCESSORIES FOUND'.

Sketch of Monument, Accessories, and General Area



Location & Comments

MONUMENT LIES 350 FT ± SOUTH FROM COUNTY RD. #303 IN A NORTH-SOUTH FENCELINE AND AT THE EAST EDGE OF A OPEN FIELD.

Comp. Declin. 18° 12' E  
Agency DCSO  
Party Chief RANDALL W. SMITH  
Notekeeper STEPHEN JOHN FLAKE  
Witnesses Stephen John Flake

Surveyor's Seal

REGISTERED PROFESSIONAL LAND SURVEYOR

Larry E. Monrean

OREGON  
JULY 13, 1979  
LARRY E. MONREAN  
#1830