

GOVERNMENT CORNER RESTORATION FORM

Township 32S Range 4W Sec. 7 County DOUGLAS
State OREGON Date AUG 21, 1985 No. _____

RECEIVED
10/7/85

Corner Designation

R5W R4W
S12 | S7

- Condition Report Only
- Not Found
- Renewed
- Unrecorded
- Surveyed In
- Referenced Out

Previous Renewals ^{T32-4} #59, ^{T32-4} #67, 1971 ^{#109, T32-5} DEPEND. RESURVEY

Monument(s) Found: (Condition and Source)

A DCSO BRASS CAP (MARKED AS AT RIGHT) ON AN IRON PIPE, FIRMLY SET AND PROTRUDING APPROX. 4 INCHES ABOVE GROUND. B.C. FROM RENEWAL #67. MON. NOT DISTURBED TO CHECK FOR IRON BAR IN RENEWAL #59.

MONUMENT DETAIL

COUNTY SURVEYORS OFFICE

T 32 S

1/4 S 12 | 7

R5W | R4W

1956

Accessories Found:

NO EVIDENCE OF ORIGINAL BEARING TREES FOUND.
FROM RENEWAL #59 ONE BT FOUND. NO EVIDENCE OF NW BT FOUND.
A 10" FIR NOW A 34 INCH DBH, D. FIR WITH A FULLY HEALED DOUBLE BLAZE BEARS N56°E, 143² FT. DIST. (RECORD N56°E, 143⁰ FT. A POSSIBLE FACE MEAS.)
FROM RENEWAL #67 A 12" LIVE OAK NOW AN 18 INCH DBH LIVE OAK, WITH A FULLY HEALED DOUBLE BLAZE BEARS N84°E, 163² FT. DIST (RECORD N85°E, 163⁰ FT. DISTANCE TO CENTER OF TRUNK BLAZE HEIGHT.)

#218 T.32-5 X
#149 T.32-4 X

RENEWAL

Monument Set (Procedure and Description)

Monument Detail

N/A

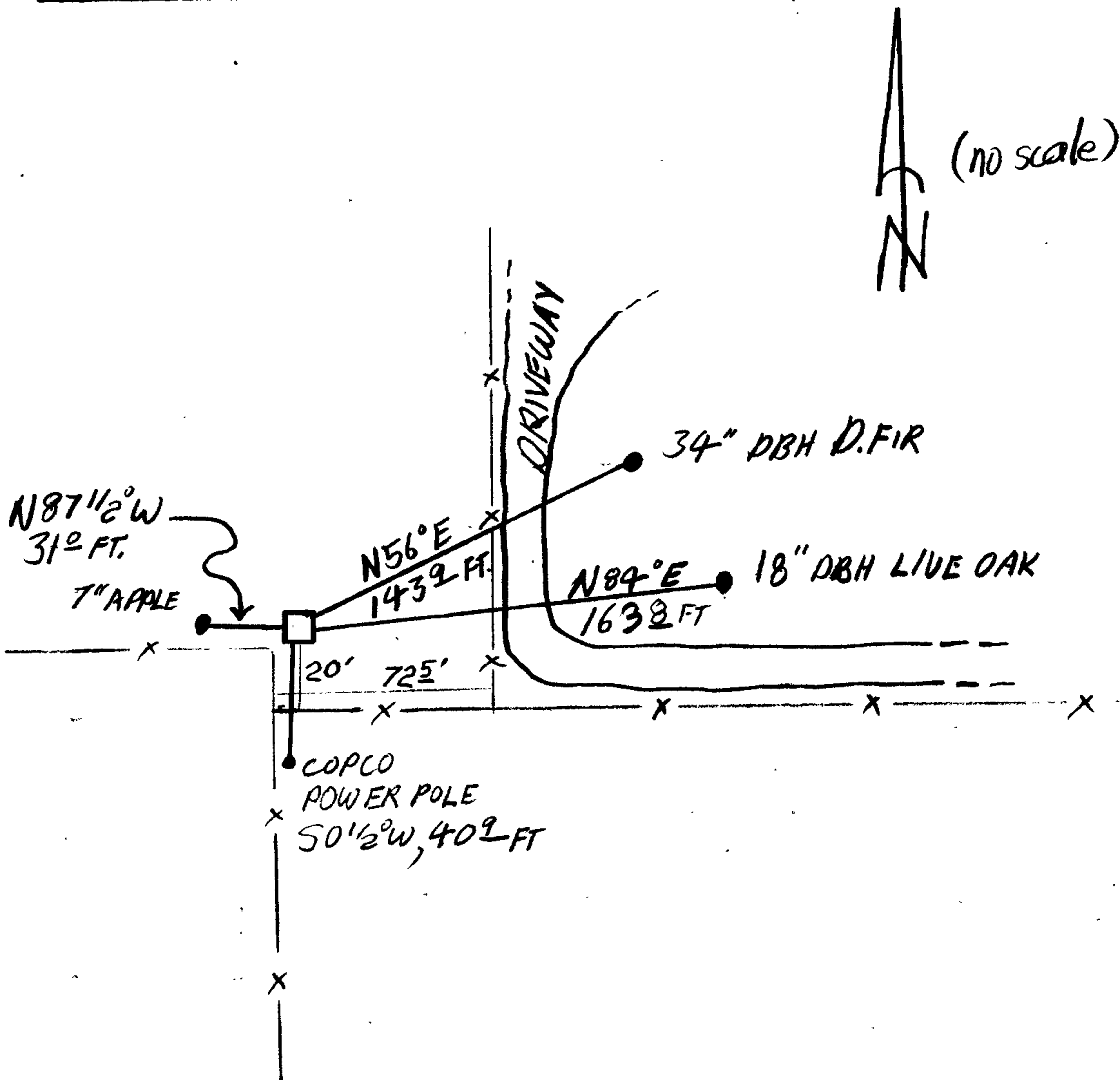
N/A

New Accessories

AN APPLE TREE 7 INCHES IN DIAMETER, 1 1/2 FT ABOVE GROUND (STUNTED NO DISH POSS.) BARK SCRIBED "X BT" BEARS N 87 1/2° W, 31° FT. DISTANT.

A POWER POLE MARKED "COPCO" BEARS S 0 1/2° W, 40° FT. DISTANT.
E 698
A 339

Sketch of Monument, Accessories, and General Area



Location & Comments

CORNER IS APPROXIMATELY 900 FT. NORTH OF YEUST ROAD (CO. RD. # 287) AND APPROXIMATELY 500 FT. EAST OF COW CREEK. NEAR WEST END OF DRIVEWAY TO B.B. LAWRENCE RESIDENCE.

Comp. Declin. 18 1/2° E
Agency DCSD
Party Chief STEPHEN JOHN FLAUSE
Notekeeper *[Signature]*
Witnesses RANDALL W. SMITH

Surveyor's Seal

REGISTERED PROFESSIONAL LAND SURVEYOR

Larry E. Monrean

OREGON
JULY 13, 1979
LARRY E. MONREAN
#1830