

GOVERNMENT CORNER RESTORATION FORM

Township 32 S Range Z W Sec. 5 County DOUGLAS

State OR Date 9-5-85 No. _____

Corner Designation

56 | 55
57 | 58

- Condition Report Only
- Not Found
- Renewed
- Unrecorded
- Surveyed In
- Referenced Out

Previous Renewals NONE

MONUMENT DETAIL

Monument(s) Found: (Condition and Source)

FOUND STONE MEASURING 14 X 9 X 7 INCHES (RECORDED 15 X 12 X 8) LYING SLIGHTLY RECESSED IN THE GROUND (NOT FIRMLY SET)

NO NOTCHES OR MARKS DISTINGUISHABLE.

Accessories Found:

- A FIR 30 NOW 53 INCH DIAM. WITH WELL HEALED BLAZE BEARS $S 8^{\circ} E 43^{\circ}$ FT. (REC. 46² CHECKS WHEN MEASURED ALONG GROUND SLOPE). WE OPEN BLAZE AND FIND SCRIBING "S B".

- RECORD 12" NOW 27" FIR WITH WELL HEALED SINGLE BLAZE BEARS $S 24^{\circ} 1/2' W$ 27⁶ FT (REC. 29² CHECKS WHEN MEASURED ALONG GROUND SLOPE). WE OPEN BLAZE AND FIND FRAGMENTARY SCRIBE MARKS 4 TO 5 INCHES FROM CENTER OF TREE.

#126 ✓

C.S. File No. 62/29-160

RENEWAL

Monument Set (Procedure and Description)

SET 1" X 30" IRON PIPE WITH BRASS CAP 2 1/2 INCHES DEEP AT POSITION OF FOUND STONE. CAP IS MARKED. STONE IS PLACED AT SSE EDGE OF BRASS CAP MONUMENT.

Monument Detail

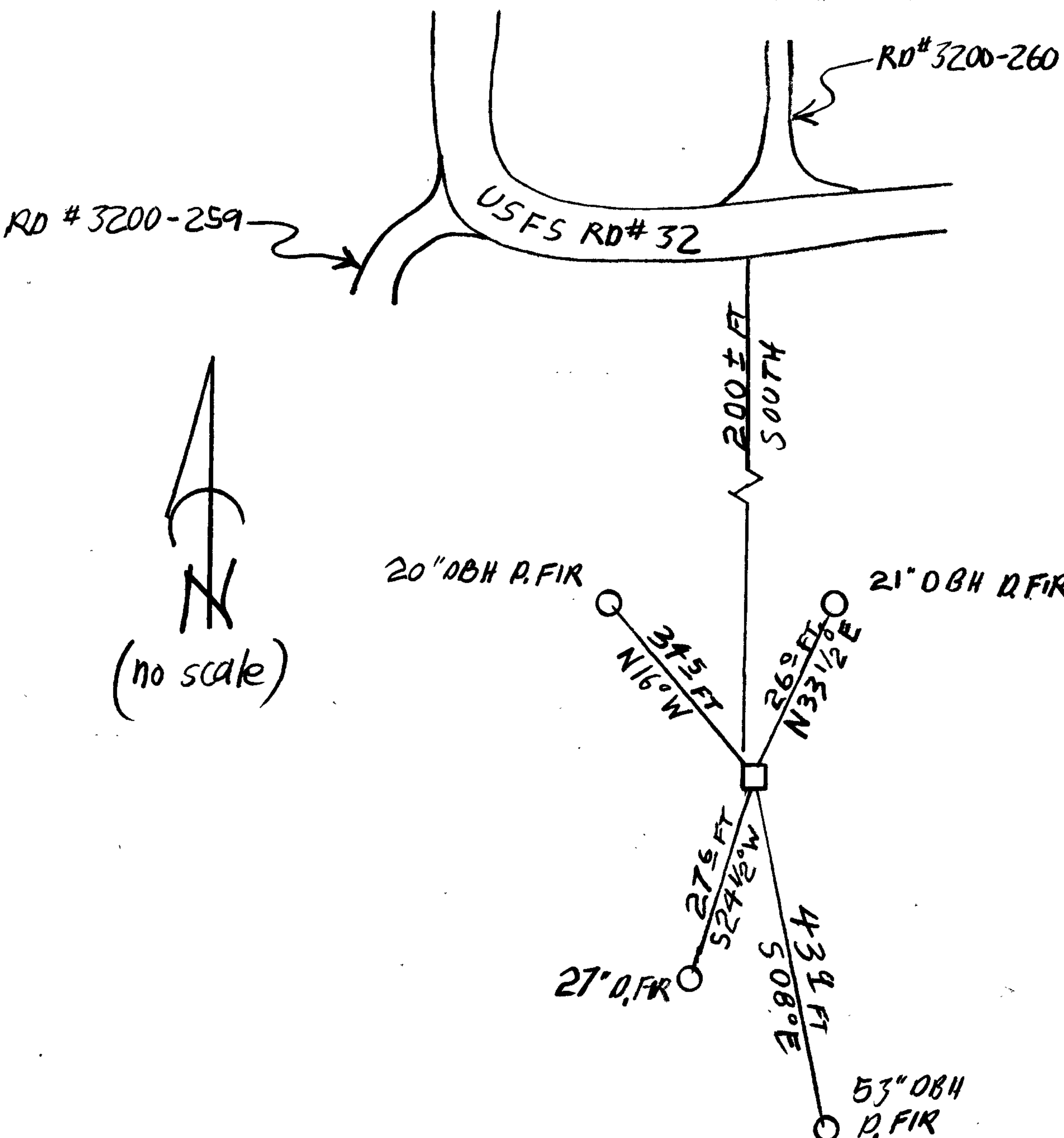
DOUGLAS COUNTY SURVEYOR
 T 32 S
 R 2 W
 36 | 35
 57 | 58
 1985

New Accessories

20" DIA. W. FIR DOUBLE BLAZED AND SCRIBED "T32SR2W56ES BT" BEARS N 16° W 34⁵/₈ FT.

21" DIA. D. FIR DOUBLE BLAZED AND SCRIBED "T32SR2W56ES BT" BEARS N 33 1/2° E 26° FT

Sketch of Monument, Accessories, and General Area



Location & Comments

MONUMENT LIES APPROXIMATELY 200± FT. SOUTH FROM THE INTERSECTION OF USFS ROADS 32 AND 3200-260.

Comp. Declin. 18 1/2° EAST
 Agency DOUGLAS COUNTY SURVEYOR'S OFFICE
 Party Chief LARRY E. MONREAN
 Notekeeper LARRY E. MONREAN
 Witnesses S.J. FLAUSE, R.W. SMITH

Surveyor's Seal

REGISTERED
 PROFESSIONAL
 LAND SURVEYOR

Larry E. Monrean

OREGON
 JULY 13, 1979
 LARRY E. MONREAN
 #1830