

GOVERNMENT CORNER RESTORATION FORM

Township R9S Range 7W Sec. 6 County DOUGLAS

State OR Date 12/11/85 No. _____

Corner Designation

API
DLC44

- Condition Report Only
- Not Found
- Renewed
- Unrecorded
- Surveyed In
- Referenced Out

Previous Renewals #4, #271

Monument(s) Found: (Condition and Source)

NONE

MONUMENT DETAIL

N/A

Accessories Found:

- B.O. PER REN #271
- 5/8" I.R. WITH ALUM. CAP STAMPED "APIA"
BEARS N84 1/2°W, 110.85 FT. (AGREES WITH REC)
- 5/8" I.R. WITH ALUM. CAP STAMPED "APIB"
BEARS N84 1/2°W, 216.11' (REC. N84 1/2°W 105.26', 216.11' IS 105.26' + 110.85')
- 5/8" I.R. BEARS N20°W, 129.77' (APIC) ALUM CAP GONE I.R. BENT NORTHERLY
- 22" NW 24" DIA D.FIR WITH PK NAIL BEARS N20°W, 512.90'
(REC N20°W 383.13', 512.90 IS 129.77' + 383.13')
- NE BT PER REN #4 GONE, TAKEN OUT WITH NEW ROAD CONSTRUCTION.

#2814

RENEWAL

Monument Set (Procedure and Description)

A DCSO DISK ON AN I.P. SET 7 IN.
BELOW GROUND.

Monument Detail

DOUGLAS COUNTY SURVEYOR

T 29 S

R 7 W S 6

API

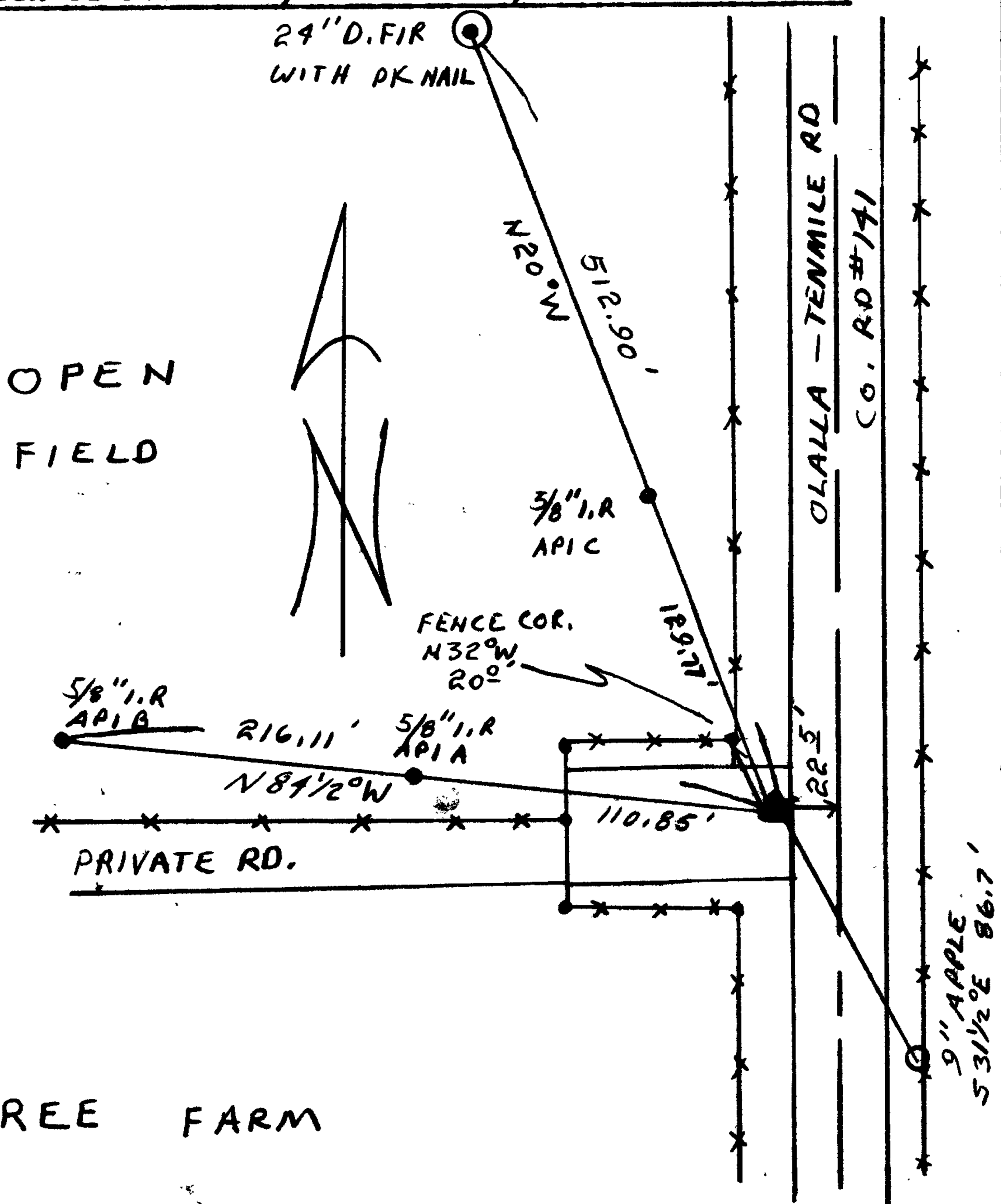
DLC 44

1985

New Accessories

9" APPLE DOUBLE BLAZED AND SCRIBED "X BT"
BEARS S 31 1/2° E 86.7 FT.

Sketch of Monument, Accessories, and General Area



Location & Comments

SEE SKETCH IN C.S. FILE #59/30
TO CLARIFY DISTANCE DISCREPANCIES

Comp. Declin. 18 1/2° E
Agency DCSO
Party Chief RANDALL W SMITH
Notekeeper Randall W Smith
Witnesses STEPHEN J. FLAUSE

Surveyor's Seal

REGISTERED
PROFESSIONAL
LAND SURVEYOR

Larry E. Monrean

OREGON
JULY 13, 1979
LARRY E. MONREAN
#1850

TREE FARM