

GOVERNMENT CORNER RESTORATION FORM

Township 295 Range 6W Sec. 58 County DOUGLAS

State OREGON Date NOV 14, 1985 No. _____

Corner Designation

58	59
517	516

Condition Report Only
 Not Found
 Renewed
 Unrecorded
 Surveyed In
 Referenced Out

Previous Renewals #135, BLM DEPENDENT RESURVEY
 Monument(s) Found: (Condition and Source) 1958

MONUMENT DETAIL

FROM THE 1958 RESURVEY A 3 INCH B.L.M. DISK, MARKED AS AT RIGHT, ON A 2 1/2 INCH O.P. IRON PIPE IS FIRMLY SET AND PROTRUDES 9 INCHES FROM THE GROUND. (THIS MONUMENT LEANS APPROX. 5 INCHES TO THE NORTHWEST OF PLUMB; BECAUSE IT DOES NOT APPEAR TO BE DISTURBED BEARINGS AND DIST. TO ACCESSORIES ARE MEASURED FROM CENTER OF CAP.) AT WEST EDGE OF ABOVE MONUMENT IS A DC50 BRASS CAP MONUMENT, AS DESCRIBED IN RENEWAL #135, WHICH IS FIRMLY SET AND PROTRUDING 10 INCHES ABOVE GROUND. AT WEST EDGE OF DC50 BRASS CAP IS A 3/4 INCH BOLT WITH A 1 1/4 X 1 1/4 INCH SQUARE TOP, NOTED AS FOUND IN RENEWAL #135, FIRMLY SET AND PROTRUDING 3 INCHES ABOVE GROUND. ORIGIN OF BOLT UNKNOWN.

US CADASTRAL SURVEY
 BUREAU OF LAND MANAGEMENT

T295 R6W

58	59
517	516

1958

Accessories Found:

* (RENEWAL #135 NOTES DC50 CAP STAMPED 1957 CAP IS ACTUALLY STAMPED 1954)

ORIGINAL BEARING TREES SEARCHED FOR AND NOT FOUND. FROM 1917 HICKS SURVEY FILED AT DC50 AS M13-71 THREE BEARING TREES FOUND. A 12" R. FIR NOW A 22 INCH DBH DOUGLAS FIR, FALLEN, WITH A CHOPPED OUT ROTTEN BLAZE HAS A ROOT DEPRESSION WHICH BEARS S 75° W, 80 FT. DISTANT (AS PER RECORD). A 12" R. FIR NOW A 24" DBH DOUGLAS FIR WITH A FULLY HEALED SINGLE BLAZE BEARS N 50° E, 12 1/2 FT. DISTANT (AS PER RECORD). A 16" R. FIR NOW A 24 INCH DIAMETER 4 FOOT TALL FIR STUMP, OLD BLAZE OPENED TO REVEAL SCRIBING "R6W" BEARS S 22° E, 17° FT. DISTANT. NO EVIDENCE OF NW BEARING TREE FOUND. HICKS SURVEY STATES HIS CORNER SET FROM ORIG. GOVT. PTS. FROM RENEWAL #135 THREE BEARING TREES FOUND. A 9" R. FIR NOW A 9 INCH DIAMETER 4 FOOT TALL ROTTED FIR STUMP WITH SCRIBING 517 T295 R6W CS BY VISIBLE BEARS S 22° W, 50 1/2 FEET DISTANT (AS PER RECORD). A 12" R. FIR NOW A 2 1/2 FOOT TALL 12 INCH DIAMETER ROTTED FIR STUMP WITH A ROTTEN BLAZE NO SCRIBING VISIBLE, BEARS S 02° W, 31 1/2 FEET DISTANT (AS PER RECORD). A 15" R. FIR NOW A 2 1/2 INCH DBH DOUGLAS FIR WITH A FULLY HEALED DOUBLE BLAZE, BEARS N 70 1/4° E, 32 1/2 FEET DIST. (RECORD N 72° E, 32 1/2 FT.) A ROOT HOLE DEPRESSION IS FOUND NEAR CORRECT BEARING AND DISTANCE FOR NW BEARING TREE, TREE NOT FOUND. TWO BEARING TREES NEW IN BLM 1958 DEPENDENT RESURVEY ARE FOUND A FIR 7 INCH DIAM. NOW AN 13 INCH DBH DOUGLAS FIR WITH A PARTIALLY HEALED SINGLE BLAZE WITH THE SCRIBING 95 R6W S VISIBLE BEARS S 85° E, 58 1/2 FEET DISTANT (AS PER RECORD). AND A FIR 7 INCH DIAM. NOW AN 18 INCH DBH DOUGLAS FIR WITH A FULLY HEALED SINGLE BLAZE BEARS N 67 1/2° W, 43 1/2 FEET DISTANT (RECORD N 67 1/2° W, 44 1/2 FEET DIST.; THIS IS A SLOPE MEASUREMENT).

#258X

RENEWAL

Monument Detail

Monument Set (Procedure and Description)

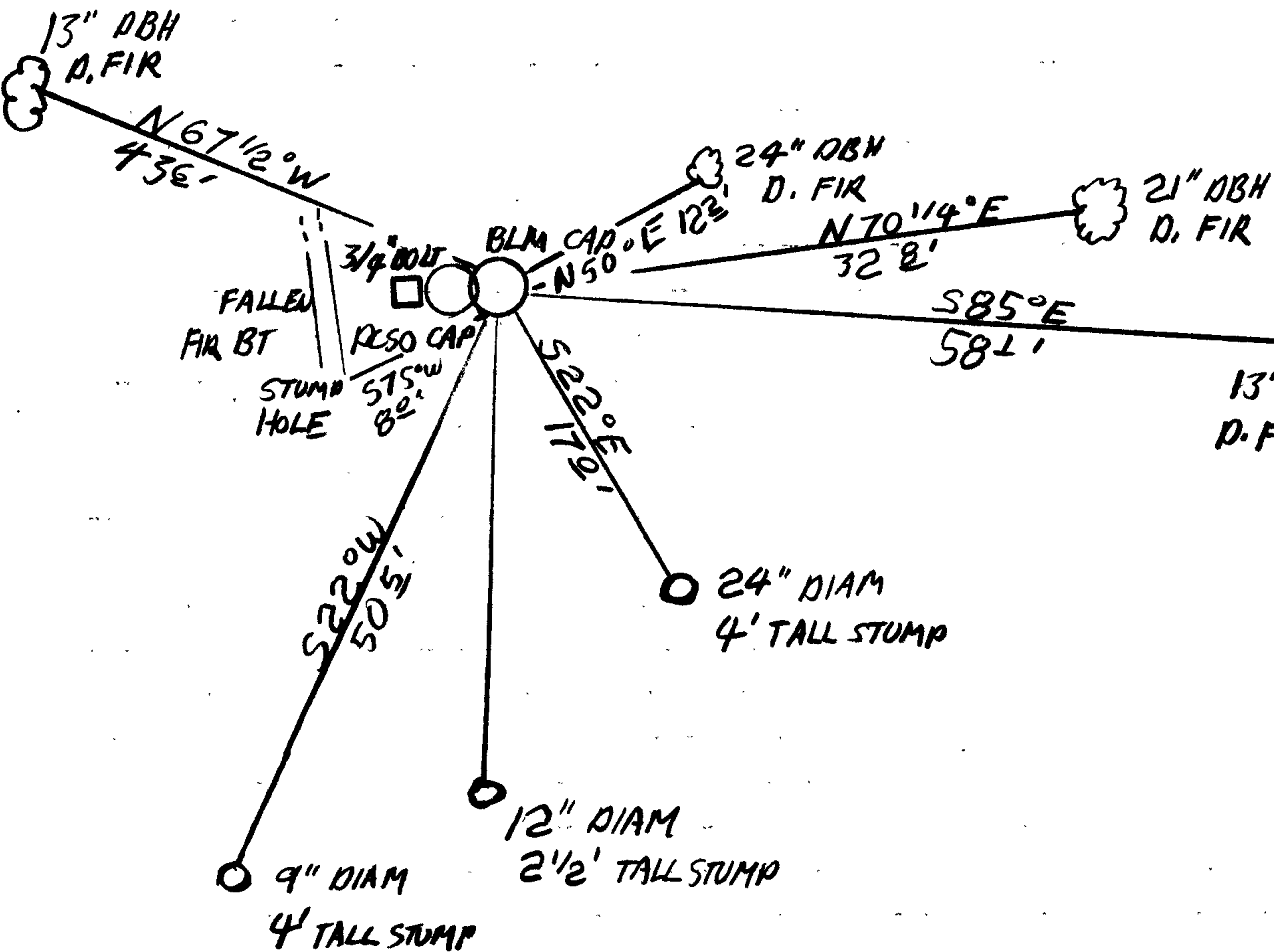
SINCE MONUMENT IS FIRMLY SET AND THE CENTER OF THE BLM BRASS CAP AGREES WITH THE MAJORITY OF THE ACCESSORIES THE MONUMENT POSITION IS ACCEPTED AS IS AND IS NOT RESET TO PLUMB.

N/A

New Accessories

N/A

Sketch of Monument, Accessories, and General Area



Location & Comments

CORNER LIES AT TREE LINE ON NORTH EDGE OF CLEARED PASTURE 200 FEET WEST OF POINT WHERE A JEEP ROAD LEAVES A STAND OF TIMBER AND CLIMBS A CLEARED RIDGE RUNNING SOUTH BY SOUTHWEST.

Comp. Declin. 18 1/2° E
Agency DCSO
Party Chief S.J. FLAUSE
Notekeeper Stephen John Flause
Witnesses R.W. SMITH

Address

Surveyor's Seal

REGISTERED
PROFESSIONAL
LAND SURVEYOR

Handwritten signature of Larry E. Monrean

OREGON
JULY 13, 1979
LARRY E. MONREAN
#1830

DATE: 10-28-81

API
DLC 44

NO ROAD CONSTRUCTION
AS OF 6/83 GP

- Condition Report Only
- Not Found
- Renewed
- Unrecorded
- Surveyed In
- Referenced Out

Previous Renewal #'s 4 AND 1924 RETRACEMENT

Monument(s) Found: (Condition and Source) FROM 1924 SURVEY

AN IRON PIPE WITH A BRASS CAP ATTACHED, CAP

IS STAMPED

API
DLC 44

THIS IS

1924

A GOVERNMENT LAND OFFICE MONUMENT AT INTERSECTION
OF FENCES RUNNING NORTHERLY AND WESTERLY.

Accessories Found: (Condition and Source) 1924 RETRACEMENT BEARING

TREE A 24 NOW 40 INCH DIAMETER D. FIR BEARS N 10 1/2° E

186^B FEET (REQ N 11 3/4° E). TREE IS IN FENCE LINE

ON WESTERLY SIDE OF ROAD, HAS FENCE WIRE GROWN IN,

SEVERAL SCARS AND IS USED FOR GATE POST. NO BLAZE

VISIBLE.

✓ #271 ✗

CS 59/30

Page ___ of C

CS 62/29-12

RENEWAL

Monument Set: (Procedure and Description) _____

New Accessories: (Description) AS THIS CAP IS TO BE DESTROYED
BY ROAD CONSTRUCTION WE REFERENCE POSITION OF MONUMENT
AS INDICATED ON ACCOMPANYING SKETCH, WE REMOVE
BASS CAP MONUMENT.

Location and Comments: 19° EAST Compass Declination
DOUGLAS Co. SURV. OFF Agency
LARRY E. MOURNEAU DEPUTY Party Chief
Larry E. Mourneau Notekeeper
J. E. FLOUFF Witnesses

OK
JEF

T 29 S R 7W SECTION 6

DATE: 10-28-81

AP 1
DLC 44

Condition Report Only
 Not Found
 Renewed
 Unrecorded
 Surveyed In
 Referenced Out

Previous Renewal #'s 4 AND 1924 RETRACEMENT

Monument(s) Found: (Condition and Source) FROM 1924 SURVEY

AN IRON PIPE WITH A BRASS CAP ATTACHED, CAP

IS STAMPED

" AP 1
DLC 44 "

THIS IS

1924

A GOVERNMENT LAND OFFICE MONUMENT AT INTERSECTION
OF FENCES RUNNING NORTHERLY AND WESTERLY.

Accessories Found: (Condition and Source) 1924 RETRACEMENT BEARING

TREE A 24 NOW 40 INCH DIAMETER D. FIR BEARS N 10 1/2° E

186² FEET (REC N 11 3/4° E). TREE IS IN FENCE LINE

ON WESTERLY SIDE OF ROAD, HAS FENCE WIRE GROWN IN,

SEVERAL SCARS AND IS USED FOR GATE POST. NO BLAZE

VISIBLE.

✓ #271 ✓

C 5 62/29-12 Page of C
~~6559/30~~

RENEWAL

Monument Set: (Procedure and Description)

New Accessories: (Description) AS THIS CAP IS TO BE DESTROYED
BY ROAD CONSTRUCTION WE REFERENCE POSITION OF MONUMENT
AS INDICATED ON ACCOMPANYING SKETCH, WE REMOVE
BRASS CAP MONUMENT.

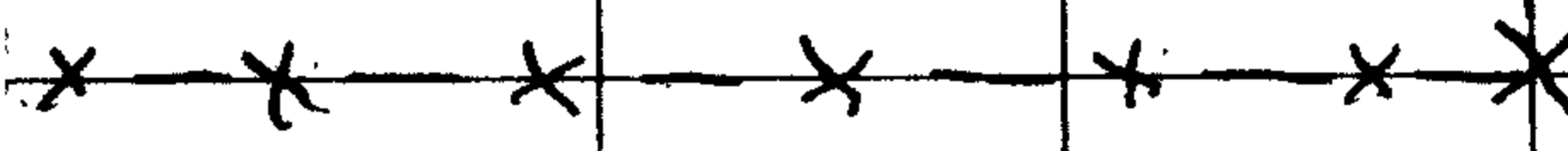
Location and Comments: 19° EAST Compass Declination
DOUGLAS Co. SURV. OFF. Agency
LARRY E. MOUREAU DEPUTY Party Chief
Jerry C. Monahan Notekeeper
T. R. FLOUFF Witnesses

OK
ghl



T 29 S R 2 W

Sec 7 1/2



GENERAL LAND OFFICE SURVEY
 EQUALITY OF REMOVAL.
 #250
 APR 1
 DLCA
 1924

RD # 140

Dirt D/W To Xmas Tree FARM



59/30

No. 312
 "Kity in the Rain"
 WEATHERPROOF
 J. L. DARLING CORP
 TACOMA WASH U.S.A.

County Rd #140

DLC #44

that needs to be referenced

10-22-81

sunny & WARM

70° ±

Nielsen

Hoover

West

US GLO BC

AP 1
DLC44
1929

J. L. DARLING CO.
TACOMA WASH. U.S.

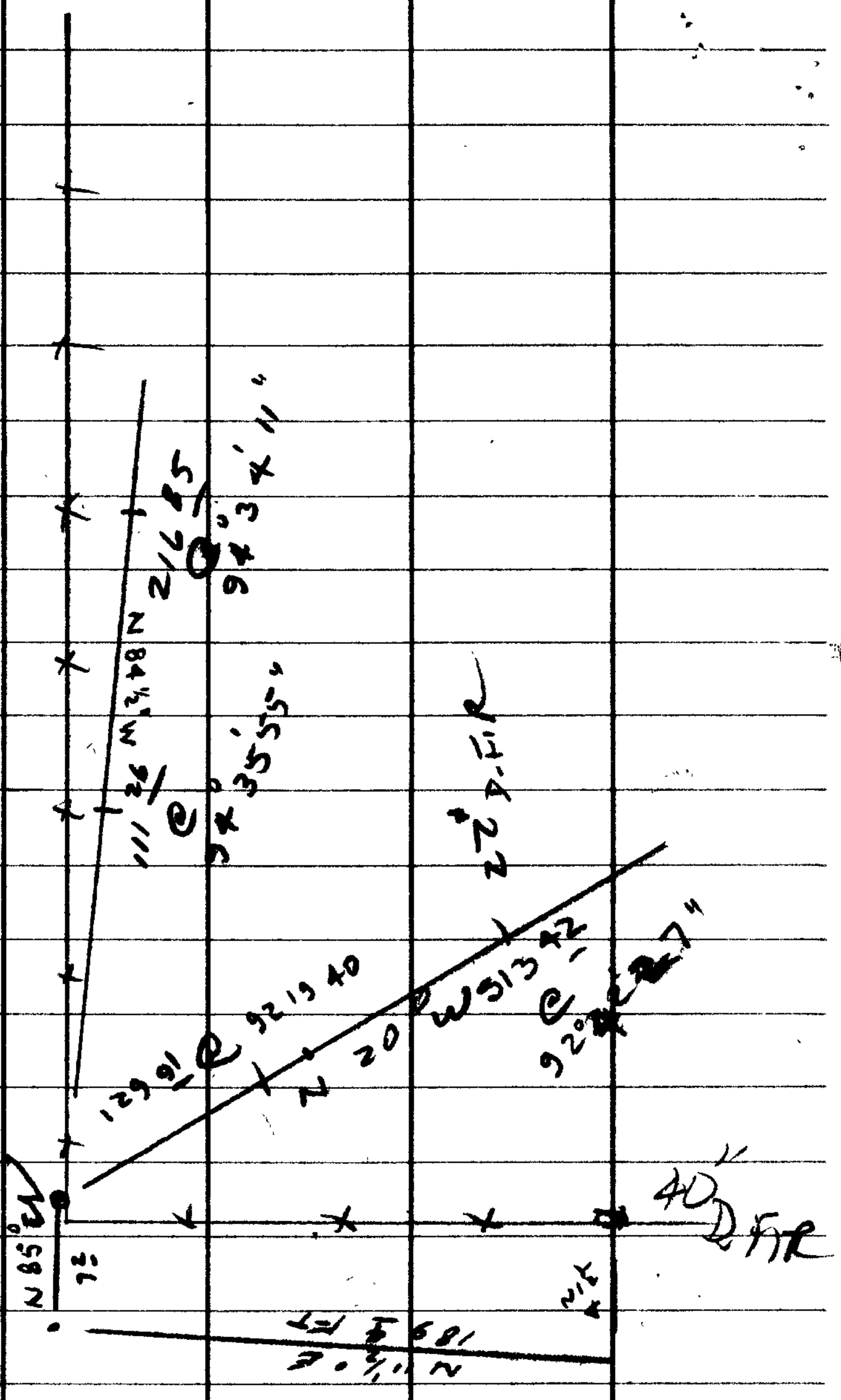
"Rite in the Rain"
WEATHERPROOF

No. 312

59/30

18th

19th

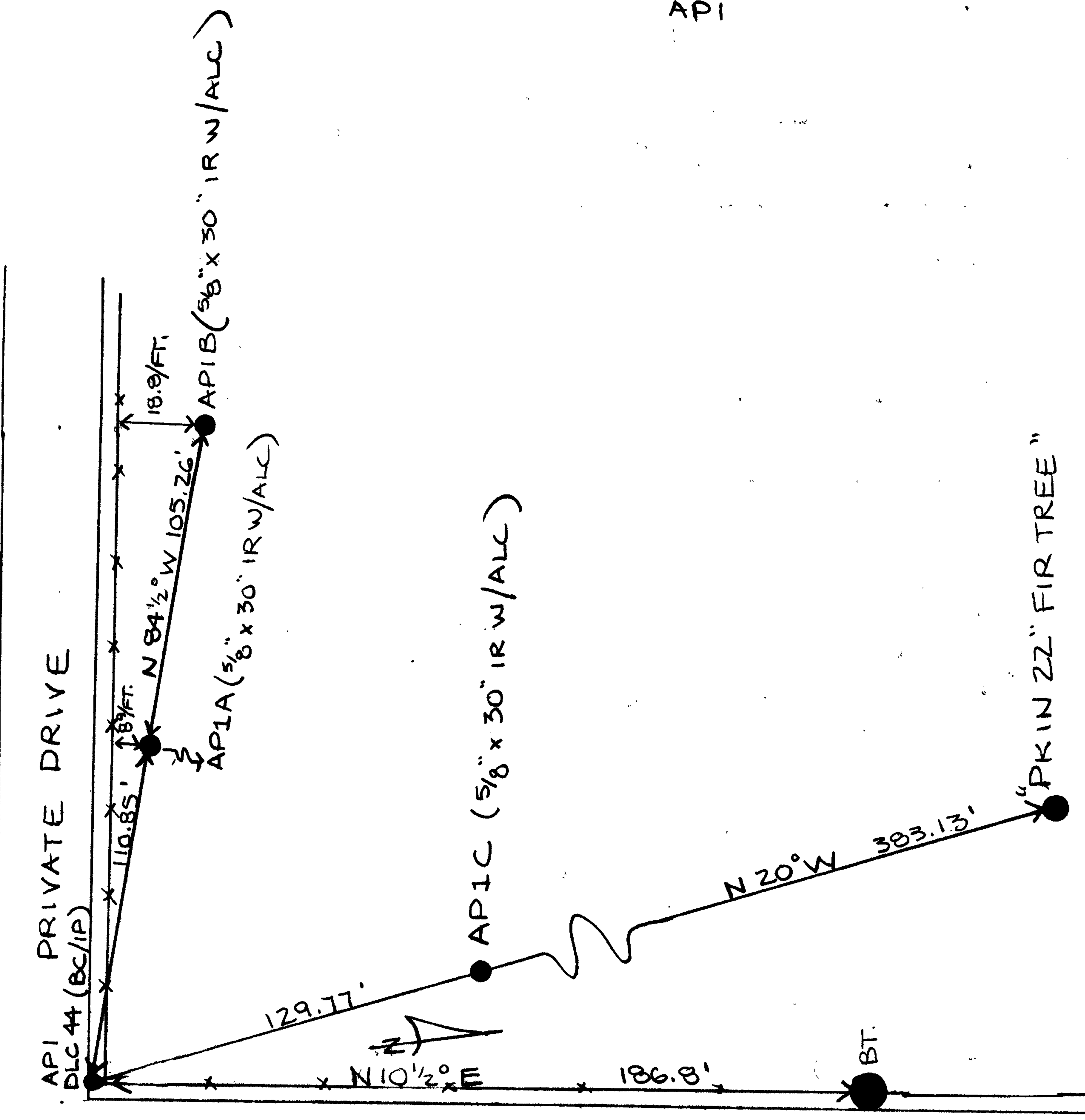


EQUIPMENT USED:
DKM2AE27087B
RED-1 1657
STAFF COMPASS

LEM, TP.
10-28-81

SKETCH FOR CORNER REFERENCE
T29S R7W S6
DLC 44
API

TREE FARM



CO. RD. #141

C S 62/29-...
~~C S 62/30~~