

GOVERNMENT CORNER RESTORATION FORM

Township T26S Range 2W Sec. 10 County DOUGLAS
State OREGON Date OCTOBER 11, 1985 No. _____

RECEIVED
10/14/85

Corner Designation

E 1/16 $\frac{S10}{S15}$

- Condition Report Only
- Not Found
- Renewed
- Unrecorded
- Surveyed In
- Referenced Out

Previous Renewals NONE

MONUMENT DETAIL

Monument(s) Found: (Condition and Source)

A 3 INCH DIAMETER B.L.M. DISK MARKED AS AT LEFT, FIRMLY SET 7 INCHES BELOW GRAVELED ROAD SURFACE NEAR EAST EDGE OF TRAVELED WAY. MONUMENT FROM 1959 DEPENDENT RESURVEY.

U.S. CADASTRAL SURVEY
BUREAU OF LAND MANAGEMENT

E 1/16 $\frac{S10}{S15}$

1959

Accessories Found:

AN ORIGINAL FIR, 9 INS. DIAM. NOW A 16 INCH DIAMETER 6 INCH TALL FIR STUMP WITH EVIDENCE OF A LOW BLAZE WHICH IS OPENED TO REVEAL A FACE AND A SCRIBED "T" BEARS N 37° E, 49 2 FEET DISTANT (RECORD N 42 1/2° E, 49 5 FT. DIST DIFFERENCE IN BEARINGS APPARENT BLUNDER OF ORIGINAL SURVEY)

AN ORIGINAL FIR, 10 INS. DIAM. NOW A 15 INCH D.B.H. D. FIR WITH A FULLY HEALED SINGLE BLAZE, BEARS S 41 1/4° E, 51 5 FEET DISTANT (AS PER RECORD)

RENEWAL

Monument Set (Procedure and Description)

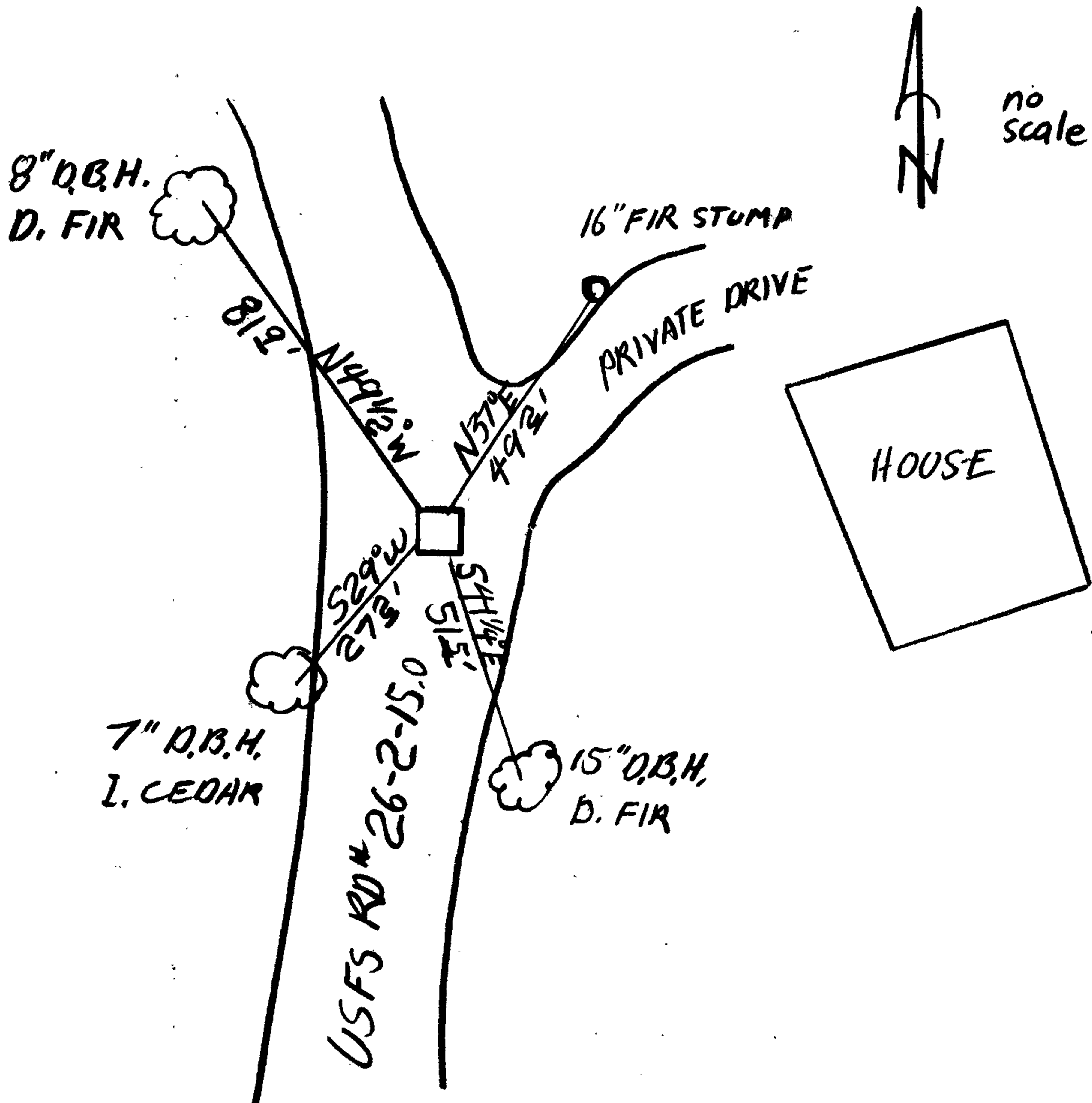
Monument Detail

MONUMENT APPEARS UNDISTURBED
 DESPITE SLIGHT DISTANCE ERROR AND
 APPARENT BEARING BLUNDER TO ORIGINAL
 NORTHEAST BEARING TREE. POSITION OF
 MONUMENT IS ACCEPTED AS FOUND

New Accessories

A BEARING TREE TAG AND BOAT SPIKE ARE SET AT THE NEW RECORD BEARING
 AND DISTANCE IN THE NORTH EAST BEARING TREE STUMP.
 AN 8 INCH D.B.H. DOUGLAS FIR, SCRIBED E 1/16 SIS CS BT ON A DOUBLE
 BLAZE, BEARS N 49 1/2° W, 31 2 FEET DISTANT.
 A 7 INCH D.B.H. INCENSE CEDAR, SCRIBED E 1/16 SIS CS BT ON A
 DOUBLE BLAZE, BEARS S 29° W, 27 2 FT. DISTANT.

Sketch of Monument, Accessories, and General Area



Location & Comments

FROM DIAMOND LAKE HIGHWAY
 (STATE HIGHWAY 138) PROCEED NORTHWEST
 ON USFS RD # 26-2-14, 1+ MILES
 TO JNCT. WITH USFS RD # 26-2-15
 PROCEED NORTHERLY ALONG THIS
 ROAD ≈ .5 MILES TO MONUMENT
 NEAR PRIVATE DRIVEWAY & HOUSE.

Comp. Declin. 18 1/2° E
 Agency DCSO
 Party Chief S.J. FLAUSE
 Notekeeper Stephen John Flause
 Witnesses I.R.W. SMITH

Surveyor's Seal

REGISTERED
 PROFESSIONAL
 LAND SURVEYOR

Larry E. Monrean

OREGON
 JULY 13, 1979
 LARRY E. MONREAN
 #1830

Rm. 122 - COURTHOUSE
ROSEBURG, OR 97470

DOUGLAS COUNTY SURVEYOR

PH. 672-3311
EXT. 114

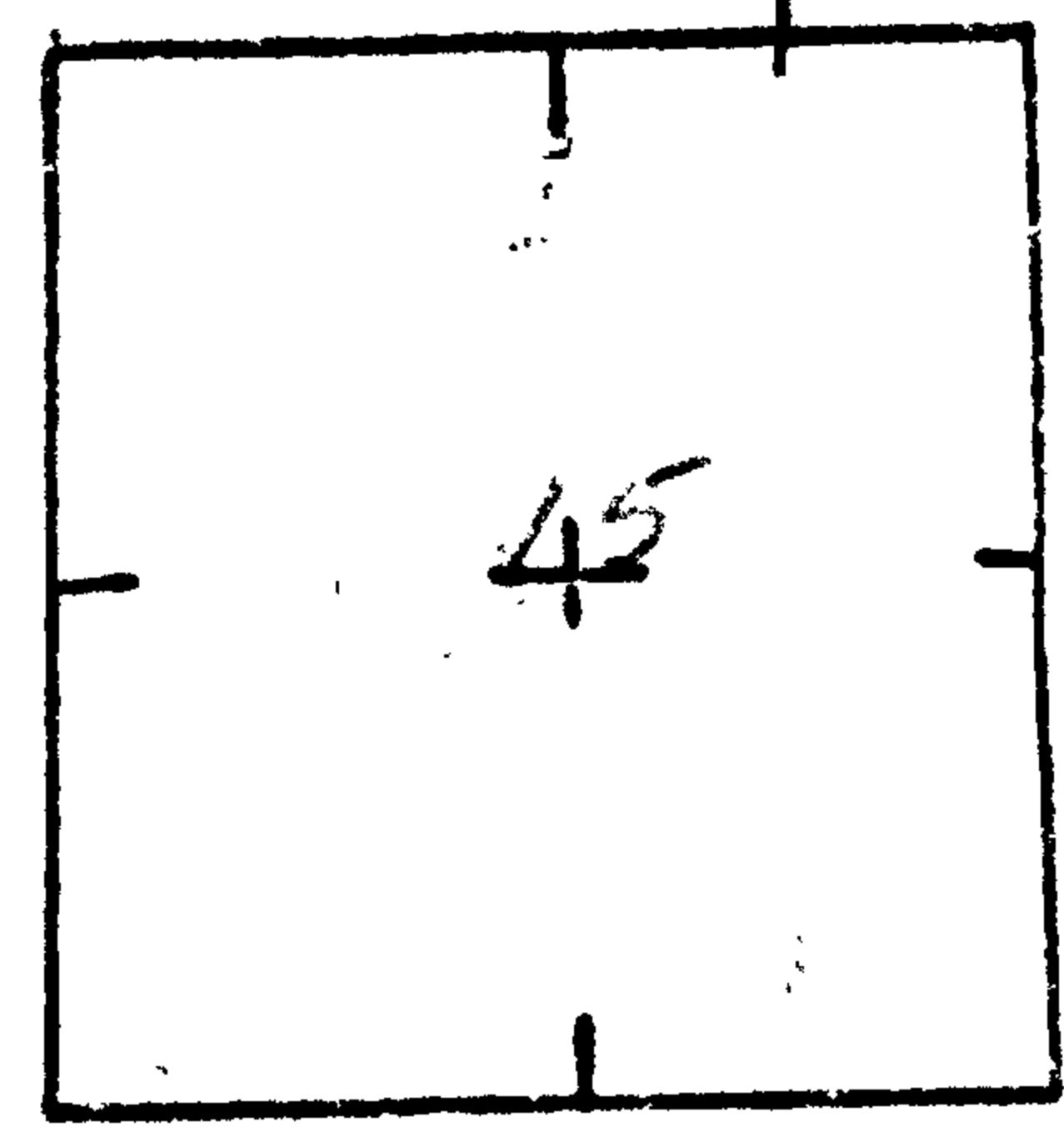
CORNER RENEWAL REQUEST

Section 15 Twp. 26S Rge. 2W

Date 9-18-85

File No. 62/29-6

Condition of Corner and Accessories: See the original notes of Irving Ziepel (1959) pg 15. He placed it in the road bed. I did not dig for the corner. Please note that the BT in the NE Quad is gone (its location is in the driveway to the house nearby). Therefore, there is only one BT left. Please mark some new BT's and watch out for the DOGS @ the house nearby. This is very easy access and a nice drive. See sketch on back.



TO REACH: (Please show approximate distances, clearcuts, roads, fences, etc.) See Sketch

Bill May
BLM

Notify immediately prior to renewal visit? Yes No
Notify following renewal visit? Yes No
Is corner in immediate danger of being lost or disturbed? Yes No

Name _____
Address 777 NW Garden Valley Blvd.
Telephone 672-4491-267

ADDITIONAL COMMENTS

C.S. File No. 62/29

NORTH WEST 1/4 MILES ON 26-2-14

NORTH 1/2 MILE 26-2-15

