

GOVERNMENT CORNER RESTORATION FORM

Township 23 S Range 7 W Sec. 2 County DOUGLAS

State OREGON Date 12-16-85 No. _____

Corner Designation

C.C. $\frac{52}{511}$

- Condition Report Only
- Not Found
- Renewed
- Unrecorded
- Surveyed In
- Referenced Out

Previous Renewals # 93 SEE CS 42/350

Monument(s) Found: (Condition and Source)
FROM RENEWAL # 93 A "T" IRON SET BY
HAINES PROTRUDES 20 INCHES ABOVE GROUND.

N/A

FOUND EVIDENCE OF FIR TREE 1 FOOT
WEST OF T IRON. A DEPRESSION AND
FRAGMENTARY PIECES OF WOOD WERE
LOCATED. TREE SIZE INDETERMINABLE.

PER HAINES RENEWAL # 93 T IRON IS
1 FOOT EAST OF CORNER TREE.

Accessories Found:

FOUND FRAGMENTARY ~~PIECE~~ REMAINS OF STUMP N 30° E 12 ⁸/₁₆ FEET (ORIG REC. 10 LKS)
SIZE INDETERMINABLE, NO SCRIBING OR GLAZE FOUND.

FOUND DEPRESSION IN GROUND S 70° E 11 ³/₁₆ FEET (ORIG. REC. S 20° E 14 LINKS)

DID NOT FIND MONUMENT SET BY PHILLIPS (CS 42/350) AT N 75° W
64 ²/₁₆ FEET. (SEE REN. # 93)

MONUMENT DETAIL

#165 ✓

RENEWAL

Monument Set (Procedure and Description)

AT A POINT 1⁰ FEET WEST OF HAINES MONUMENT AND
 SITUATED IN DEPRESSION OF APPARENT CORNER TREE
 SET 1" X 30" IRON PIPE WITH ATTACHED BRASS
 CAP. CAP IS MARKED AS NOTED.

Monument Detail

DOUGLAS COUNTY SURVEYOR
 T 23 S

C. C. 152
 1511

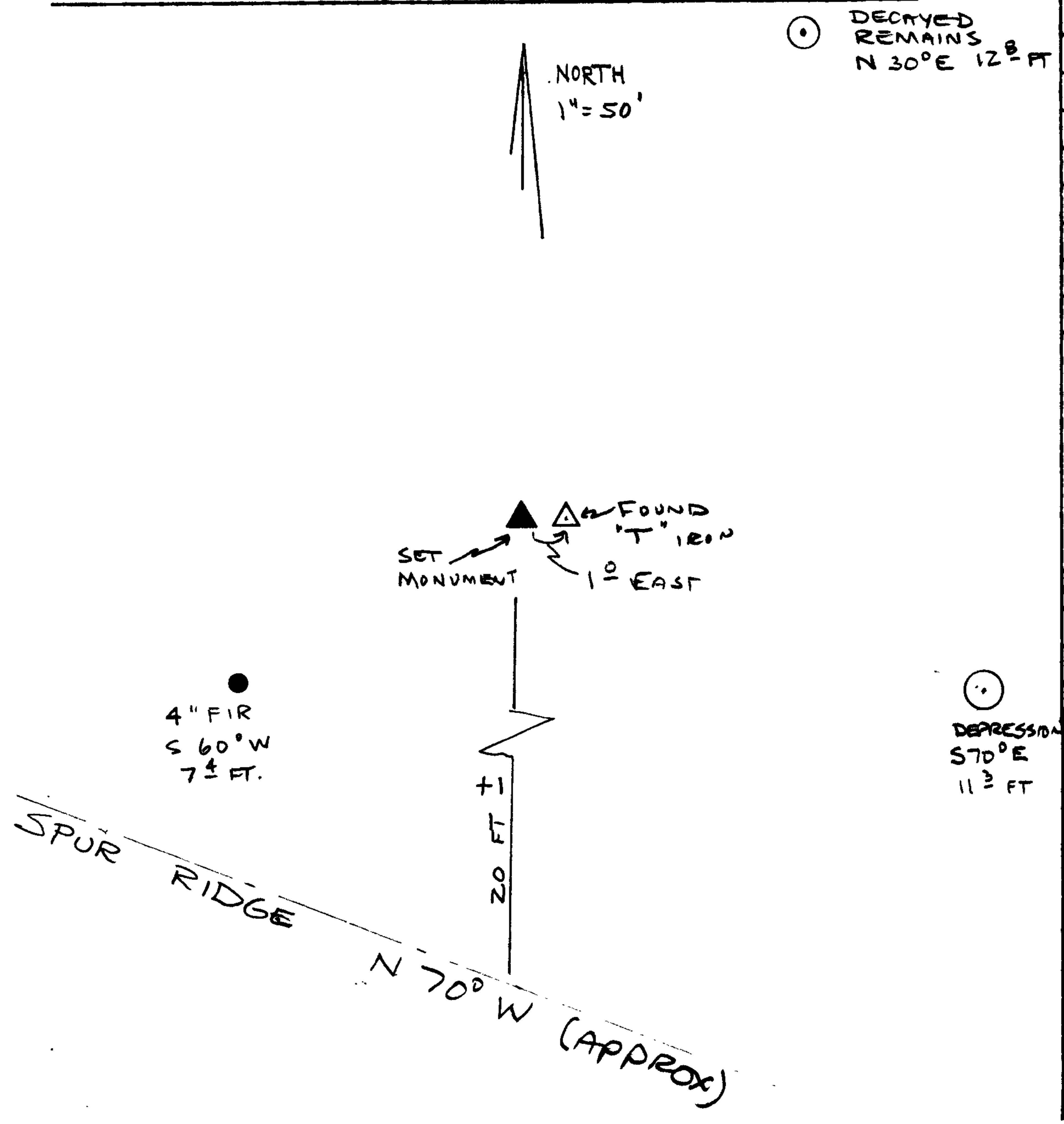
R 7 W

1985

New Accessories

4" FIR DOUBLE BLAZED & SCRIBED "X BT" BEARS S 60° W 7 ± FEET.

Sketch of Monument, Accessories, and General Area



Location & Comments

20' ± NORTH OF ^{SPUR} RIDGE RUNNING
 N 70° W

Comp. Declin. 19° EAST
 Agency DOUGLAS COUNTY SURVEYORS OFFICE
 Party Chief LARRY E. MONREAN
 Notekeeper " " "
 Witnesses R. W. SMITH DCSO
 Bill MCAURTER U.S. NAT. BANK
 ROGER FEARN "

Address

Surveyor's Seal

REGISTERED
 PROFESSIONAL
 LAND SURVEYOR

Larry E. Monrean

OREGON
 JULY 13, 1979
 LARRY E. MONREAN
 #1830