

GOVERNMENT CORNER RESTORATION FORM

Township 27 S Range 6 W Sec. 12 County DOUGLAS

State OR Date 4/10/85 No. _____

Corner Designation

S.W. COR. D.L.C. No. 39

- Condition Report Only
- Not Found
- Renewed
- Unrecorded
- Surveyed In
- Referenced Out

Previous Renewals 28

Monument(s) Found: (Condition and Source)

FOUND 4" TIP OF PLOWSHARE PROTRUDING
1/2" ABOVE GROUND

Accessories Found:

RIGHT CORNER OF LOWER STEP OF HOUSE BEARS S 4 1/2° W 69.2 FT.

RAILROAD SPIKE IN ASPHALT (M14-25 & M90-61) BEARS N 89° E
30.0 FT

NOTCH IN CURB SOUTH 8.7 FT.

MONUMENT DETAIL

~~364~~

#174X

RENEWAL

Monument Set (Procedure and Description)

Monument Detail

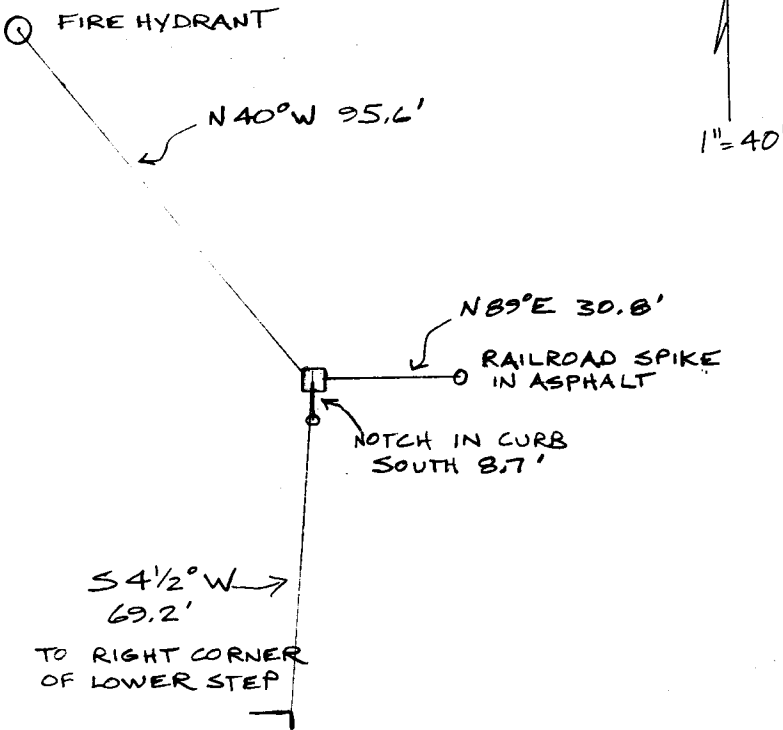
NOTHING SET - PLOWSHARE IS FIRM

4"
1/2" ABOVE GROUND

New Accessories

TOP OF FIRE HYDRANT BEARS N 40° W 95.6 FT

Sketch of Monument, Accessories, and General Area



Location & Comments

Comp. Declin. 18 1/2° E
 Agency DOUGLAS CO. SURVEYOR
 Party Chief JRL
 Notekeeper JRL
 Witnesses SJF

Surveyor's Seal

REGISTERED
PROFESSIONAL
LAND SURVEYOR

Larry E. Monrean

OREGON
JULY 13, 1979
LARRY E. MONREAN
#1830