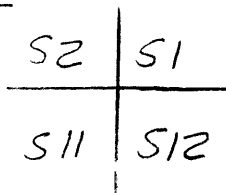


GOVERNMENT CORNER RESTORATION FORM

Township 31S Range 1E Sec. 1 County DOUGLAS

State OREGON Date JULY 10, 1985 No. _____

Corner Designation



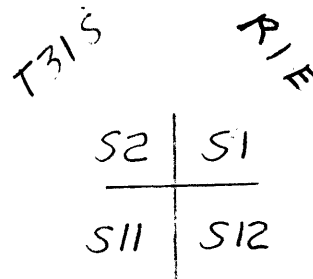
- Condition Report Only
- Not Found
- Renewed
- Unrecorded
- Surveyed In
- Referenced Out

Previous Renewals

Monument(s) Found: (Condition and Source)

A 2 1/2 INCH DIAMETER G. L. DISK (MARKED AS NOTED AT RIGHT) ON A 2 INCH DIAMETER GALVANIZED IRON PIPE FIRMLY SET AND PROJECTING 8 INCHES FROM GROUND.

U.S. GENERAL LAND OFFICE



1936

Accessories Found:

FOUR ORIGINAL BEARING TREES:

- A WHITE FIR, 9 INS. DIAM. NOW AN 18 INCH D.B.H. NOBLE FIR WITH A FULLY HEALED SINGLE BLAZE BEARS N03°E, 80 9 FEET DISTANT (RECORD N3°E, 83 2 FT. DIST. (THIS IS A SLOPE DISTANCE))
- A FIR, 10 INS. DIAM. NOW AN 16 INCH D.B.H. NOBLE FIR WITH A FULLY HEALED SINGLE BLAZE BEARS S78°E, 25 1 FEET DISTANT (AS PER RECORD)
- A FIR, 37 INS. DIAM. NOW A 47 INCH D.B.H. NOBLE FIR WITH A FULLY HEALED SINGLE BLAZE BEARS S43°W, 101 2 FEET DISTANT (RECORD S43°W, 101 6 FT. DIST. (THIS IS A SLOPE DISTANCE))
- A FIR 7 INS. DIAM. NOW AN 18 INCH DIAMETER 2 FOOT HIGH SHATTERED AND ROTTED FIR STUMP WITH EVIDENCE OF A BLAZE BUT NO MARKING BEARS N87°W, 46 9 FEET DISTANT (AS PER RECORD)

G.S. File No. 62/28-14

RENEWAL

Monument Set (Procedure and Description)

Monument Detail

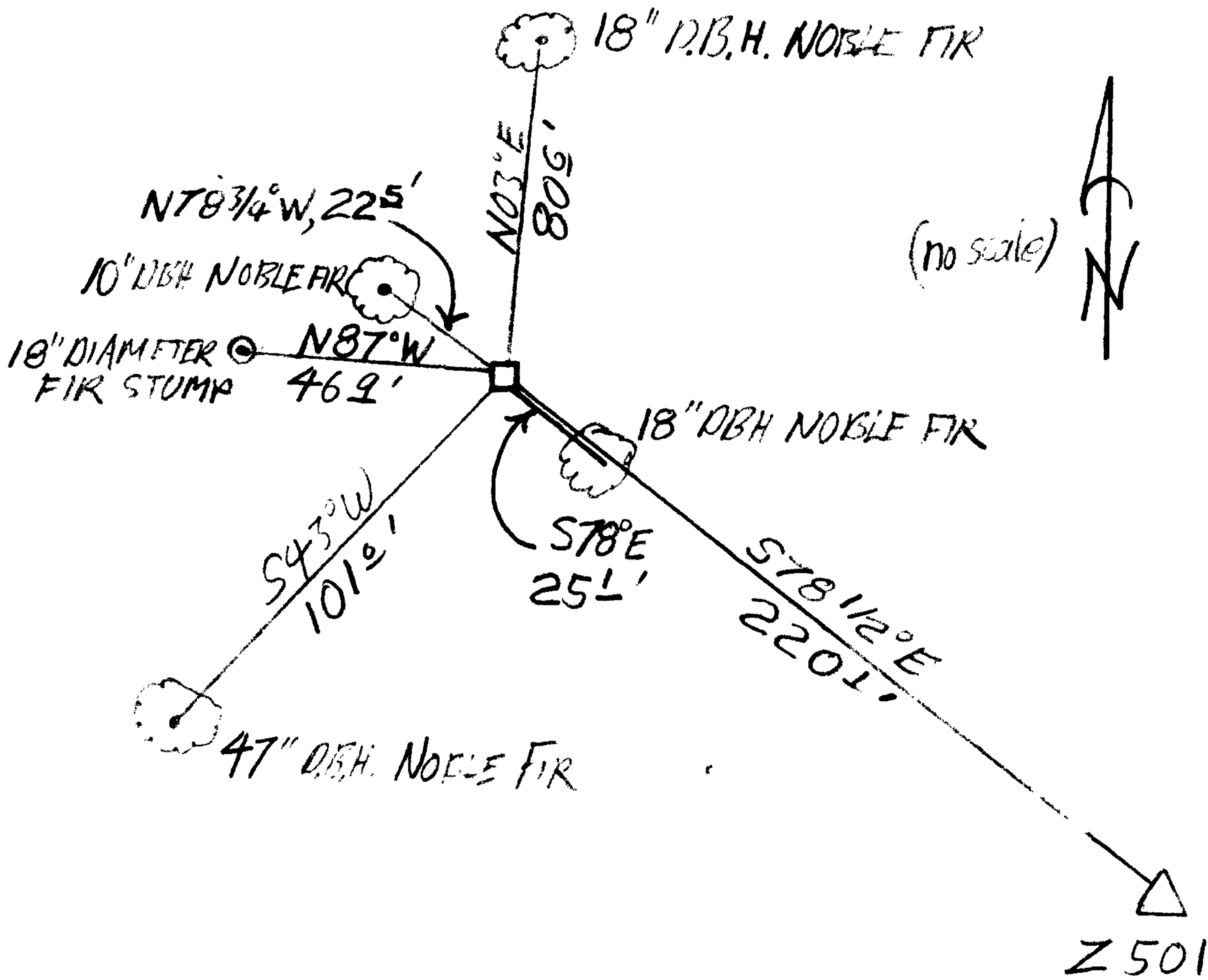
MONUMENT POSITION ACCEPTED. MONUMENT DOES NOT APPEAR DISTURBED AND DISTANCES TO SE AND NW BEARING TREES, WHICH ARE READILY MEASURED LEVEL, MATCH ORIGINAL RECORD.

New Accessories

A 10 INCH DBH NOBLE FIR SCRIBED T31S R1E S2 CS BT ON A DOUBLE BLAZE BEARS N $78^{\circ}34'W$, 225 FEET DISTANT.

A U.S.C. & G.S. BENCHMARK WHICH IS A DISK STAMPED Z 501 1949 SET IN A CONCRETE POST 1 FOOT IN DIAMETER AND PROTRUDING 3 INCHES ABOVE GROUND BEARS S $78^{\circ}12'E$, 220 FEET DISTANT.

Sketch of Monument, Accessories, and General Area



Location & Comments

CORNER IS LOCATED NEAR TOPEKA DIVIDE APPROX. 2 MILES WEST FROM HUCKLEBERRY LAKE.

Comp. Declin. $18^{\circ}12'E$
Agency DCSO
Party Chief STEPHEN JOHN FLAISE
Notekeeper RANDY SMITH
Witnesses John Flaise

Surveyor's Seal

REGISTERED
PROFESSIONAL
LAND SURVEYOR

Larry E. Monrean

OREGON
JULY 13, 1979
LARRY E. MONREAN
#1830