

GOVERNMENT CORNER RESTORATION FORM

Township 31S Range 1E Sec. 2 County DOUGLAS

State OREGON Date 7/1/85 No. _____

Corner Designation

$\frac{1}{4} \frac{S2}{S11}$

- Condition Report Only
- Not Found
- Renewed
- Unrecorded
- Surveyed In
- Referenced Out

Previous Renewals NONE

MONUMENT DETAIL

Monument(s) Found: (Condition and Source)
A US GENERAL LAND OFFICE SURVEY
DISK ON A 1" I.P. BENT
NORTHERY, UNDER DOWNED ORIG.
NE BRG. TREE, MARKED AS
NOTED.

US GENERAL LAND OFFICE SURVEY

$\frac{1}{4} \frac{S2}{S11}$
1936

Accessories Found:

22" NOW 27" DIA. W. FIR WITH A SINGLE FULLY HEALED BLAZE
BEARS S10°W, 71.3 FT AGREES WITH REC. (ORIG.)

37" NOW DOWN AND BADLY ROTTED FIR NO SCRIBING FOUND
A DEPRESSION WITH ROOTS PRESENT BEARS N59°E, 11.9 FT AGREES WITH REC. (ORIG.)

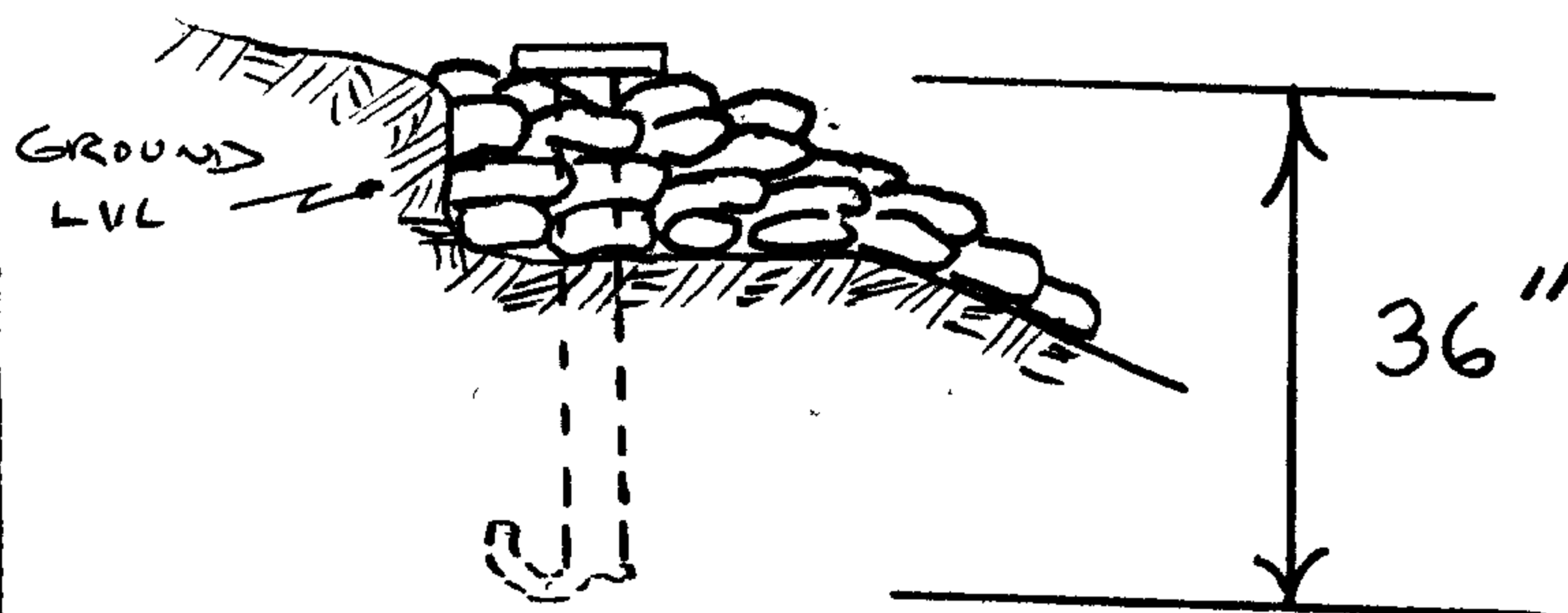
#4 ✓

RENEWAL

Monument Set (Procedure and Description)

MONUMENT WAS DUG OUT AND ORIG. POSITION REFERENCED, MONUMENT WAS STRAIGHTENED AND RETURNED TO ORIGINAL PLUMB POSITION. MONUMENT PROTRUDES 1 IN ABOVE A 3 FT MOUND OF STONE SET AROUND I.P.

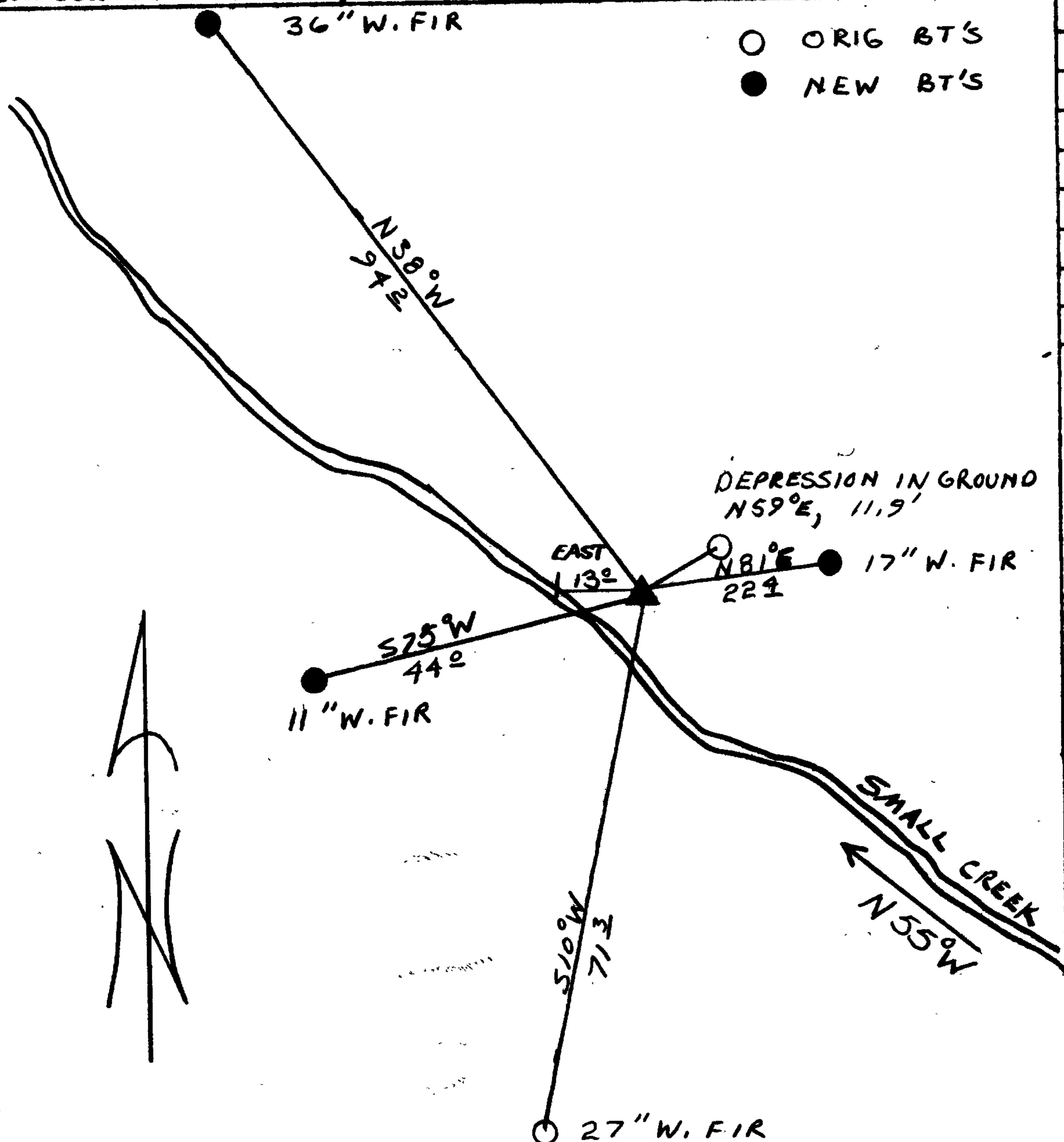
Monument Detail



New Accessories

- 11" W. FIR DOUBLE BLAZED AND SCRIBED "Y4 S11 CS BT" BEARS S75°W, 44.2 FT.
- 36" W. FIR. DOUBLE BLAZED AND SCRIBED "Y4 S2 CS BT" BEARS N38°W, 94.2 FT.
- 17" W. FIR DOUBLE BLAZED AND SCRIBED "Y4 S2 CS BT" BEARS N81°E 22.4 FT TO ROOT CROWN. TREE LEANS NW

Sketch of Monument, Accessories, and General Area



Location & Comments

CORNER LIES NEAR BOTTOM OF RAVINE APPROX. 250 FT NORTH OF ROAD. (USES 2925-700)

Comp. Declin. 18 1/2° E
 Agency DCSO
 Party Chief RANDALL W. SMITH
 Notekeeper [Signature]
 Witnesses STEPHEN J. FLAUSE

OK [Signature] Surveyor's Seal

REGISTERED PROFESSIONAL LAND SURVEYOR

[Signature]

OREGON
 JULY 13, 1979
 LARRY E. MONREAN
 #1830