

R

GOVERNMENT CORNER RESTORATION FORM

Township 23 S Range 4 W Sec. 21 County DOUGLAS

State OREGON Date 6/27/85 No. _____

Corner Designation

S17	S16
S20	S21

- _____ Condition Report Only
- _____ Not Found
- Renewed
- _____ Unrecorded
- _____ Surveyed In
- _____ Referenced Out

Previous Renewals # 26, 1976 DEPENDENT RESURVEY

Monument(s) Found: (Condition and Source)

A BLM BRASS CAP ON A 2 INCH IRON PIPE
PROTRUDING 2 INCHES FROM GROUND AND
LEANING 11 INCHES WEST, MARKED AS AT RIGHT

U.S. DEPT. OF THE INTERIOR, BUR. OF
LAND MANAGEMENT

T235 R4W

S17	S16
S20	S21

1976

Accessories Found:

NO EVIDENCE OF ORIGINAL B.T.S. FOUND.
(BASE OF MONUMENT UNCOVERED AND PLUMB POSITION DETERMINED, BEARING AND DISTANCES
CHECKED FROM PLUMB POSITION)

FROM RENEWAL # 26 HAINES T-IRON (TOP OF PIN BENT 7 INCHES
SW MEASUREMENTS TAKEN TO PLUMB BASE) BEARS S52°E, 8.6 FT
DIST (AS PER RECORD). MEASURING FROM T-IRON, THREE HAINES BEARING
TREES ARE FOUND. A 22 INCH FIR, NOW A 34 INCH D.B.H. D. FIR
BEARS S22°E 33.4 FT DIST. (HAINES RECORD); TREE HAS EVIDENCE
OF LOWER BLAZE AND LARGE CHOPPED OUT UPPER BLAZE.
A 10 INCH CEDAR, NOW A 16 INCH D.B.H. T. CEDAR WITH A PARTIALLY
HEALED DOUBLE BLAZE SHOWING FRAGMENTARY SCRIBING AND A HAINES BT
WASHER ON LOWER BLAZE, STAMPED WILFORD HAINES, 239 SURVEY POINT,
BEARS N73°W 58.5 FT DIST. (HAINES RECORD). AN 8 INCH D. FIR NOW
AN 18 INCH D.B.H. D. FIR WITH A FULLY HEALED DOUBLE BLAZE, BEARS
S54°W 70.0 FT DIST. (HAINES RECORD).

ALSO FROM 1976 DEPENDENT RESURVEY TWO BEARING TREES AS MEASURED
FROM B.C. MONUMENT. A MADRONE 8 INS DIAM. NOW A 7 INCH D.B.H.
MADRONE BARK SCRIBEN T235 R4W S16 BT BEARS N76 3/4°E,
31 1/2 FT. DIST. (RECORD N75°E, 55 1/4 FT. DIST.) AND A FIR 7 INS. DIAM.
NOW A 9 INCH D.B.H. D. FIR WITH A FULLY HEALED DOUBLE BLAZE
BEARS S76°E, 39 1/2 FT. DIST. (RECORD S74 1/4°E, 39 1/2 FT. DIST.; THIS
DISTANCE IS LEVEL DISTANCE FROM CAP TO CENTER OF TREE TRUNK
APPROX. 6 FT. ABOVE GROUND)

T235-1 #175

RENEWAL

Monument Set (Procedure and Description)

Monument Detail

BECAUSE OF REASONABLE AGREEMENT WITH RECORD BOTH MONUMENTS ARE RESTORED TO PLUMB POSITION.
 BLM MONUMENT NOW FIRMLY SET AND PROTRUDES 4 INCHES FROM GROUND.
 HAINES T-IRON ACCESSORY TO ABOVE MON. NOW FIRMLY SET AND PROTRUDING 1 INCH ABOVE GROUND.

NA

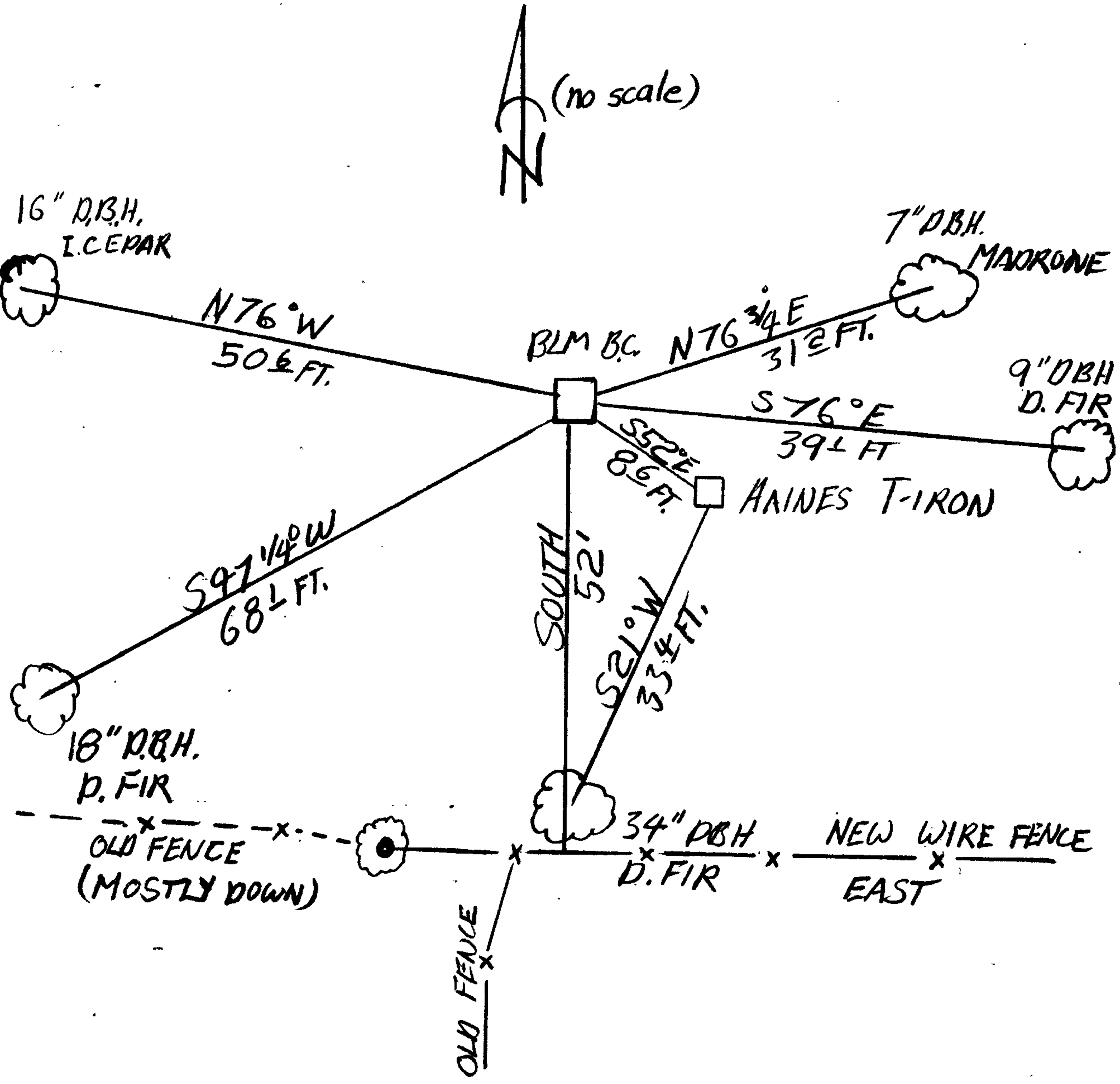
New Accessories

HAINES NW AND SW BEARING TREES HAVE BLAZES VERY CLOSELY FACING BLM BRASS CAP; THESE ARE NOW MEASURED AND RECORDED AS NEW ACCESSORIES TO BLM BRASS CAP.
 AN 18 INCH DBH. D. FIR WITH A FULLY HEALED DOUBLE BLAZE BEARS S 47 1/4 W, 68 1/2 FT. DIST.
 A 16 INCH D.B.H. L. CEDAR WITH A PARTIALLY HEALED DOUBLE BLAZE SHOWING FRAGMENTARY SCRIBING AND A HAINES BT WASHER ON THE LOWER BLAZE, STAMPED WILFORD HAINES, 239, SURVEY POINT; BEARS N 76 W, 50 1/2 FT. DIST.
 Sketch of Monument, Accessories, and General Area

Location & Comments

CORNER IS 50+ FT. NORTH BEYOND NORTH WEST CORNER OF SMALL CLEARING AND ON A GENTLE EAST SLOPE.
 A NEW WIRE FENCE RUNNING EAST IS 52 FT SOUTH OF BLM MONUMENT.

Comp. Declin. 18 1/2 E
 Agency DLCSO
 Party Chief STEPHEN JOHN FLAISE
 Notekeeper ~~Stephen John Flaise~~
 Witnesses R.W. SMITH



OK [Signature]

Surveyor's Seal

REGISTERED
 PROFESSIONAL
 LAND SURVEYOR

[Signature]

OREGON
 JULY 13, 1979
 LARRY E. MONREAN
 #1830