

GOVERNMENT CORNER RESTORATION FORM

Township 29S Range 2W Sec. 31 County DOUGLAS

State OR Date 6/24/85 No. _____

Corner Designation

1/4 S 31

- _____ Condition Report Only
- _____ Not Found
- Renewed
- _____ Unrecorded
- _____ Surveyed In
- _____ Referenced Out

Previous Renewals #34 T29-2
#126-T30-2, 1971 DEP. RESURVEY

MONUMENT DETAIL

Monument(s) Found: (Condition and Source)

A US GENERAL LAND OFFICE BRASS
CAP ON A I.P. PROTRUDING 14 IN.
ABOVE GROUND. MARKED AS NOTED

US GENERAL LAND OFFICE SURVEY

1/4 S 31
1917

Accessories Found:

20" NOWA 22" DIA. D. FIR TIPPED OUT WITH COVERED FACE
CENTER OF ROOT HOLE BEARS N 8 1/2° E, 12.5 FT. (AGREES WITH ORIG.)

30" NOWA 38" DIA. D. FIR WITH A WELL HEALED SINGLE BLAZE
BEARS N 32 1/2° W, 12.8 FT (AGREES WITH ORIG.)

20" NOWA 29" DIA. D. FIR WITH A WELL HEALED SINGLE BLAZE
BEARS N 30° E, 25.1 FT. (AGREES WITH REN #126)

T.29-2 #119 ✓
T.30-2 #257 ✓

C.S. File No. 62/28-8

RENEWAL

Monument Set (Procedure and Description)

Monument Detail

N/A

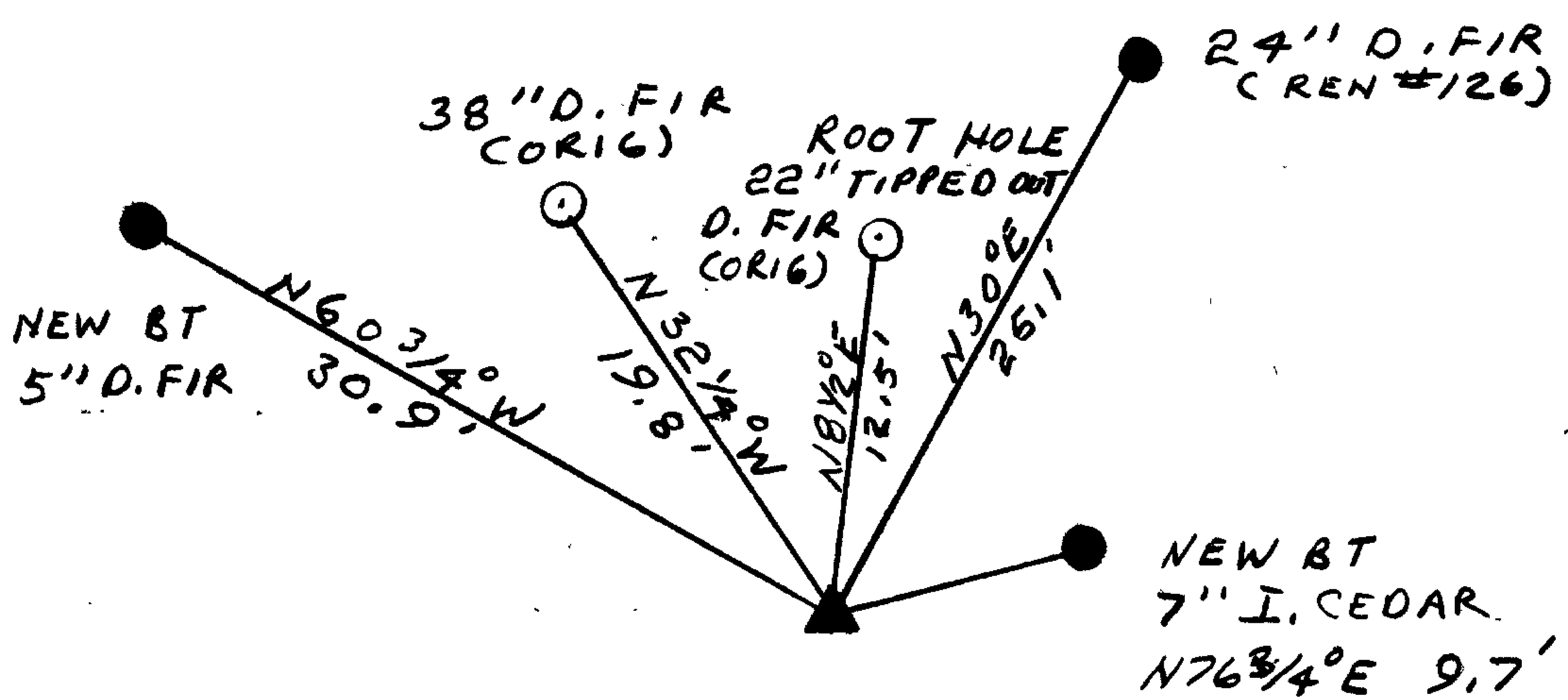
N/A

New Accessories

7" I. CEDAR DOUBLE BLAZED AND SCRIBED " 1/4 S31 CS BT"
BEARS N76 3/4° E, 9.7 FT.

5" D. FIR DOUBLE BLAZED AND SCRIBED " 1/4 S31 CS BT"
BEARS N60 3/4° W, 30.9 FT.

Sketch of Monument, Accessories, and General Area



Location & Comments

CORNER IS S89°50'26"W
89.18 FT FROM NY4 COR
SEC 6 T30S R2W PER M97-65

Comp. Declin. 18 1/2° E
Agency DCSD
Party Chief RANDALL W SMITH
Notekeeper STEPHEN J FLAUSE
Witnesses STEPHEN J FLAUSE

Surveyor's Seal
REGISTERED
PROFESSIONAL
LAND SURVEYOR

Larry E. Monrean

OREGON
JULY 13, 1979
LARRY E. MONREAN
#1830