

RECEIVED  
 DEC 16 1985  
 COUNTY SURVEYOR  
 DOUGLAS COUNTY, ORE

OREGON CORNER RESTORATION FORM

Section 28 Township 29S Range 1W

County DOUGLAS Date NOV. 25, 1985

Corner Designation

C-E-E-SE 1/256 CORNER OF SECTION 28

- Condition Report Only
- Not Found
- Renewed
- Unrecorded
- Surveyed In
- Referenced Out

Previous Renewals/Surveys, etc. M 70-44A

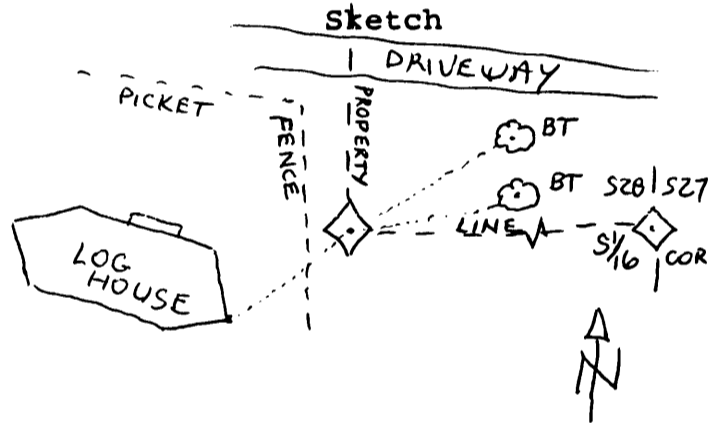
Monument(s) & Accessories Found: (Condition and Source)

2 1/4" OUTSIDE DIAMETER IRON PIPE, FIRMLY SET, 4" BELOW A 2 FT. DIAMETER MOUND OF STONE, SET BY WAYNE ROGERS, L.S. 1004, IN 1978, WITH BRASS CAP ATTACHED AND MARKED AS SHOWN; AND BTS BY ROGERS IN 1978:

A) 16" P. PINE, N58 1/2° E, 54° FT. (REC. N48° E, 53.2 FT.) WITH SCRIBE MARKS VISIBLE ON PARTIALLY HEALED DOUBLE BLAZE.

A) 16" P. PINE, N75 1/2° E, 44° FT. (REC. N68° E) WITH SCRIBE MARKS VISIBLE ON PARTIALLY HEALED DOUBLE BLAZE.

Monument Detail



Monument Set (Procedures and Description)

NONE

New Accessories

NONE

Location & Comments

SE CORNER OF LOG HOUSE Compass Declination 18 3/4° E  
IS 532 1/2" NW 35 FT. PICKET FENCE, RUNNING NORTH-SOUTH,  
IS 47 FT. WEST. Address 2900 STEWART

NOTE THE NEW BT BEARINGS. BASIS OF BEARINGS WAS FROM M 70-44A Party Chief LEONARD HERZSTEIN  
N58 1/2° E TO S 1/16 CORNER OF S27 AND S28. Witness RANDY LOPEZ

Surveyor's Seal



Dec 11, 1985