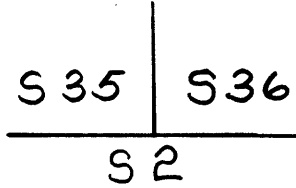


GOVERNMENT CORNER RESTORATION FORM

Township 27S Range 7W Sec. 35 County DOUGLAS

State OR Date 4/18/85 No. _____

Corner Designation



- Condition Report Only
- Not Found
- Renewed
- Unrecorded
- Surveyed In
- Referenced Out

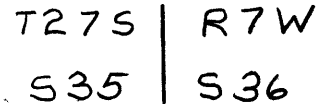
Previous Renewals MENSCH 1924 RESURVEY, M 43-38 NORTH CRAFT

MONUMENT DETAIL

Monument(s) Found: (Condition and Source)

A US GENERAL LAND OFFICE SURVEY
DISK ON A 2" I.P. PROTRUDING 6 IN.
ABOVE GROUND MARKED AS NOTED

US GENERAL LAND OFFICE SURVEY



1924 WC

Accessories Found:

NO ORIG. EVIDENCE FOUND

5" NOW A 2 1/2" DIA. W. OAK WITH A WELL HEALED SINGLE BLAZE
BEARS N 5° W 27.1 FT. (PER MENSCH 1924 RESURVEY).

NW CORNER OF HOUSE BEARS S 35 1/2° E, 196.7 FT
(REC. 195.4 FT) (PER MENSCH 1924 RESURVEY).

NO EVIDENCE FOUND OF BARN PER MENSCH 1924 RESURVEY.

A 5/8 IN. I.P. PROTRUDES 1 1/2" ABOVE GROUND
BEARS EAST, 60' (REC. S 89° 53' W) (PER M 43-38)
TOP OF I.P. BENT EAST.

#198 T.27-7
#261 T.28-7

RENEWAL

Monument Set (Procedure and Description)

NONE

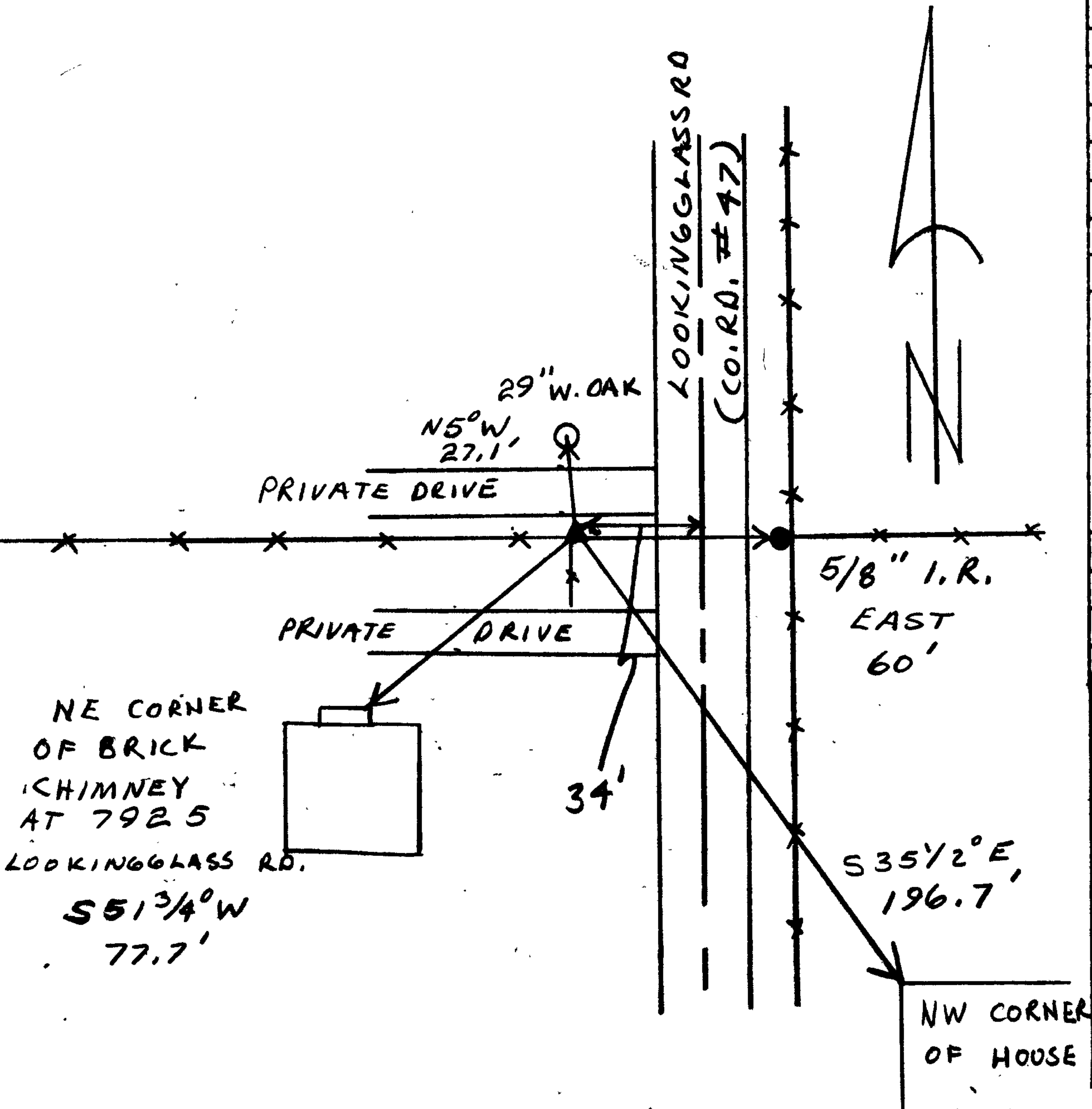
Monument Detail

N/A

New Accessories

THE NE CORNER OF BRICK CHIMNEY AT 7925 LOOKINGGLASS RD. BEARS S51 3/4° W, 77.7 FT.

Sketch of Monument, Accessories, and General Area



Location & Comments

CORNER IS APPROX. 0.5 MILES SOUTH OF LOOKINGGLASS ON THE WEST SIDE OF LOOKINGGLASS RD (CO. RD. #47)

Comp. Declin. 18 1/2° E
Agency DCSO
Party Chief RANDALL W. SMITH
Notekeeper Randall W. Smith
Witnesses STEPHEN J. FLAUSE

Surveyor's Seal

REGISTERED PROFESSIONAL LAND SURVEYOR

Larry E. Monrean

OREGON
JULY 13, 1979
LARRY E. MONREAN
#1830