

OREGON CORNER RESTORATION

Section 21 Township 31 South Range 9 West

Douglas County July 24, 1985

Corner Designation

The cor. of secs. 16, 17, 20 and 21 (NW cor. of sec. 21)
Renewal of removed iron post and brass cap.

Previous Renewals/Surveys, etc.

1901 Survey by W. Byars, U.S. Deputy Surveyor # 13
1967 Douglas County Surveyor's Office (DCSO) - Renewal # 118

Monument(s) & Accessories Found: (Condition and Source)

— Found the DCSO iron post and brass cap lying on the ground. Found the two remaining original bearing trees and the four bearing trees marked by the DCSO.

The original bearing trees;

A fir snag, 40 ins. diam., 25 ft. high, bears S. 38° E., 128 lks. dist. to face (84.5 ft.), with scribe marks T31SR9 S21 visible on open blaze. (DCSO record of 85.6 appears to be to the side center of tree)

A fir, 45 ins. diam., bears S. 45° W., 100 lks. dist. to face (66 ft.), with healed blaze.

The DCSO bearing trees;

A fir, 9 ins. diam., bears N. 26° E., 18.6 ft. dist., with healed blaze.

A fir, 11 ins. diam., bears S. 45° E., 15.3 ft. dist., with healed blaze.

A fir, 7 ins. diam., bears S. 21° W., 29.5 ft. dist., with healed blaze.

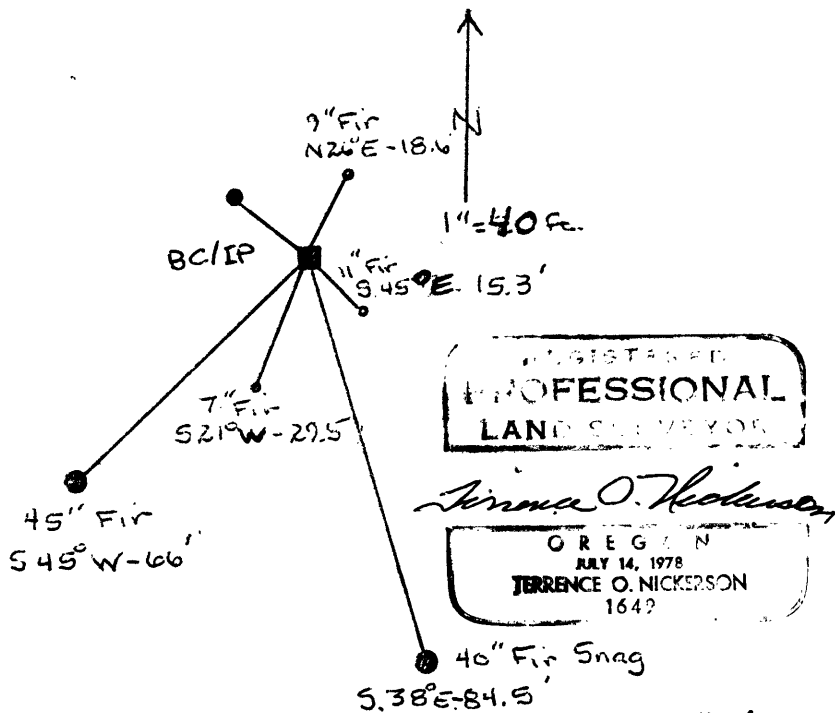
A fir, 16 ins. diam., bears N. 53° W., 18.1 ft. dist., with healed blaze.

Monument Detail

Brass Cap Marked
DOUGLAS COUNTY SURVEYORS OFFICE

T31S	R9W
S 17	S 16
S 20	S 21
1967	

Sketch



Monument Set

Reset the iron post (1" X 30") 18 ins. in the ground, to solid bedrock, in a collar of stone, 2 ft. base, 6 ins. high. The corner point fell in the middle of a large, down fir log (6 ft. diam.). I removed a section of this down log to monument the corner position.

Compass Declination 18½° E.

Witnesses D. Russel
T. Gawronski

Agency-U.S.BLM-Medford District

C.S. File No. 62/24-20

#169X