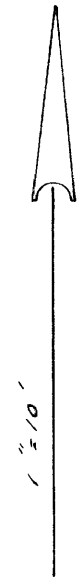


MULLHOLLAND MEADOWS
VOL. 6 PG 54

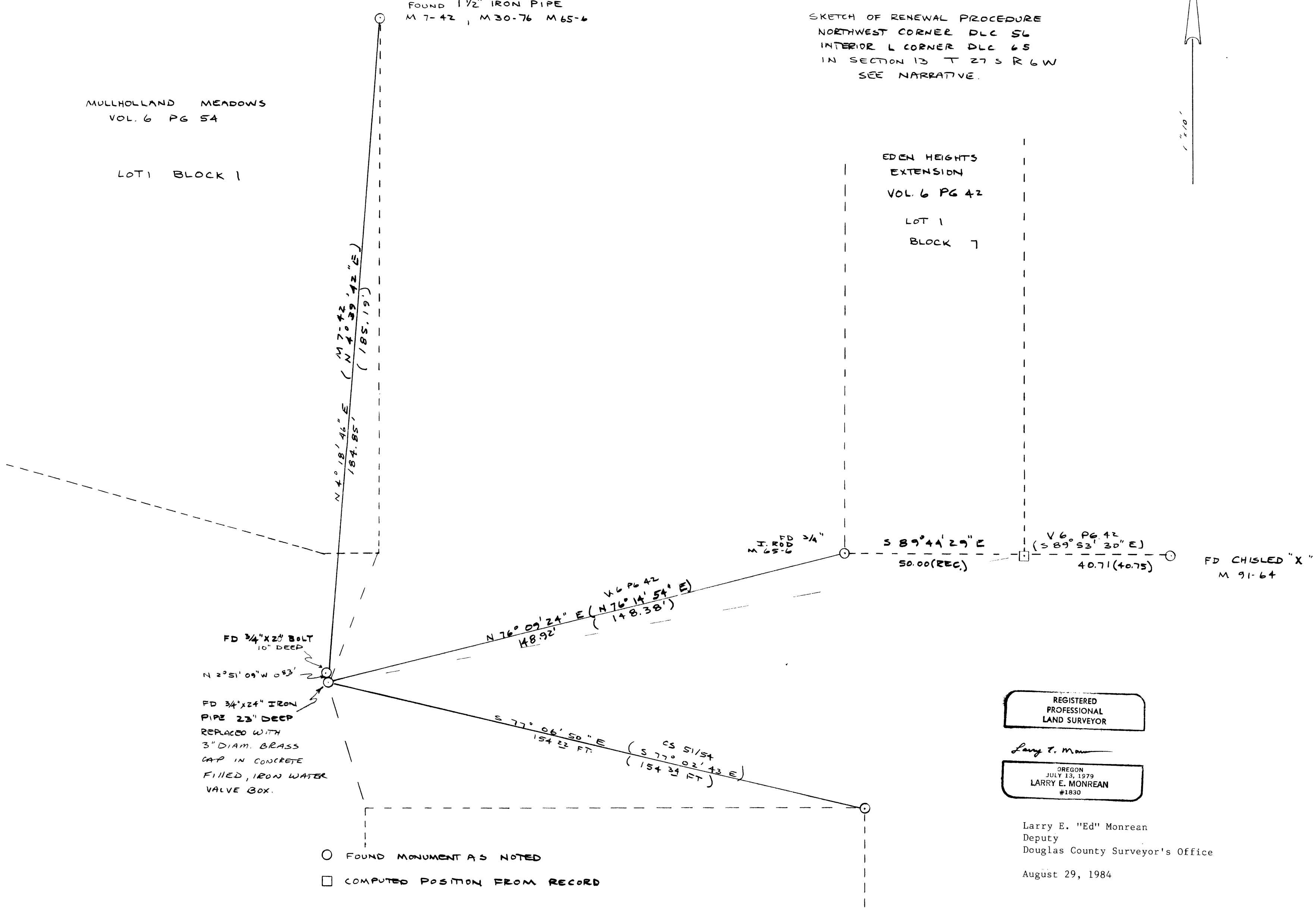
LOT 1 BLOCK 1

FOUND 1/2" IRON PIPE
M 7-42, M 30-76 M 65-6

SKETCH OF RENEWAL PROCEDURE
NORTHWEST CORNER DLC 56
INTERIOR L CORNER DLC 65
IN SECTION 13 T 27 S R 6 W
SEE NARRATIVE.



EDEN HEIGHTS
EXTENSION
VOL. 6 PG 42
LOT 1
BLOCK 7



FD 3/4" X 24" BOLT
10" DEEP
N 2° 51' 09" W 0.83'
FD 3/4" X 24" IRON
PIPE 23" DEEP
REPLACED WITH
3" DIAM. BRASS
CAP IN CONCRETE
FILLED, IRON WATER
VALVE BOX.

- FOUND MONUMENT AS NOTED
- COMPUTED POSITION FROM RECORD

REGISTERED
PROFESSIONAL
LAND SURVEYOR

Larry E. Monrean
OREGON
JULY 13, 1979
LARRY E. MONREAN
#1830

Larry E. "Ed" Monrean
Deputy
Douglas County Surveyor's Office
August 29, 1984

FD CHISELED "X"
M 91-64

NARRATIVE REPORT: Renewal - northwest corner DLC #56, also the interior L corner of DLC #65, in the northwest corner of Section 13, Township 27 South, Range 6 West, W.M.

This renewal was requested by the City of Roseburg. We were not able to locate the monuments or accessories as recorded in the original Donation Land Claim notes at the common corner location. We could not positively identify a monument of record at the corner location.

Upon examination of the site on August 22, 1984, we located a 3/4" x 24" iron pipe set 23 inches below the asphalt surface which we later accepted as the corner location. Also found was a 3/4" x 20" iron bolt 10 inches below the asphalt surface bears North 2° 51' 09" West 0.83 feet from the found iron pipe.

Along with the above-noted monuments, monuments from recorded surveys were tied by survey. Record bearings and distances were used to determine the most probable position for the Donation Land Claim corner. The procedure used was as follows:

1. The Southwest corner of Lot 1, Block 7 of Eden Heights Extension as monumented by a 3/4" iron rod by survey in file M65-6 was tied. Original plat bearings and distances per Volume 6, Page 42 were applied and computations were made to determine a record location for the DLC corner.
2. The Northeast corner of Lot 1, Block 1 of Mulholland Meadows Subdivision. The position as perpetuated with a 1-1/2" diameter iron pipe by survey in file M30-76 was tied. Bearings and distances of record per survey file M7-42 were applied and computations made to determine a record location for the DLC corner.
3. The Northeast corner of a parcel marked by survey in file C.S. 51/54, as remonumented with an iron rod and plastic survey cap by survey M91-64 was tied. Bearings and distances of record per survey file C.S. 51/54 were applied and computations made to determine a record location for the DLC corner.

As shown on the accompanying sketch, the found 3/4" x 24" iron pipe was accepted for the corner location. The computed record positions as shown below fall closer to the 3/4" iron pipe than the 3/4" x 20" bolt. The mean of the computed positions is North 67° 39' 14" West 0.27 feet from the 3/4" iron pipe. This position relates to the noted computations as follows:

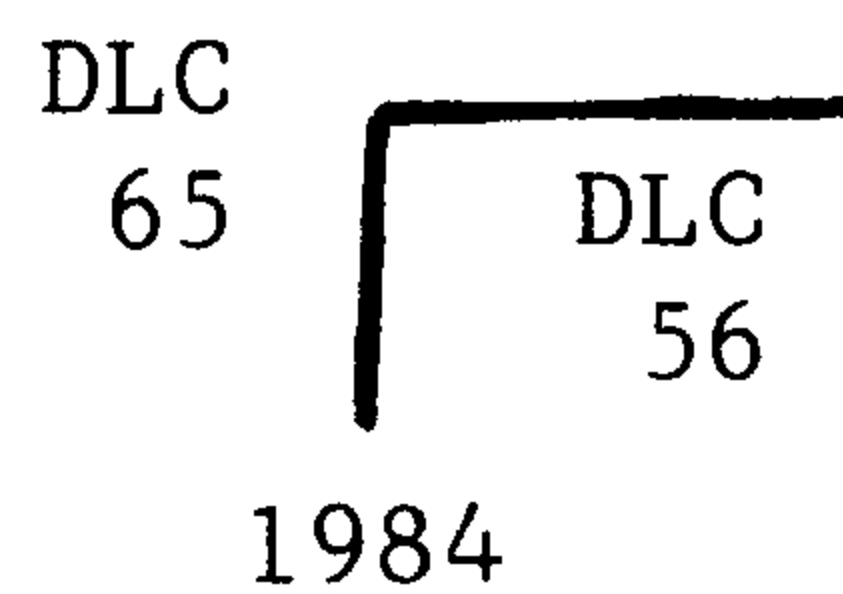
1. The Southwest corner of Lot 1, Block 7, Eden Heights Extension bears North 76° 09' 24" East 148.92 feet (computed record North 76° 14' 54" East 148.38 feet). The found 3/4" x 24" iron pipe bears South 52° 33' East 0.59 feet from the computed record position.
2. The Northeast corner of Lot 1, Block 1 Mulholland Meadows Subdivision bears North 4° 18' 46" East 184.85 feet (computed record North 4° 39' 47" East 185.19 feet). The found 3/4" x 24" iron pipe bears North 77° 38' East 1.18 feet from the computed record position.

3. The Northeast corner of the parcel shown on survey file C.S. 51/54 bears South $77^{\circ} 06' 50''$ East 154.22 feet (computed record South $77^{\circ} 02' 43''$ East 154.34 feet). The found $3/4''$ x 24" iron pipe bears South $19^{\circ} 51'$ West 0.22 feet from the computed record position.

The measured bearings and distances are true. A theta angle of $-1^{\circ} 57' 19''$ was applied to the inversed grid bearing of North $69^{\circ} 57' 04''$ West from Station IDID (DCSO 1980) to Station OMIE (DCSO 1980).

RENEWAL

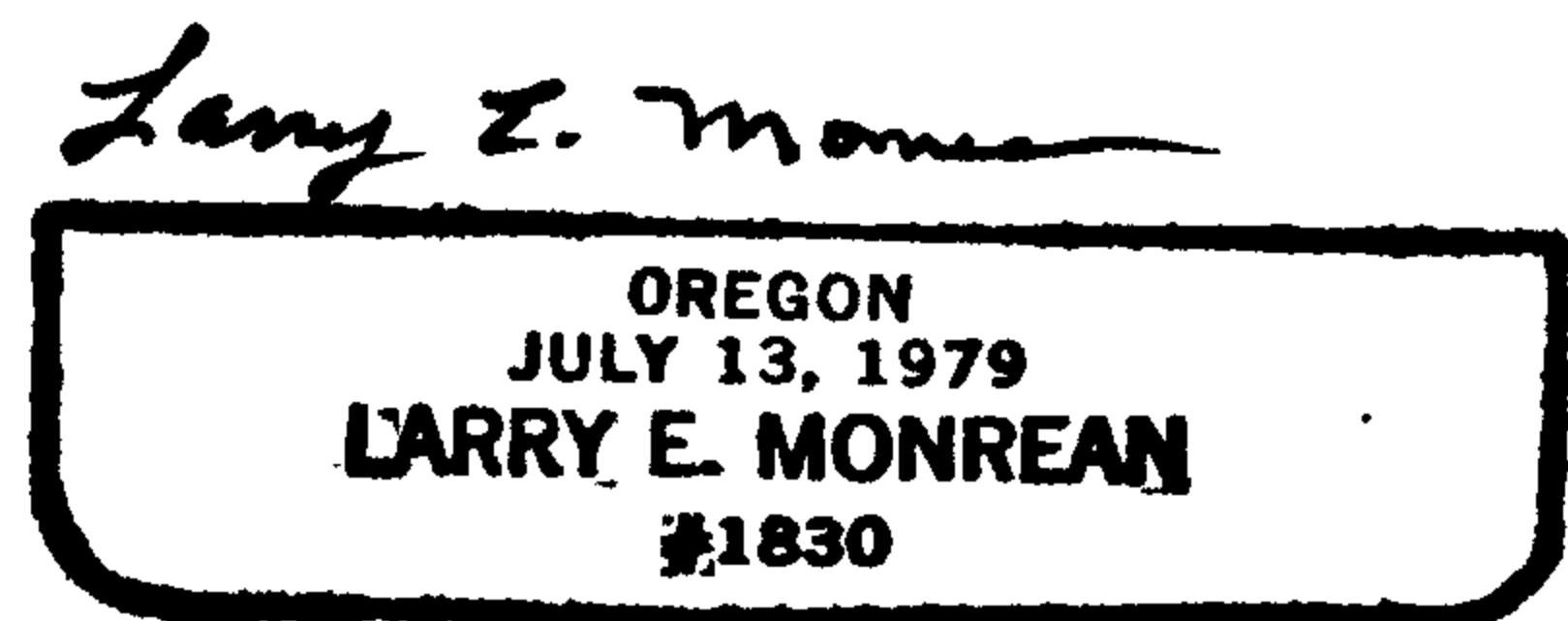
At the Northwest corner of DLC 56 and interior L corner of DLC #65 we replace the $3/4''$ x 24" iron pipe with a 3" diameter brass cap marked "T 27 S R 6 W".



The cap is set in a 5-1/2" x 21" iron water valve box filled with concrete. The cap is 5" below asphalt surface.

From which the following monuments are referenced:

1. The Southwest corner Lot 1, Block 7 Eden Heights Extension. A $3/4''$ iron rod bears North $76^{\circ} 09' 24''$ East 148.92 feet.
2. The Northeast corner of Lot 1, Block 1, Mulholland Meadows. A 1-1/2" iron pipe bears North $4^{\circ} 18' 46''$ East 184.85 feet.
3. The Northeast corner of a parcel per C.S. 51/54. An iron rod and plastic cap bears South $77^{\circ} 06' 50''$ East 154.22 feet.



Larry E. "Ed" Monrean
Deputy
Douglas County Surveyor's Office

August 29, 1984

FILED
RECEIVED *2/2*
AUG 28 1984
COUNTY SURVEYOR
DOUGLAS COUNTY, ORE.