

GOVERNMENT CORNER RESTORATION FORM

Township 30S Range 4W Sec. 1 County DOUGLAS

State OREGON Date NOV. 15, 1984 No. \_\_\_\_\_

Corner Designation

S2	S1
S11	S12

OLD REN. VOL 1 PG 143

Previous Renewals # 47, #108, #192, #263

Monument(s) Found: (Condition and Source)

FROM RENEWAL # 263 A D.C.S.D. 2 3/8 INCH DIAM. BRASS CAP ON A 1 1/4 INCH O.D. IRON PIPE FIRMLY SET AND PROTRUDING 5 INCHES FROM GROUND. CAP IS MARKED; EARLIER MONUMENTS PROBED FOR, NO EVIDENCE FOUND

- Condition Report Only
- Not Found
- Renewed
- Unrecorded
- Surveyed In
- Referenced Out

MONUMENT DETAIL

DOUGLAS COUNTY SURVEYOR  
T30S R4W

S2	S1
S11	S12

1976

Accessories Found:

ALL ORIGINAL (1954) R.T. SEARCHED FOR, NO EVIDENCE FOUND. FROM THIEL 1889 AND BRIGGS 1891 RESURVEYS ONLY EVIDENCE OF SOUTHEAST BEARING TREE FOUND; ORIGINALLY RECORDED AS R. FIR 36 INS. DIAM. IS NOW A DECAYED 33 INS. D.B.H. X 4 FT TALL STUMP BEARING S 06° E 35 3/4 FT. DIST. 35 1/2 SLOPE DIST. TO FACE (RECORD S 6° E, 33.7 FT). TREE HAS POSSIBLE EVIDENCE OF A HEALED BLAZE THIS IS OPENED TO REVEAL DECAYED INTERIOR OF STUMP, NO EVIDENCE OF FACE OR SCRIBING FOUND.

NO EVIDENCE FOUND FROM RENEWAL # 47.  
FROM RENEWAL # 108 THREE TREES FOUND. A RECORD 8 INCH R. FIR NOW A 20 INCH D.B.H. GRAND FIR, BEARS N 15° E, 91 1/2 FT. DIST. (AS PER RECORD) TREE HAS WELL HEALED DOUBLE BLAZE.  
A 16" W. FIR NOW A 19 INCH DIAM. X 1 FT TALL DECAYED FIR STUMP BEARS N 58° W, 41.6 FT DIST. (AS PER RECORD), TREE HAS REMAINS OF LOWER BLZ. WITH SCRIBING BT VISIBLE (AND BRASS PLATE AS NOTED IN RENEWAL # 108 IS FOUND HEALED IN THE LOWER BLAZE, NOW IN D.C.S.D. ARTIFACT DISPLAY)  
A 12 INCH R. FIR NOW A 24 INCH D. B.H. DOUGLAS FIR BEAR. S 67 1/2° E, 25 3/4 FT. DIST. (REC. S 65° E, 25 3/4 FT. DIST.) TREE HAS WELL HEALED DOUBLE BLAZE WITH NO SCRIBING VISIBLE.

NEW BT. FROM RENEWAL # 192 SEARCH FOR BUT NOT FOUND.  
FROM REN # 263, TWO NEW BT'S A 7" WHITE FIR NOW A 9 INCH DIAM. 12 INCH TALL WHITE FIR STUMP BEAR. S 45° W, 39 1/2 FT DIST. (39 1/2 REDUCED FROM 40 6 SLOPE DIST. TAG ON CUT PORTION OF TREE WITH SAME DATE AS REN # 263 HAS DIST. MARKED AS 40 6 FT.) (BEARING FOUND AS REC). OPEN PORTION OF (CONT'D IN MON. SET)

#287x

C.S. File No. 62/21-43

RENEWAL

Monument Set (Procedure and Description)

Monument Detail

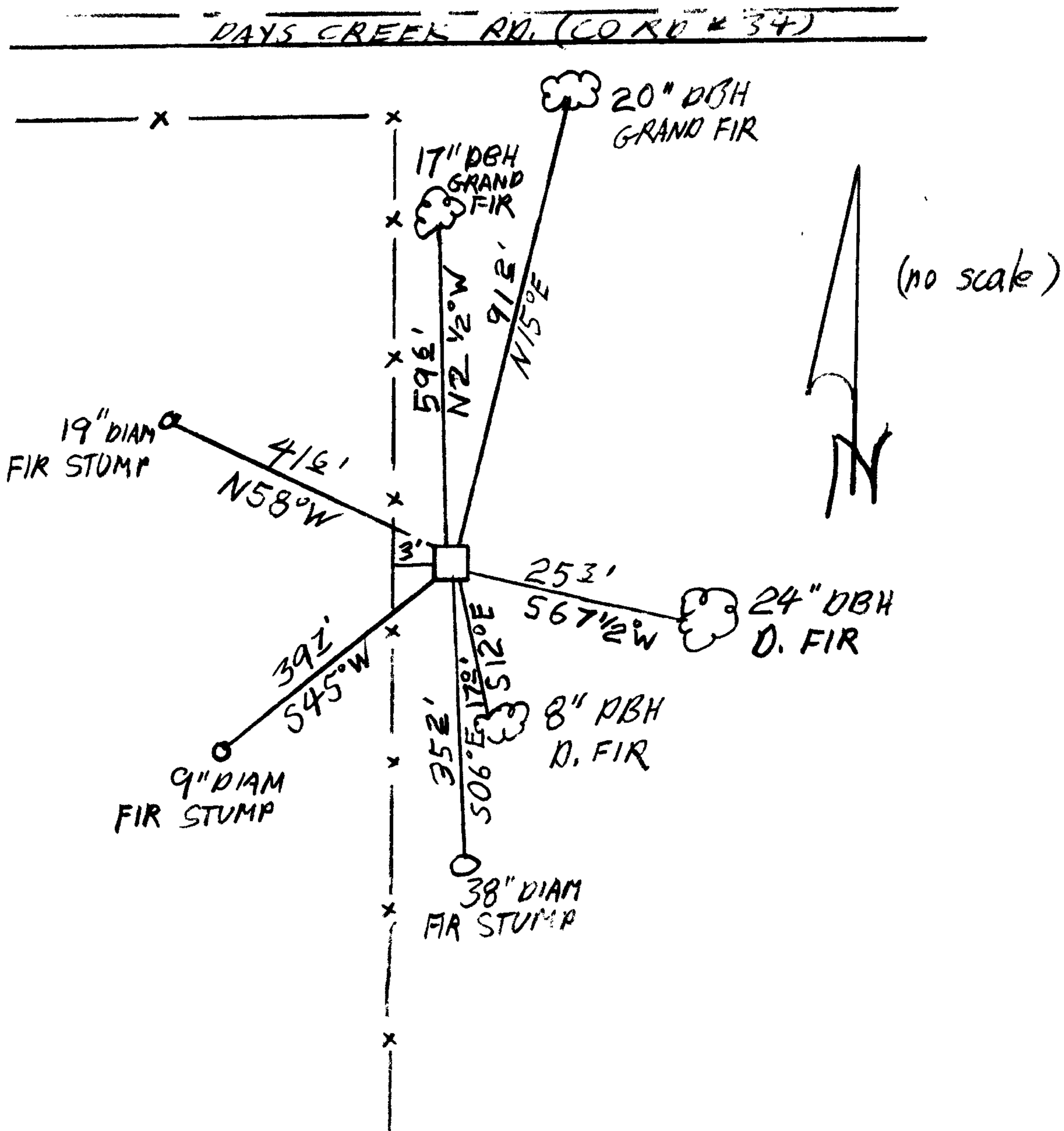
MONUMENT POSITION IS PERPETUATED AS FOUND. TRAIN OF EVIDENCE FOLLOWS WELL FROM ORIGINAL 1854 SURVEY WITH ONE EXCEPTION BEING THE NE BEARING TREE NOTED IN THIEL'S 1884 SURVEY AND BRIGGS' 1891 SURVEY. HERE THE DIST. REC-ORDED TO A WHITE FIR CHANGES FROM 20 TO 26 LINKS. CAUSE OF ERROR UNKNOWN.

ACCESSORIES FOUND CONT'D.  
UPPER BLAZE HAS SCRIBING 30 S 4 VISIBLE, THERE IS ALSO A LOWER HEALED BLAZE.  
A 16" WHITE FIR NOW A 17 INCH DBH GRAND FIR BEARS N 2 1/2° W, 59 1/2 FT DIST. (AS PER RECORD) TREE HAS MARKING 30 S R 4 W S 2 CS VISIBLE IN A PARTIALLY HEALED DOUBLE BLAZE.

New Accessories

AN 8 INCH P.C.H. DOUGLASS FIR SCRIBED, T 30 S R 4 W S 12 CS BT, ON A DOUBLE BLAZE BEARS S 12° E, 17 1/2 FT DISTANT.

Sketch of Monument, Accessories, and General Area



Location & Comments

MONUMENT LIES APPROX 100 FT SOUTH OF DAYS CREEK ROAD (CO. RD. # 34). MONUMENT LIES 3 FT EAST OF A NORTH-SOUTH FENCE LINE

Comp. Declin. 18 1/2° E  
Agency DC 50  
Party Chief S. J. FLAUSE  
Notekeeper Stephen John [unclear]  
Witnesses R. W. SMITH

Surveyor's Seal  
REGISTERED  
PROFESSIONAL  
LAND SURVEYOR

Larry E. Monrean  
OREGON  
JULY 13, 1979  
LARRY E. MONREAN  
#1830