

GOVERNMENT CORNER RESTORATION FORM

Township 28S Range 8W Sec. 10 County DOUGLAS

State OR Date 8/19/89 No. _____

Corner Designation

S10	S11
S15	S14

- Condition Report Only
- Not Found
- Renewed
- Unrecorded
- Surveyed In
- Referenced Out

Previous Renewals #1, #29, #41

Monument(s) Found: (Condition and Source)

A BRASS CAP ON A I.P. PROTRUDING
9" ABOVE GROUND. MARKED AS
NOTED (PER REN #29)

MONUMENT DETAIL

COUNTY SURVEYORS OFFICE

T28S R8W

SEC	10	11
	15	14
	1957	

Accessories Found:

- ① A 12" OAK NOW A ROOT HOLE BEARS S65°E, 29.4 FT. (ORIG.)
- ② A 12" NOW A 10" DIA. DOWN AND ROTTED OAK, NO SCRIBING FOUND
BEARS N42°W, 27.1 FT. (ORIG.)
- ③ A 12" NOW A 12" DIA. DOWN AND ROTTED OAK, NO SCRIBING FOUND
BEARS S36°W, 112.2 FT (ORIG.)
- ④ A 4" NOW A 13" DIA. D. FIR, WITH A WELL HEALED DOUBLE BLAZE
BEARS N71°W, 40.0 FT (REC. 40.4'). (PER REN #29).
- ⑤ A 8" NOW A 18" DIA. D. FIR, WITH A WELL HEALED DOUBLE BLAZE
BEARS S65°W, 72.8 FT (PER REN #29).
- ⑥ A 7" NOW A 11" DIA. FORKED W. OAK WITH A WELL HEALED DOUBLE BLAZE
BEARS N71 1/2°E, 29.1 FT (PER REN #29).
- ⑦ A 8" NOW A 13" DIA. MADRONE WITH A WELL HEALED DOUBLE BLAZE.
BEARS S67°E, 37.0 FT (REC. 36.5 FT TO BLAZED FACE) (PER REN #29).

C.S. File No. 62/21-39

FD-302

RENEWAL

Monument Set (Procedure and Description)

Monument Detail

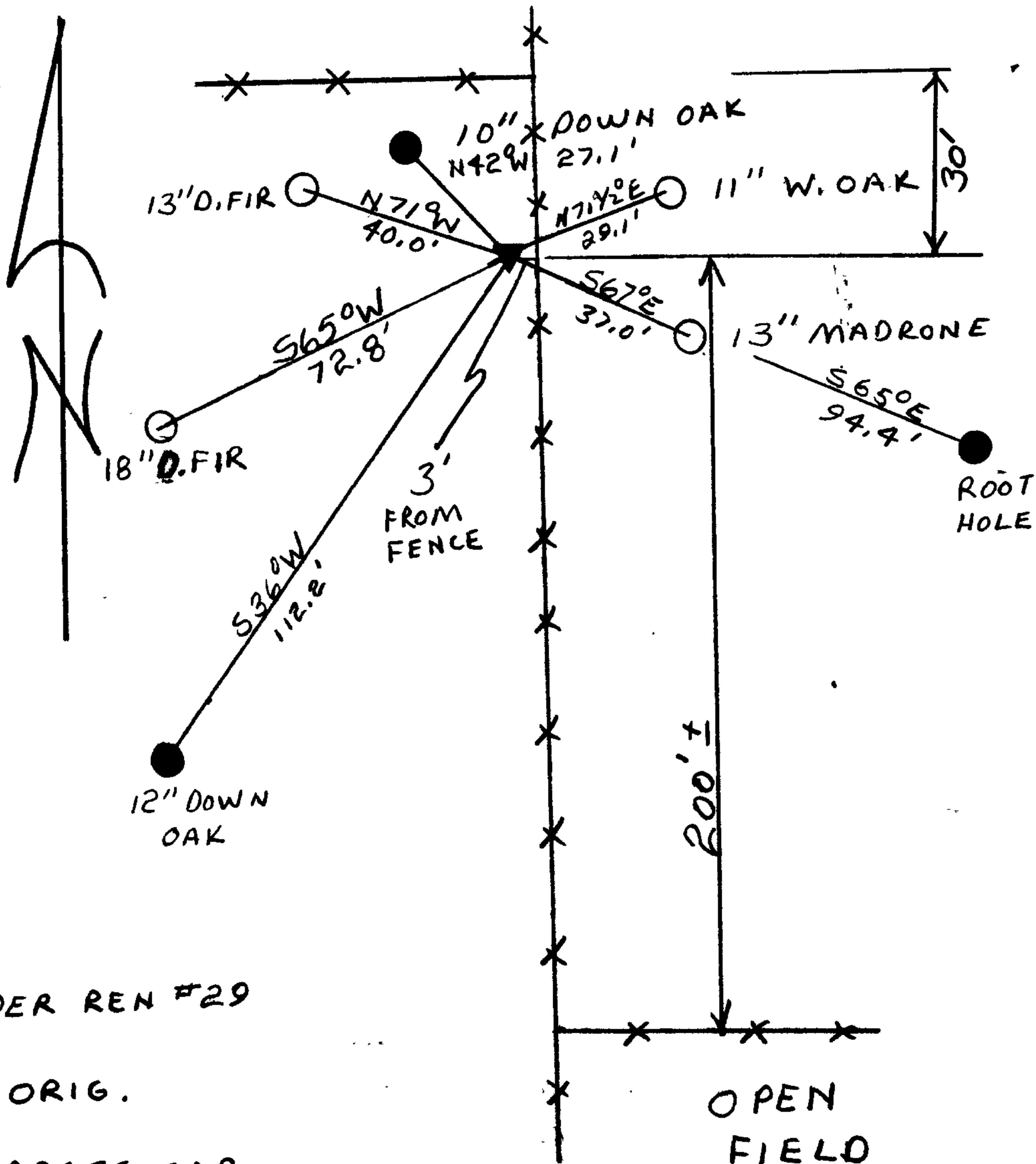
NONE

N/A

New Accessories

NONE

Sketch of Monument, Accessories, and General Area



- PER REN #29
- ORIG.
- ▲ BRASS CAP

Location & Comments

CORNER IS APPROX. N 75° W
1500 FT FROM THE INTERSECTION
OF CO. RD #5 (RESTON RD) AND
CO. RD #112 (COOS BAY WAGON RD).

Comp. Declin. 18 1/2° EAST
 Agency DCSO
 Party Chief RANDALL W SMITH
 Notekeeper Randall W Smith
 Witnesses STEPHEN J FLEUSE

Surveyor's Seal

REGISTERED
 PROFESSIONAL
 LAND SURVEYOR

Randall W Smith
 OREGON
 1978
 RANDALL W. SMITH
 1930