

GOVERNMENT CORNER RESTORATION FORM

Township 285 Range 7W Sec. 29 County DOUGLAS

State OREGON Date 10/22/84 No. _____

Corner Designation

1/4 S29 | S28.

- Condition Report Only
- Not Found
- Renewed
- Unrecorded
- Surveyed In
- Referenced Out

Previous Renewals # 88, # 123, VOL 3 Pg 126

Monument(s) Found: (Condition and Source)

FOUND A 3/4" I.R. 13" BELOW
GROUND (PER REN #88)

MONUMENT DETAIL

N/A

Accessories Found:

A 28" NOW A 37" DIA. D. FIR WITH A DOUBLE WELL
HEALED BLAZE, BEARS S 80 1/2° W, 317.8' (REC. S 81 1/2° W),
(PER REN # 88)

A 30" NOW A 40" DIA. B. OAK WITH A DOUBLE WELL
HEALED BLAZE BEARS S 87 1/2° E, 151.5' (REC. S 86 1/2° E),
(PER REN # 88)

#259 X

C.S. File No. 62/21-32

C

RENEWAL

Monument Set (Procedure and Description)

Monument Detail

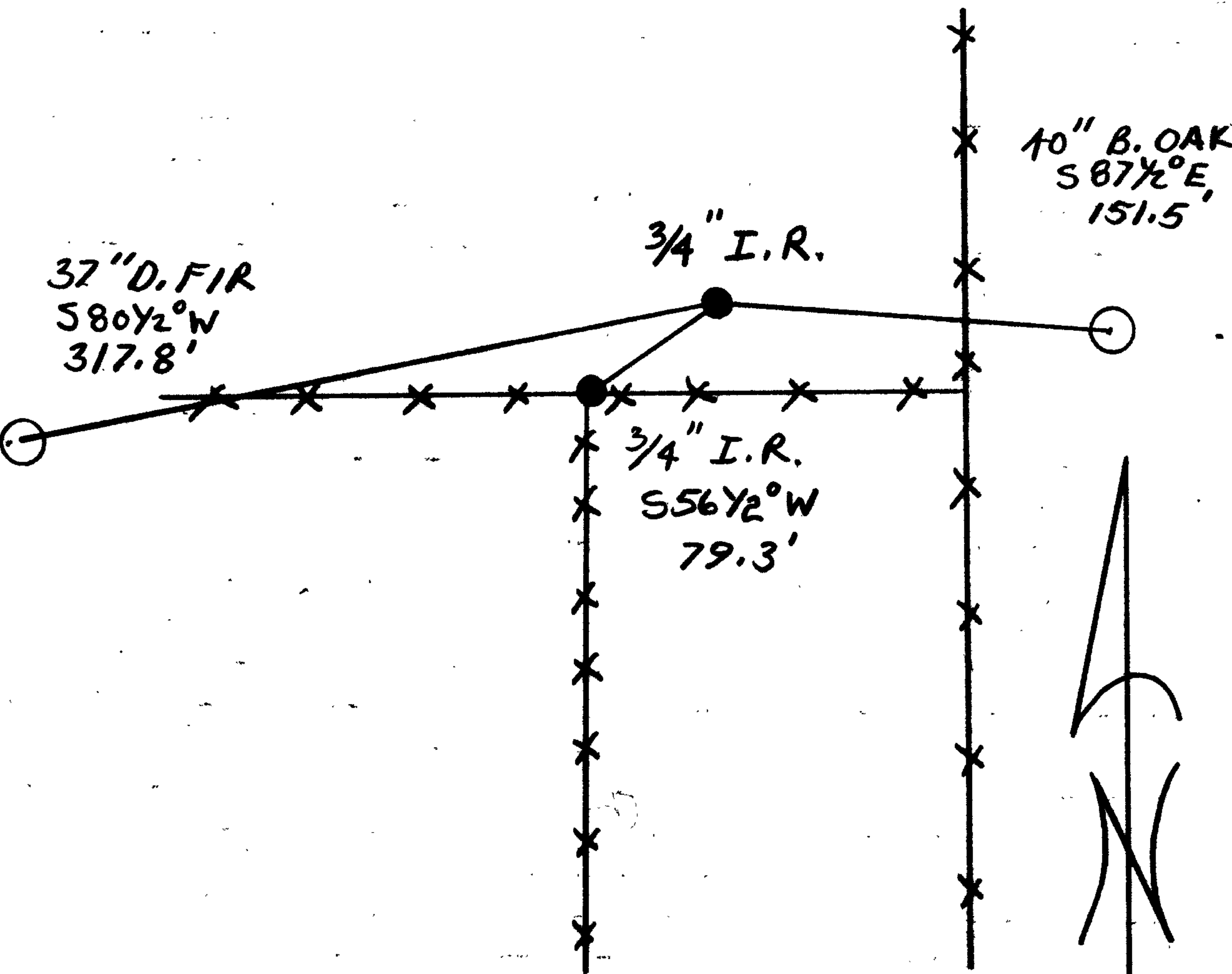
NONE

N/A

New Accessories

A 3/4" I.R. PROTRUDES 4" ABOVE GROUND BEARS
S 56 1/2° W, 79.3' (SET PER MG-60).

Sketch of Monument, Accessories, and General Area



Location & Comments

CORNER LIES IN PASTURE
LAND

NOTE: SET A
G.G. STEWART HAD MONUMENT
FOR CORNER POSITION IN 1922
BY METHOD OTHER THAN THE
STANDARD-PROPORTIONAL METHOD.
THIS MONUMENT NOT FOUND

Comp. Declin. 18 1/2° E
Agency DCSD
Party Chief RANDALL W. SMITH
Notekeeper Randall W. Smith
Witnesses STEPHEN J. FLAUSE

Surveyor's Seal

REGISTERED
PROFESSIONAL
LAND SURVEYOR

Larry E. Monrean

OREGON
JULY 13, 1979
LARRY E. MONREAN
#1830