

GOVERNMENT CORNER RESTORATION FORM

Township 28S Range 7W Sec. 28 County DOUGLAS

State OREGON Date 10/22/84 No. \_\_\_\_\_

Corner Designation

NE COR  
DLC  
#54

- Condition Report Only
- Not Found
- Renewed
- Unrecorded
- Surveyed In
- Referenced Out

Previous Renewals #30, #62

Monument(s) Found: (Condition and Source)

A 1/2" I.P. FLUSH WITH GROUND (PER REN #30).

MONUMENT DETAIL

N/A

Accessories Found:

A 72" DIA. B. OAK BEARS S 14° E, DISTANCE OF 107' APPEARS TO BE TO FACE (REC. SIZE) AT PROPERTY OWNERS REQUEST WE DID NOT ENTER LAND BT IS ION. (PER REN #30)

A 30" NOW A 40" DIA. PINE WITH A WELL HEALED SINGLE BLAZE BEARS N 66° W, 53.2' (PER REN #62).

A 8" NOW A 19" DIA W. OAK WITH A WELL HEALED SINGLE BLAZE BEARS SOUTH, 30.8' (PER REN #62).

\*260 X

RENEWAL

Monument Set (Procedure and Description)

Monument Detail

NONE

N/A

New Accessories

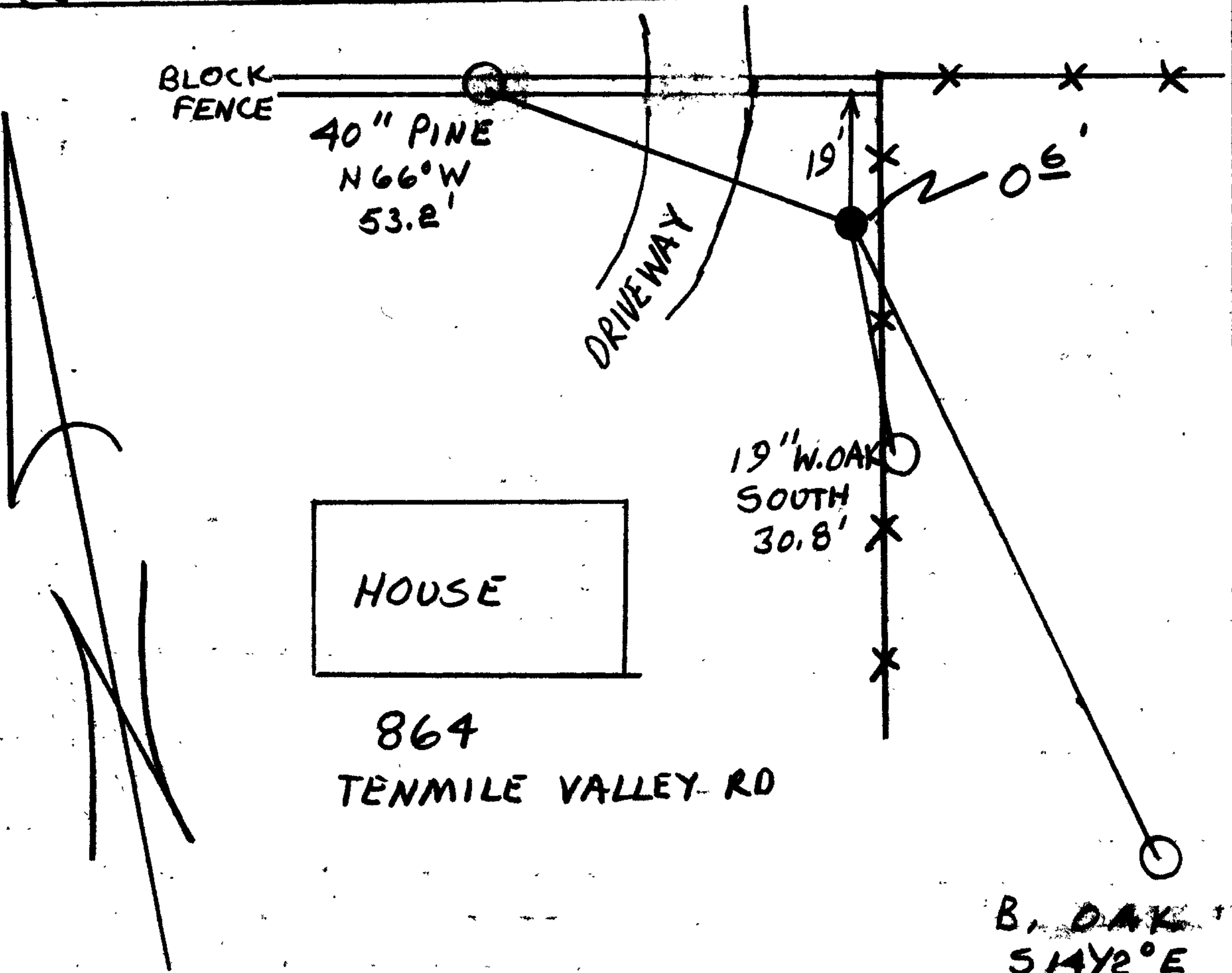
NONE

Sketch of Monument, Accessories, and General Area

Location & Comments

TENMILE VALLEY RD  
(Co. RD. # 109)

CORNER LIES IN NE CORNER OF YARD AT 864 TENMILE VALLEY RD.



Comp. Declin.  $18^{\circ}42' E$   
Agency DCSO  
Party Chief RANDALL W SMITH  
Notekeeper Randall W Smith  
Witnesses STEPHEN J FLAUSE

Surveyor's Seal

REGISTERED  
PROFESSIONAL  
LAND SURVEYOR

Larry E. Monrean

OREGON  
JULY 13, 1979  
LARRY E. MONREAN  
#1830