

GOVERNMENT CORNER RESTORATION FORM

Township 28S Range 7W Sec. 6 County DOUGLAS

State OR Date 9/13/84 No. _____

Corner Designation

N 1/4 56

- Condition Report Only
- Not Found
- Renewed
- Unrecorded
- Surveyed In
- Referenced Out

MONUMENT DETAIL

Previous Renewals BLM 1924 RESURVEY, # 95, # 131

Monument(s) Found: (Condition and Source)

A BRASS CAP ON A 2 IN. I.P.
PROTRUDES 16 IN. ABOVE GROUND
MARKED AS NOTED (PER BLM 1924
RESURVEY).

GENERAL LAND OFFICE SURVEY

1 56
4
1924

Accessories Found:

16" NOW A 27" DIA. W. OAK WITH A WELL HEALED SINGLE BLAZE
BEARS S 87° W, 15.8' (REC. S 85° W, 15.0') (BLM 1924 RESURVEY)

10" W. OAK NOW A DEPRESSION IN THE GROUND
BEARS S 48 1/2° E, 28.7' ORIG. (BLM 1924 RESURVEY)

8" NOW A 25" DIA. D. FIR WITH A WELL HEALED DOUBLE BLAZE
BEARS S 20° E, 45' (REC S 18° E) (PER BEN # 131)

#257 X

C.S. File No. 62/21-30

RENEWAL

Monument Set (Procedure and Description)

Monument Detail

NONE

N/A

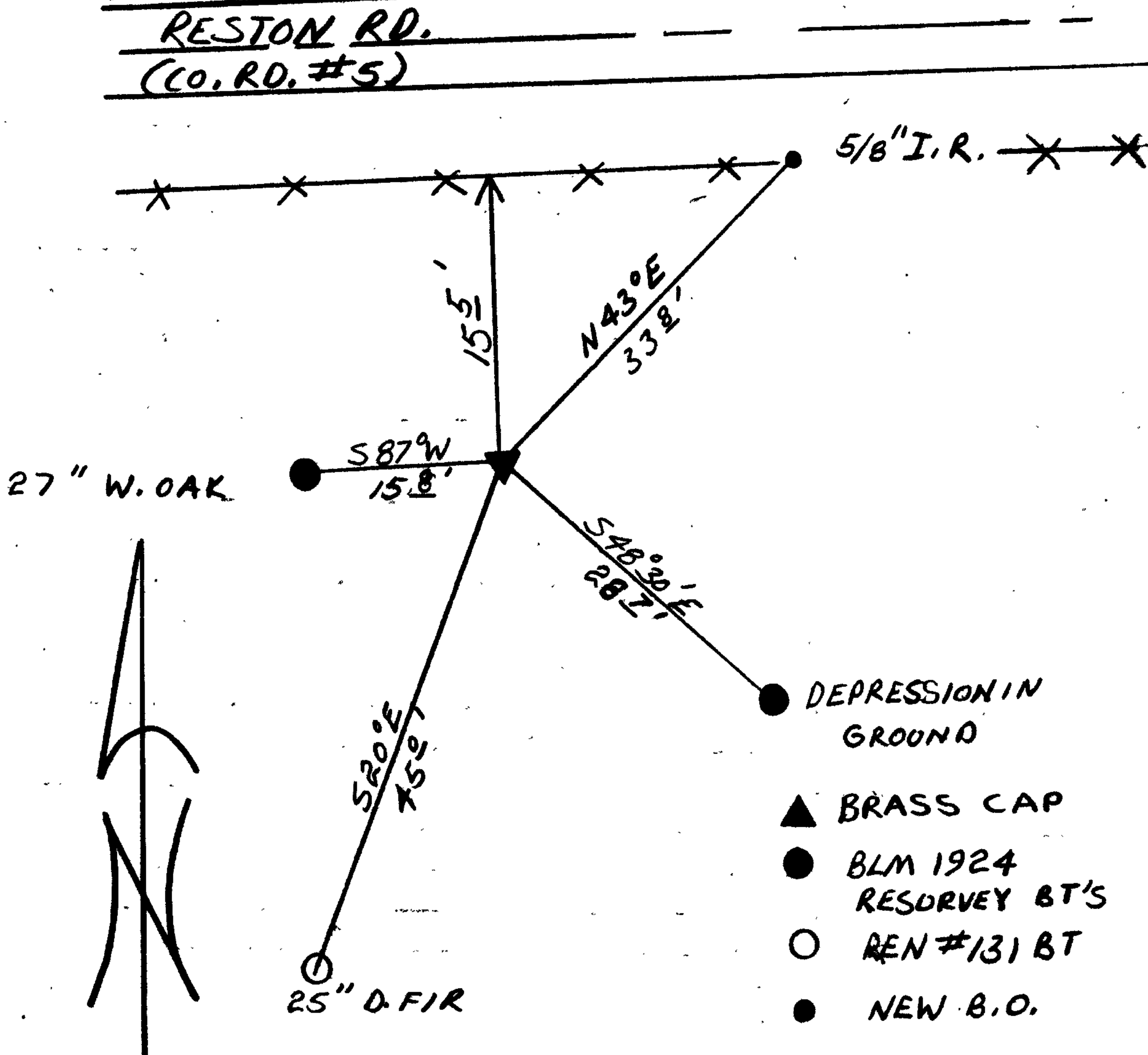
New Accessories

A 5/8" I.R. WITH AN ALUMINUM CAP STAMPED "DOUGLAS CO. RD BOPA R-W 40" PROTRUDES 4 IN ABOVE GROUND. BEARS N43°E, 33.8 FT.

Sketch of Monument, Accessories, and General Area

Location & Comments

CORNER LIES IN AN OPEN FIELD, 55.5 SOUTH OF RESTON RD (CO. RD #5).



Comp. Declin. 18 1/2° E
Agency DCSO
Party Chief RANDALL W SMITH
Notekeeper Randall W Smith
Witnesses STEPHEN J FLAUSE

Surveyor's Seal

REGISTERED PROFESSIONAL LAND SURVEYOR

Larry E. Monrean
OREGON
JULY 13, 1979
LARRY E. MONREAN
#1830