

GOVERNMENT CORNER RESTORATION FORM

Township 285 Range 6W Sec. 28 County DOUGLAS

State OREGON Date 12/10/84 No. \_\_\_\_\_

Corner Designation

S29	S28
S32	S33

- Condition Report Only
- Not Found
- Renewed
- Unrecorded
- Surveyed In
- Referenced Out

Previous Renewals #30, #109

Monument(s) Found: (Condition and Source)

A DCSDISK ON A I.P. PROTRUDING  
18" ABOVE GROUND. (MARKED AS NOTED)  
PER. REN # 109.

COUNTY SURVEYORS OFFICE

T285 R6W

S29	S28
S32	S33

1961

Accessories Found:

NO ORIG. BITS FOUND

8" NOW A 29" B.OAK WITH A WELL HEALED SINGLE BLAZE  
BEARS S42°W, 72.2' (REC S38°W, 71.0' REN #109) PER REN #30

15" NOW A 27" B.OAK WITH A WELL HEALED DOUBLE BLAZE  
BEARS S59°E, 77.0' (PER REN #30).

9" NOW A 12" W.OAK WITH A WELL HEALED DOUBLE BLAZE  
BEARS N16°E, 102.2 FT (PER REN. #109).

#1694

C.S. File No. 62/21-29  
C

RENEWAL

Monument Set (Procedure and Description)

Monument Detail

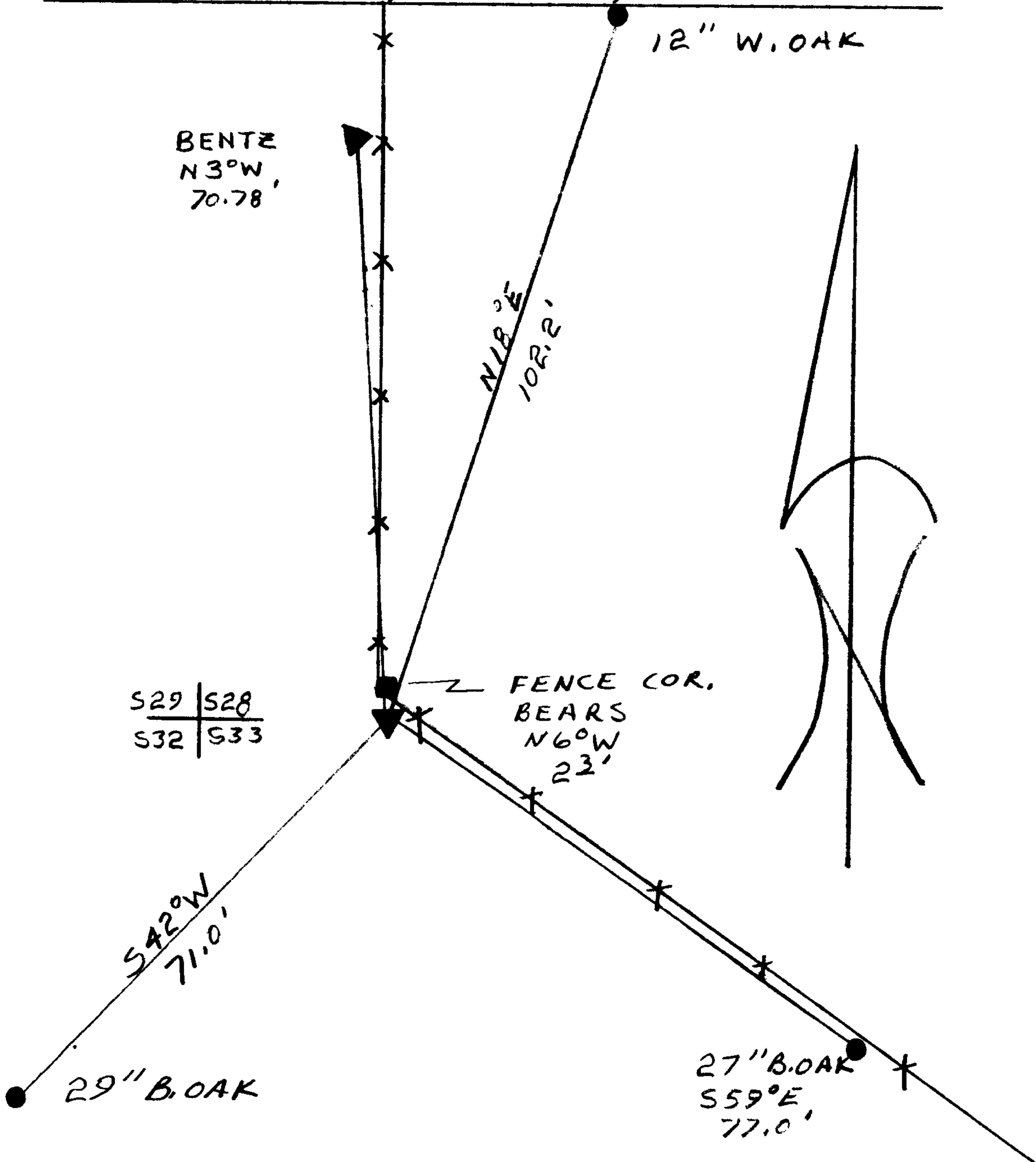
NONE

N/A

New Accessories

A DCSO DISK STAMPED "BENTZ 1972" BEARS N3°W, 70.78 FT.

Sketch of Monument, Accessories, and General Area



Location & Comments

CORNER LIES ON A STEEP WEST SLOPE ABOVE ROSEBURG LUMBER WASTE DISPOSAL SITE.

Comp. Declin. 1872°E  
Agency DCSO  
Party Chief RANDALL W. SMITH  
Notekeeper Randall W. Smith  
Witnesses STEPHEN J. FLAUSE

Surveyor's Seal

REGISTERED PROFESSIONAL LAND SURVEYOR

Larry E. Monrean

OREGON JULY 13, 1979 LARRY E. MONREAN #1020