

GOVERNMENT CORNER RESTORATION FORM

Township 27S Range 3W Sec. 2 County DOUGLAS

State OREGON Date DEC. 7, 1984 No. _____

Corner Designation

1/4 $\frac{S2}{S11}$

- _____ Condition Report Only
- _____ Not Found
- Renewed
- _____ Unrecorded
- _____ Surveyed In
- _____ Referenced Out

1984 BLM RESURVEY CS 42/404

Previous Renewals 23, 33, 1958 DEPENDENT RESURVEY

Monument(s) Found: (Condition and Source)

FROM 1958 DEPENDENT RESURVEY A 3/4 INCH DIAMETER BLM DISK ON A 2 1/2 INCH DIAMETER IRON PIPE, MARKED AS AT RIGHT, IS FIRMLY SET AND PROTRUDES 6 INCHES FROM THE GROUND. AT WEST EDGE OF BLM MONUMENT A 5/8 INCH DIAMETER IRON ROD IS FIRMLY SET AND PROTRUDES 18 INCHES FROM THE GROUND.

ROCK MOUND FROM RENEWAL #23 NO LONGER EVIDENT

NO EVIDENCE OF 3/4 INCH IRON BAR, PIN OR PIPE AS RECORDED IN RENEWALS #23 AND #33 AND THE 1958 DEPENDENT RESURVEY IS FOUND.

MONUMENT DETAIL

U.S. CADASTRAL SURVEY

T27S R3W

1/4 $\frac{S2}{S11}$

1958

BUREAU OF LAND MANAGEMENT

Accessories Found:

ORIGINAL BEARING TREES SEARCHED FOR NO EVIDENCE FOUND. RENEWAL #23 TREES SEARCHED FOR; NOT FOUND. BEARING TREES FOR RENEWAL #33 SEARCHED FOR; SW OAK B.T. AND REMAINS OF SE CEDAR B.T. FOUND. 110" W. NOW A 14 INCH D.B.H. WHITE OAK BEARS S 06 1/4° W, 119.6 FT. DIST. (RECORD) S 03 1/4° W, 119° FT.) THIS TREE HAS A WELL HEALED SINGLE BLAZE, NO SCRIBING VISIBLE. A 14 INCH CEDAR NOW A 15 INCH DIAMETER, 4 FOOT TALL CEDAR STUMP WITH THE SCRIBING 1/4 COR 1 SEC 21 VISIBLE IN AN OPENED

SINGLE BLAZE, BEARS S 86° E 64.5 FT. DIST (RECORD) S 89° E, 64.5 FT.)

FROM 1958 DEPENDENT RESURVEY TWO BEARING TREES FOUND AS FOLLOWS: A FIR 15 INS. DIAM. NOW A 15 INCH DIAM. 6 FT. TALL FIR STUMP WITH A WELL HEALED SINGLE BLAZE, NO SCRIBING VISIBLE, BEARS N 19° E, 163.0 FT. DIST. (AS PER RECORD). ALSO AN 18 INS. DIAM. CEDAR NOW A 24 INCH DIAMETER 2 FT TALL CEDAR STUMP WITH A WELL HEALED SINGLE BLAZE BEARS, S 44 1/2° E, 132 ± FT. DIST. (AS PER RECORD)

#1384

C.S. File No. 62/21-25

RENEWAL

Monument Set (Procedure and Description)

Monument Detail

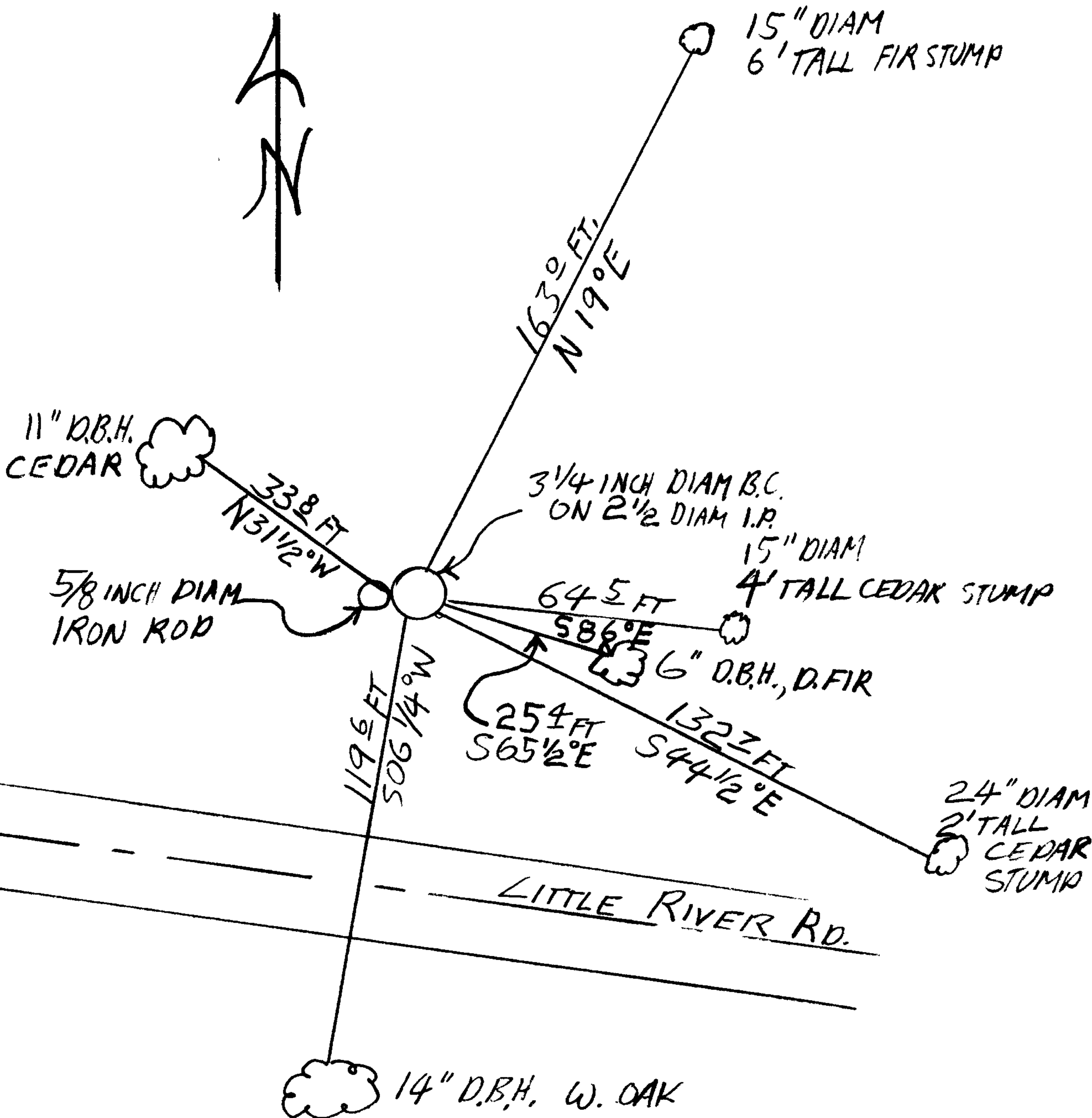
N/A

N/A

New Accessories

TWO NEW BT'S FROM AS YET UNRECORDED BLM SURVEY DONE IN 1984
A 6 INCH D.B.H. DOUGLAS FIR WITH THE SCRIBING 1/4 S11 BT VISIBLE IN A PARTIALLY HEALED SINGLE BLAZE BEARS, S65 1/2° E, 25 1/4 FT. DIST.
AN 11 INCH D.B.H. CEDAR WITH THE SCRIBING 1/4 S2 BT VISIBLE IN A PARTIALLY HEALED SINGLE BLAZE BEARS, N31 1/2° W, 33 8 FT. DIST.

Sketch of Monument, Accessories, and General Area



Location & Comments

MONUMENT LIES NEAR TOP OF CUT BANK ON NORTH SIDE OF LITTLE RIVER RD. APPROXIMATELY 0.2 MILES SOUTHEAST OF LITTLE RIVER STORE (CAVITT CREEK AREA).

Comp. Declin. 18 1/2° E
Agency DC SO
Party Chief STEPHEN JOHN FLAUSE
Notekeeper Stephen John Flause
Witnesses A.W. SMITH

Surveyor's Seal
REGISTERED
PROFESSIONAL
LAND SURVEYOR

Larry E. Monrean

OREGON
JULY 13, 1979
LARRY E. MONREAN
#1830