

GOVERNMENT CORNER RESTORATION FORM

Township 26S Range 3W Sec. 18 County DOUGLAS

State OREGON Date 12/27/84 No. _____

Corner Designation

W.C.
1/4 S18
S19

- Condition Report Only
- Not Found
- Renewed
- Unrecorded
- Surveyed In
- Referenced Out

Previous Renewals #100 (SEE ALSO CS 3/16, CS 36/31, CS 32/10, M16-76) MONUMENT DETAIL

Monument(s) Found: (Condition and Source)

COUNTY SURVEYORS OFFICE

T26S R3W

W.C. S18
 30 S19
 SOUTH
 TO 1/4 S
 1961

ACTUAL QUARTER CORNER MONUMENT (ORIGIN UNKNOWN) FALLS IN MIDDLE OF A ROAD WITH THICK ASPHALTIC SURFACING; THIS MONUMENT IS NOT SEARCHED FOR.
 FROM RENEWAL #100 A DC50 BRASS CAP ON A 1 1/4 INCH DIAM. IRON PIPE MARKED AS AT RIGHT IS FIRMLY SET AND PROTRUDES APPROXIMATELY 1 FOOT FROM GROUND.

Accessories Found:

NO EVIDENCE OF ORIGINAL BEAKING TREES FOUND.

FROM RENEWAL #100 A 26" DBL W. OAK, NOW A 28 INCH DBH DOUBLE TRUNKED WHITE OAK WITH A WELL HEALED NOUISLE BLAZE BEARS N 26° E, 23° FT DIST. (AS PER RECORD).

#237x

C.S. File No. 12/26-18 U

RENEWAL

Monument/ Set (Procedure and Description)

Monument Detail

NO MONUMENT SET
 EVIDENCE OF LONG ACCEPTANCE OF LOCATION OF GUN BARREL MARKING 1/4 CORNER POSITION, CAN BE FOUND IN CS 3/16 AND CS 36/31. ALSO CS 32/10 AND M 16-76.

New Accessories

A 2 1/2' x 2 1/2' CONCRETE STORM CULVERT ACCESS BOX, ITS SURFACE FLUSH WITH GROUND, IS MARKED WITH AN "X" AT THE NORTHWEST CORNER; BEARS S 78° E, 78.5 FT. DIST.

AN UNMARKED (DUE TO ITS ORNAMENTAL NATURE) 32" D.B.H. ATLAS CEDAR (C. ATLANTICA), BEARS S 56° W, 115° FT. DIST.

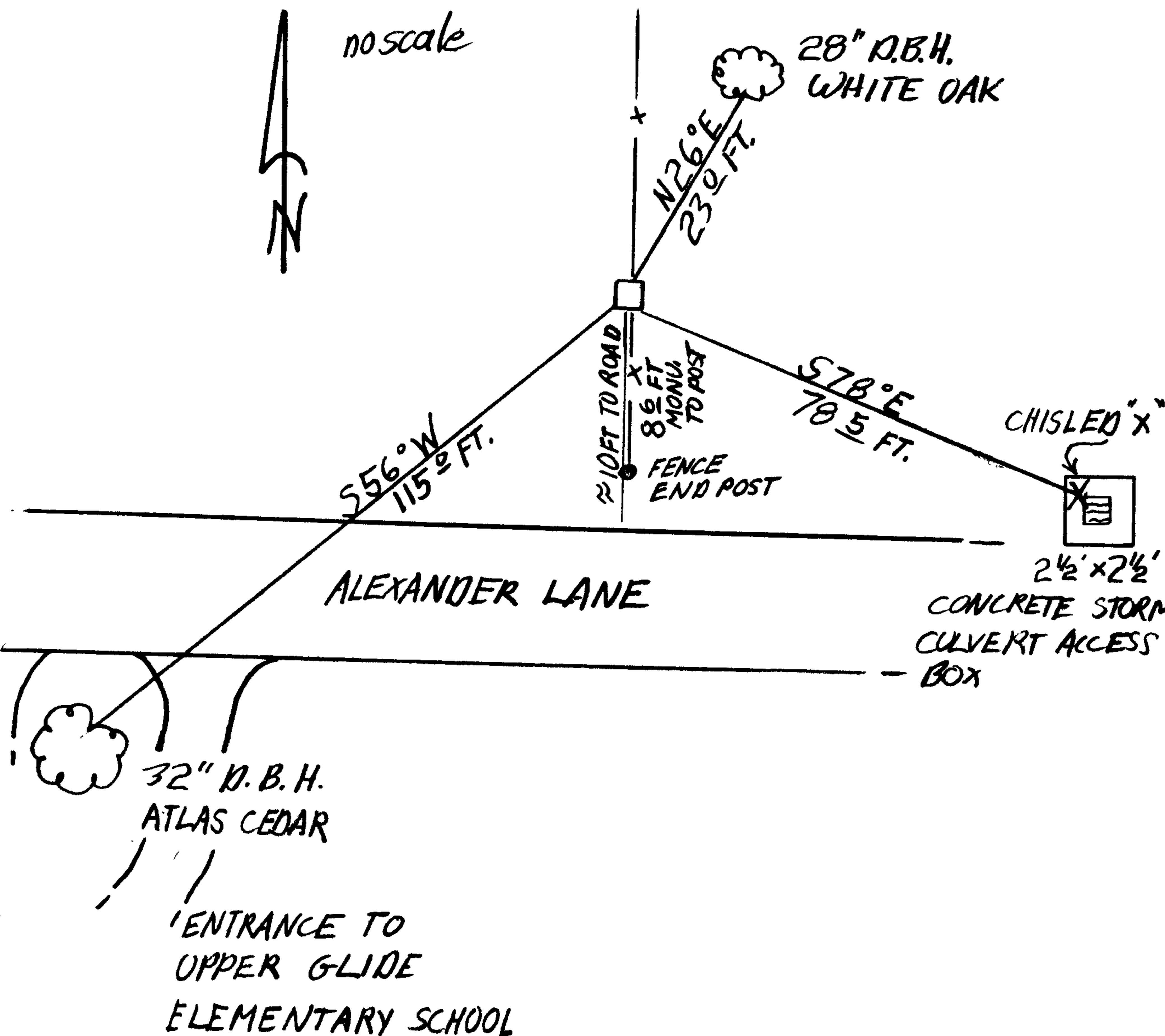
GALVANIZED STEEL END POST OF CYCLONE FENCE, SOUTH, 8.6 FT. DIST.

Sketch of Monument, Accessories, and General Area

Location & Comments

MONUMENT LIES APPROXIMATELY 10 FT. NORTH OF ALEXANDER LANE JUST NORTH-EAST OF REAR ENTRANCE TO GLIDE UPPER ELEMENTARY SCHOOL.

Comp. Declin. 18 1/2° E
 Agency DCSD
 Party Chief S.J. FLAUSE
 Notekeeper Stephen John Flause
 Witnesses R.W. SMITH



Surveyor's Seal

REGISTERED PROFESSIONAL LAND SURVEYOR

Harry E. Monrean

OREGON
 JULY 13, 1979
 HARRY E. MONREAN
 #1830