

GOVERNMENT CORNER RESTORATION FORM

Township 23S Range 5W Sec. 28 County DOUGLAS

State OREGON Date SEPT 7, 1984 No. _____

Corner Designation

NW COR
DLC 47

- _____ Condition Report Only
- _____ Not Found
- Renewed
- _____ Unrecorded
- _____ Surveyed In
- _____ Referenced Out

Previous Renewals #41

MONUMENT DETAIL

Monument(s) Found: (Condition and Source)

ORIGINAL STONE POST MONUMENT MEASURING 10x10x15 INCHES ON LONGEST SIDES (AS PER RECORD). STONE IS MARKED C 47 ON EAST FACE (AS NOTED IN RENEWAL #41) ALSO FROM RENEWAL #41 A 3/4 INCH DIAMETER IRON ROD FIRMLY SET AND PROTRUDING 15 INCHES FROM GROUND LIES ON NORTHEAST EDGE OF MONUMENT STONE.

Accessories Found:

REMAINS OF TWO ORIGINAL BEARING TREES: A 24 INCH W. OAK NOW A 48 INCH D.B.H. W. OAK BEARS S12°E, 146.9 FT. DISTANT (RECORD S12°E, 145.2 FT.; THIS WOULD BE A REASONABLE DISTANCE TO ORIGINAL FACE.); ALSO A 30 INCH B. OAK NOW A STUMP DEPRESSION, WITH A DOWN AND SEVERELY ROTTED OAK NEARBY, BEARS N25°E, 46.2 FT. DISTANT (AS PER RECORD)

FROM RENEWAL #41 TWO BEARING TREES: A 16 INCH R. FIR NOW A 28 INCH D.B.H. DOUGLAS FIR BEARS N71°E, 29.9 FT. DISTANT (AS PER RECORD) AND HAS A HEALED DOUBLE BLAZE WITH NO SCRIBING VISIBLE. ALSO A 6 INCH NOW AN 8 INCH D.B.H. WHITE OAK BEARS S36°E, 5.4 FT. DISTANT (AS PER RECORD) AND HAS A HEALED DOUBLE BLAZE WITH NO SCRIBING VISIBLE.

DCSO BRASS CAP FOR CORNER T23S R5W LIES NORTH 268.1 FT.

S20 | S21
S29 | S28

DISTANT (RECORD NORTH 271.9 FT. DISTANT).

#118X

C.S. File No. 62/21-6 C

RENEWAL

Monument Set (Procedure and Description)

Monument Detail

MEASUREMENTS FROM BEARING TREES IN RENEWAL #41 INDICATE THAT THE MOST NORTHERLY CORNER OF THE ORIGINAL STONE POST (THE POINT PROTRUDING HIGHEST FROM GROUND) MOST NEARLY FITS RECORD BEARINGS AND DISTANCES. ALSO THE 3/4 INCH DIAM. IRON ROD FROM RENEWAL #41 IS SET NEAREST TO HIGH POINT ON STONE.

THE ABOVE MENTIONED NORTHERLY CORNER OF THE ORIGINAL STONE POST IS REFERENCED OUT. THE STONE POST AND THE IRON ROD ARE REMOVED AND A DC SO BRASS CAP (MARKED AS AT RIGHT) ON A 1 3/8 INCH X 30 INCH LONG GALVANIZED IRON PIPE IS SET IN THE REFERENCED POSITION. THE BRASS CAP MONUMENT IS FIRMLY SET AND PROTRUDES 8 INCHES FROM GROUND. THE ORIGINAL STONE POST IS SET ON GROUND SURFACE ON EAST SIDE OF BC. THE 3/4 INCH DIAM. IRON ROD IS SET PROTRUDING 6 INCHES FROM GROUND ON WEST SIDE OF BC.

New Accessories

A 5 INCH D.B.H. DOUGLAS FIR SCRIBED "X BT" ON A DOUBLE BLAZE BEARS S63 1/2° W, 18.1 FT. DISTANT.

A 4 INCH D.B.H. DOUGLAS FIR SCRIBED "X BT" ON A DOUBLE BLAZE BEARS N68° W, 29.0 FT. DISTANT.

DOUGLAS COUNTY SURVEYORS

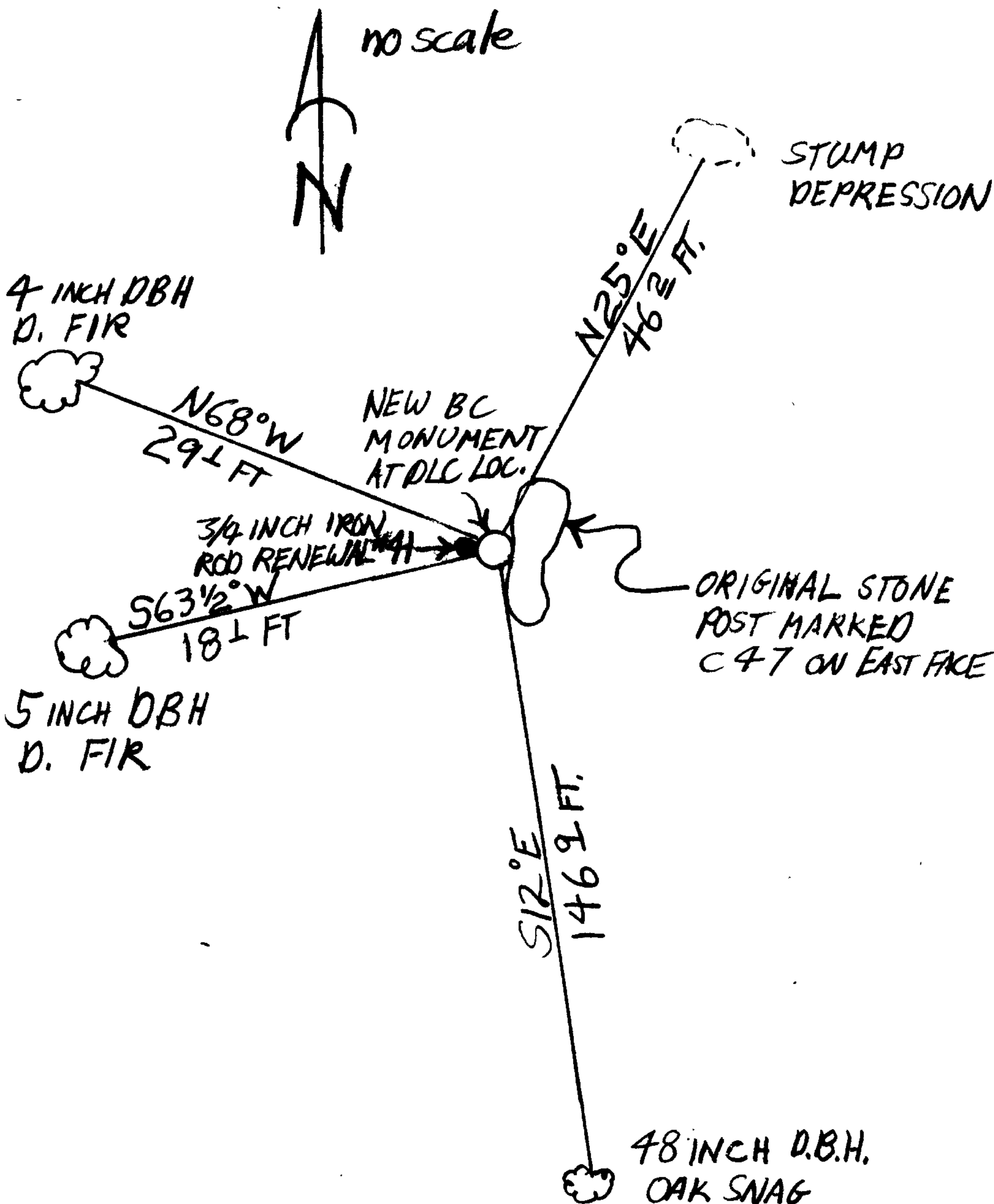
T23S R5W

NW COR

DLC 47

1984

Sketch of Monument, Accessories, and General Area



Location & Comments

CORNER LIES ON A GENTLE NORTH EAST SLOPE IN MIXED OAK AND FIR WOODS.

Comp. Declin. 18 1/2° E

Agency DC SO

Party Chief S.J. FLAISE

Notekeeper Stephen John Flaese

Witnesses R.W. SMITH

Surveyor's Seal

REGISTERED
PROFESSIONAL
LAND SURVEYOR

Larry E. Monrean
OREGON
JULY 13, 1979
LARRY E. MONREAN
#1830