

GOVERNMENT CORNER RESTORATION FORM

Township 23S Range 5W Sec. 20 County DOUGLAS

State OR Date 9/7/84 No. _____

Corner Designation

S20	S21
S29	S28

- Condition Report Only
- Not Found
- Renewed
- Unrecorded
- Surveyed In
- Referenced Out

Previous Renewals #83

Monument(s) Found: (Condition and Source)

A DCSO BRASS CAP ON A I.P. PROTRUDING 10 IN. ABOVE GROUND. MARKED AS NOTED. (PER REN#83).

MONUMENT DETAIL

COUNTY SURVEYOR'S OFFICE

T23S	R5W
S20	S21
S29	S28

Accessories Found:

26 IN. W. OAK NOW A DEPRESSION WITH A DOWN ^{AND} ROTTED TREE ALONG SIDE, BEARS N76°E, 144.5' (ORIG.)

16 IN. W. OAK NOW A 35" DIA. DEAD TREE WITH A PREVIOUSLY OPENED FACE, NO SCRIB FOUND, BEARS S71°W, 52.1' (ORIG.)

9 IN. NOW A 10 IN. DIA. D. FIR 2 1/2 FT HIGH SNAG WITH A PARTIALLY HEALED SINGLE BLAZE AND SCRIB W/ "RSW S21 CS BT" BEARS N59°E, 2.5 FT (PER REN#83).

13 IN. NOW A 17 IN. DIA. D. FIR WITH A WELL HEALED SINGLE BLAZE BEARS S19°E, 7.9 FT (PER REN#83).

A 14 IN. NOW A 20 IN. DIA. D. FIR BLOW DOWN WITH A WELL HEALED SINGLE BLAZE BEARS S49°W, 11.1 FT (REC. 271.1') (PER REN#83).

A 10 IN. NOW A 13 IN. DIA. D. FIR WITH A WELL HEALED SINGLE BLAZE BEARS N62°W, 23.4 FT (REC. 23.8') (PER REN#83).

A DCSO DISK STAMPED "T23S R5W [NW] COR DIC 47 1984" BEARS SOUTH, 268.1' (REC 271.9') BEARING TAKEN WITH A HAND COMPASS (PER ORIG. DIC NOTES OF THE NW COR DIC 47).

#119 X

RENEWAL

Monument Set (Procedure and Description)

Monument Detail

N/A

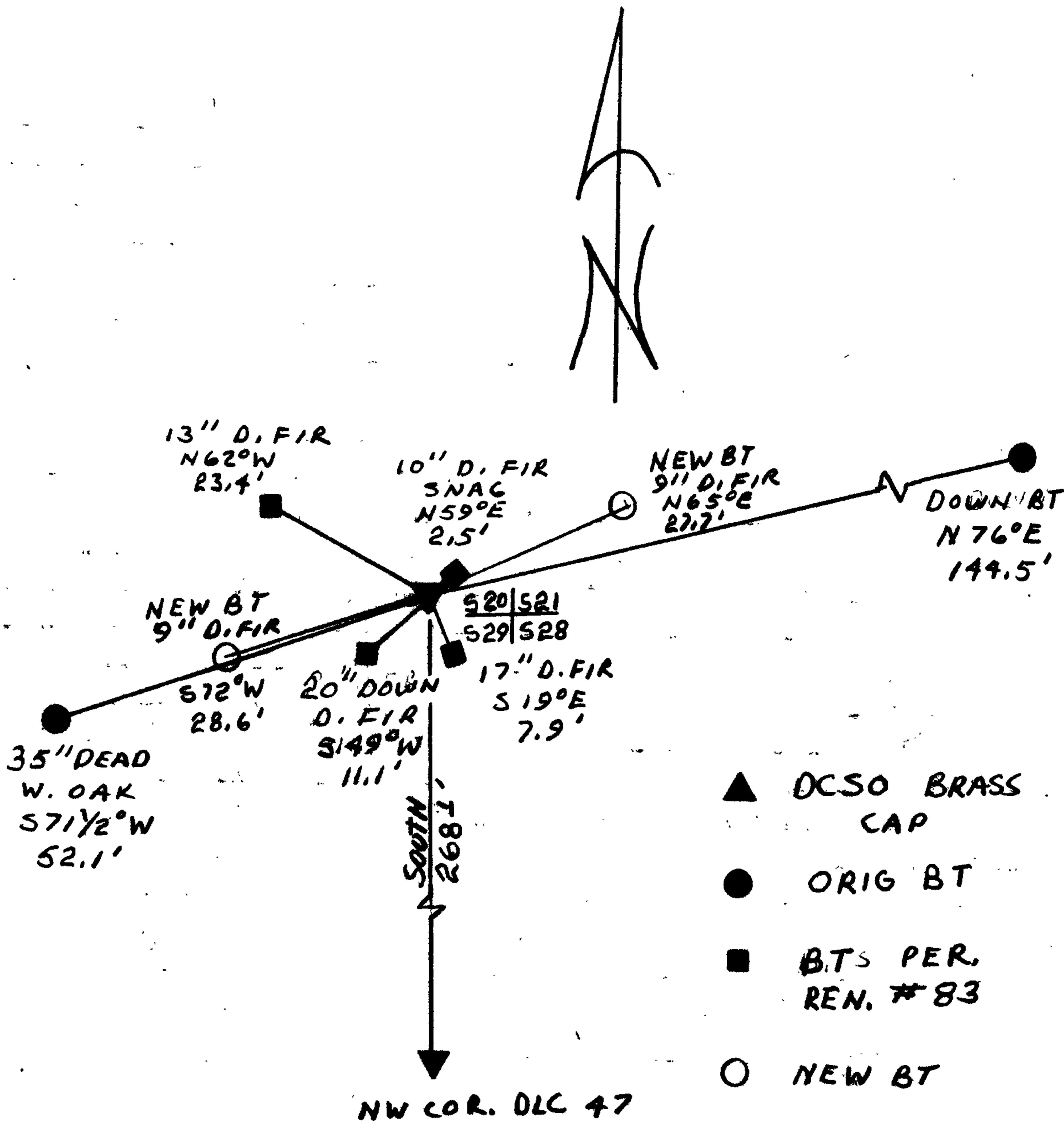
N/A

New Accessories

9 IN. DIA. D. FIR. DOUBLE BLAZED AND SCRIBED "T23S R5W S21 CS BT"
BEARS N65°E; 27.7 FT.

9 IN. DIA. D. FIR. DOUBLE BLAZED AND SCRIBED "T23S R5W S20 CS BT"
BEARS S72°W, 28.6 FT.

Sketch of Monument, Accessories, and General Area



Location & Comments

CORNER LIES ON A GENTLE NE SLOPE.

Comp. Declin. 18 1/2° E
Agency DCSO
Party Chief RANDALL W SMITH
Notekeeper Randall W Smith
Witnesses STEPHEN J FLAUSE

Surveyor's Seal

REGISTERED
PROFESSIONAL
LAND SURVEYOR

Larry E. Monrean

OREGON
JULY 13, 1979
LARRY E. MONREAN
#1830