

COUNTY OF DOUGLAS

OFFICE OF THE SURVEYOR
ROOM 205 - JUSTICE BUILDING
ROSEBURG, OREGON 97470

FILED
RECEIVED

APR 16 1984

COUNTY SURVEYOR
DOUGLAS COUNTY, ORE.

April 13, 1984

TO WHOM IT MAY CONCERN:

SUBJECT: Closing Corner, Sections 6 & 7, Township 20 South, Range 10 West, W.M.

On April 2, 1984, I visited this corner location with Don Peel, Jim Prochnau, and Dick Chesebro. This visit was requested to review the evidence of the noted closing corner. During this visit, Don Peel related considerable information concerning the evidence of the closing corner monument. As this information does not appear on his survey map for Davidson Industries, Inc., dated May 6, 1983, I asked that he send a narrative of this information to the Douglas County Surveyor's Office. This information was received April 13, 1984 (copies enclosed). I was shown the stone believed to be the original corner monument found by Peel. I was not able to determine definitely that the marks on the stone were those placed by the original surveyor.

Mr. Peel's letter and observation of the area point out the following for consideration. The stone being nearly record size was found to be in an upright position, partially below ground level. The stone was located in a mound or "concentration" of stones more than one stone deep. These conditions do not appear natural to the conditions in the immediate area. The marks on the stone do not appear to be caused by natural conditions. The location of the stone in relation to the concentration of stone was not centered--original notes call for a mound of stones alongside the original monument. The position of this evidence is in a reasonable proximity of the original corner position when comparing Peel's information to the original bearing and distance to the standard corner to the north.

Considering the evidence, I believe the position monumented by Don Peel is the closing corner to Sections 6 & 7, Township 20 South, Range 10 West, W.M.

REGISTERED
PROFESSIONAL
LAND SURVEYOR

OREGON
JULY 13, 1979
LARRY E. MONREAN
#1830

I agree with the above conclusion.

cc: Don Peel
James W. Prochnau
James M. Griffis
Dick Chesebro

REGISTERED
PROFESSIONAL
LAND SURVEYOR

OREGON
JULY 11, 1969
FRANCIS L. INGRAM
902

C.S. File No. 62/19

PEEL BAKER LAND SURVEYING, INC.

1262 Lawrence Street, Suite 4
EUGENE, OREGON 97401
Telephone: (503) 343-7243

Home Telephones:
Don Peel, PLS 344-1828
Dan Baker, PLS 484-2734

April 10, 1984

FILED

RECEIVED

BS

APR 13 1984

Mr. Ed Monrean
Douglas County Surveyors Office
Room 205--Justice Building
Roseburg, OR 97470

COUNTY SURVEYOR
DOUGLAS COUNTY, ORE.

SUBJECT: Closing corner 6 & 7, T20S, R10W, W.M.

Dear Ed:

The following narrative relates to when and what evidence I found at the closing corner of Sections 6 & 7, T20S, R10W, W.M.

NARRATIVE:

On February 9, 1982, Glen McChesney (Weyerhaeuser Co.--retired) and I went to the Standard Corner of Sections 1, 12, T20S, R11W, W.M. to initiate a search for the corners on the south of Sections 1 and 2. At this time we noted that the so-called Northwesterly B.T. (4" fir, N21W, 47 lks), now an uprooted and downed 36" (approx.) fir, was actually much farther from the corner, as monumented by J. Prochnau, than the record distance. Failing to find any evidence of original corners along the south lines of Sections 1 and 2, I decided to saw into both the fir and the maple B.T. (8" maple, N45E, 30 lks) at the Standard Corner of 1 and 12, to verify the position of the Prochnau monument. At this time I asked the U.S. Forest Service if they could send along a registered surveyor to witness any marks that might or might not be found. On March 19, 1982, Dick Chesebro (U.S.F.S.), Larry Hunnemuller (U.S.F.S.) and I cut down the maple and sawed off several chunks but found no scribing. We tried to cut into the fir, but with the small saw we had it became too dangerous. On December 27, 1982, Dick Chesebro (U.S.F.S.), Glenn Sykes (U.S.F.S.), a cutter from Davidson Industries, and I returned with a larger saw to cut into the fir. We managed to get the fir down into a safer position and opened it, but found no scribing. At this time we decided to measure south to try and find the closing corner for Sections 6 and 7. Approximately 20 feet south and 5 or 6 feet west of the point we initiated our search from, I found a stone in an upright position. The stone was leaning a little south (from plumb) and the side that was later determined to have the "CC" on it was facing approximately S20°E. After removing the fern and other ground vegetation in the immediate area of the stone, I noticed that there was a concentration of stones in a circular pattern about 4 feet in diameter. This concentration of stones was basically west of the upright stone (see enclosed diagram). I removed the upright stone for a closer examination and at that time did not see the letters "CC". I did see what I thought could possibly be a groove on the

C.S. File No. 62/12

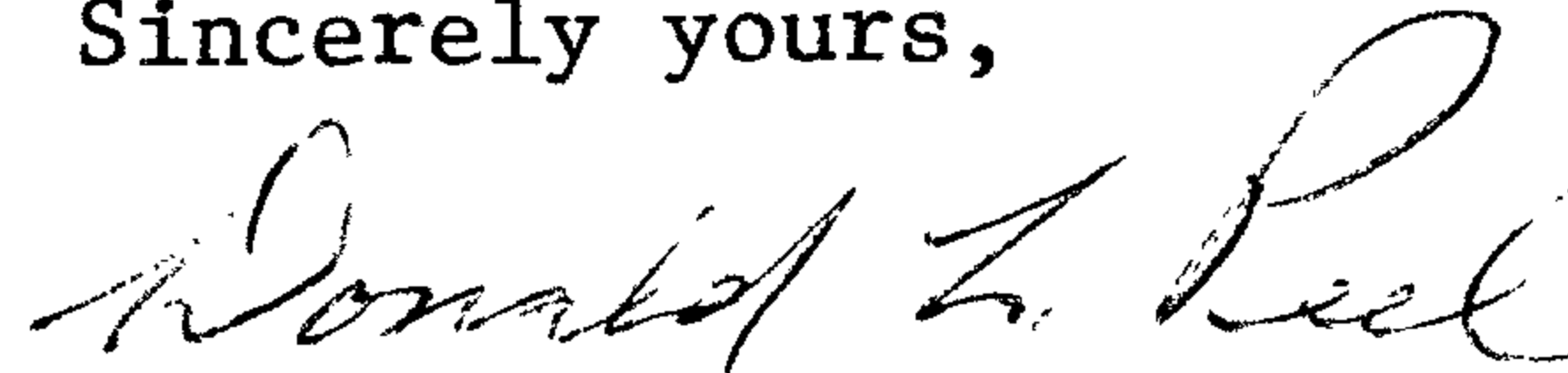
Ed Monrean
Closing corner 6 & 7, T20S, R10W, W.M.--Narrative
April 10, 1984
page 2

south face. I then started examining the other stones in the "concentration" for marks and noticed that they were layered several stones thick. At this time I felt that with the upright stone, along with the concentration of stones to the west, this was probably the corner position. However, by not recognizing any definite marks on the stone, I continued my search elsewhere. After several more hours, we stopped the search. On December 28, 1982, Chesebro, Sykes and I went to the Closing Corner of Sections 7 and 18 (a mile south) and found the original stone laying beside the Douglas Co. monument. Chesebro made the comment that the markings on that stone were exactly like the ones he had noticed on the upright stone I had found the day before. We decided to return to the upright stone for another examination of said stone. Upon our return, at a distance of 8 to 10 feet from said stone, the letters "CC" were clearly visible. At this time I was convinced that this was indeed the closing corner. On January 11, 1983, I returned with Dan Baker to monument the corner with a U.S.F.S. aluminum monument. We took several photographs of the markings on the stone and also measured the stone and found it to be 10" x 7" x 7". I then wrapped the stone in a blue plastic bag and buried it beside the monument. Since that date, the stone has been dug up and buried at least three different times. At our meeting on April 2, 1984, I had a chance to see the stone again. It has slacked off some more, cracked, and has been covered with a blue chalk which has made it very difficult to see the markings once visible.

Enclosed you will find several diagrams showing what I found.

In my professional opinion, the upright stone I found was the original Closing Corner as established by N. Martin in 1894.

Sincerely yours,



Donald L. Peel
PLS 752

Enc.

FILED
RECEIVED *BS*

APR 13 1984

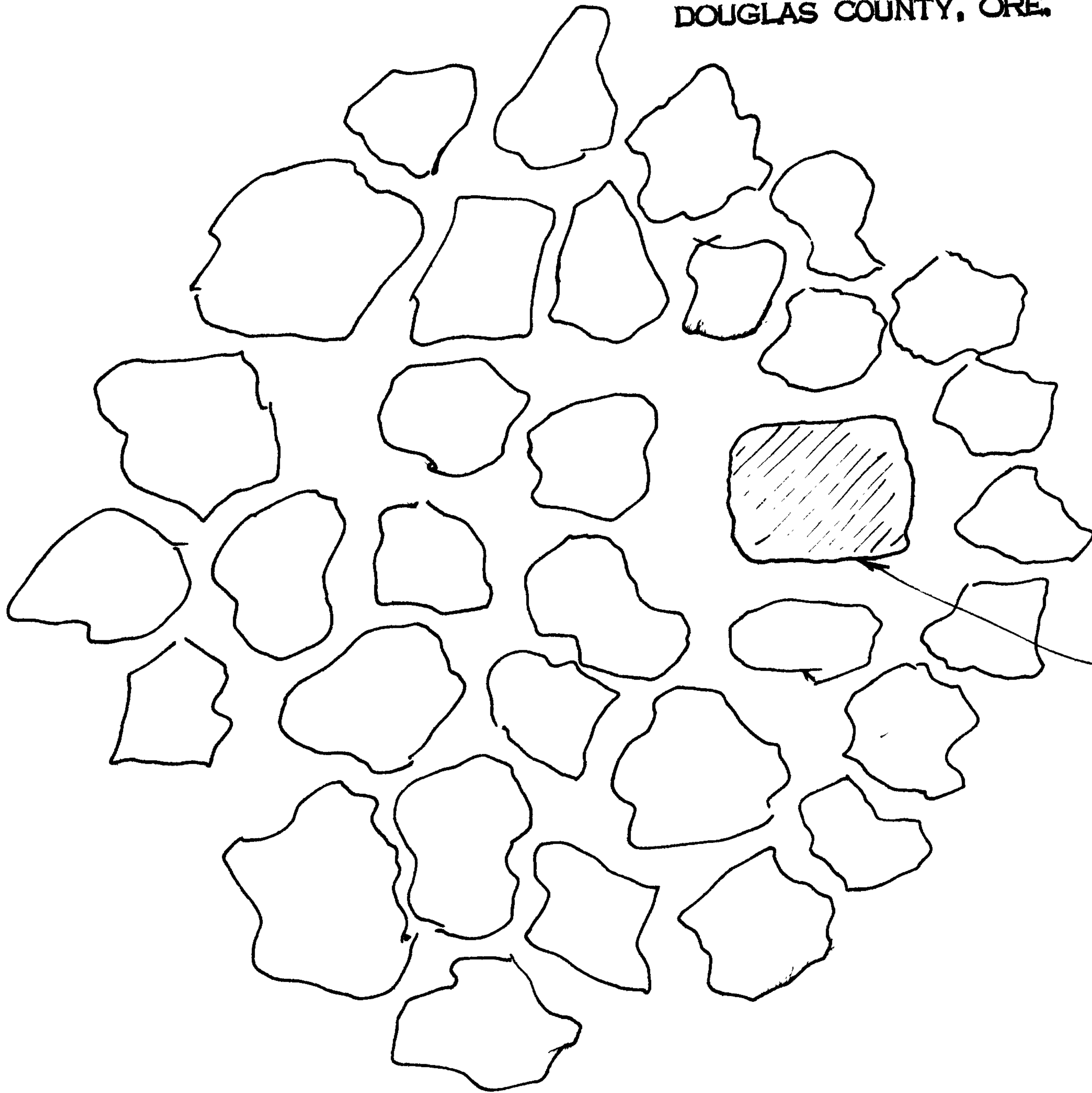
COUNTY SURVEYOR
DOUGLAS COUNTY, ORE.

C.S. File No. 62/19

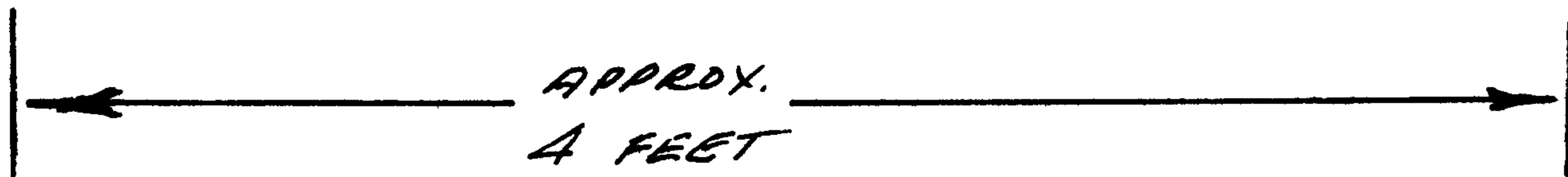
FILED
RECEIVED *BS*

APR 13 1984

COUNTY SURVEYOR
DOUGLAS COUNTY, ORE.



MARKINGS
THIS SIDE

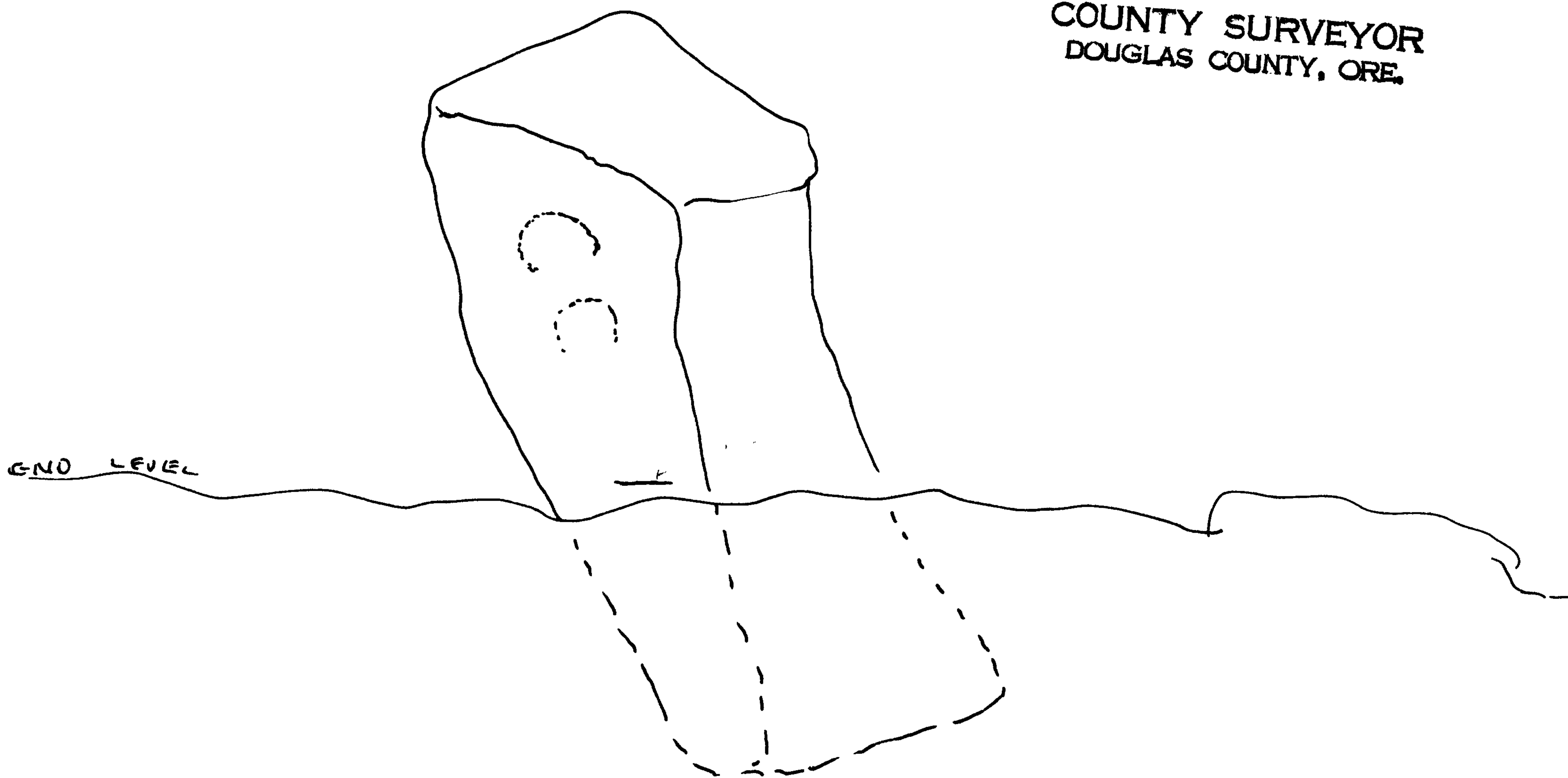


C.S. File No. 62/19

FILED
RECEIVED *BL*

APR 13 1984

COUNTY SURVEYOR
DOUGLAS COUNTY, ORE.



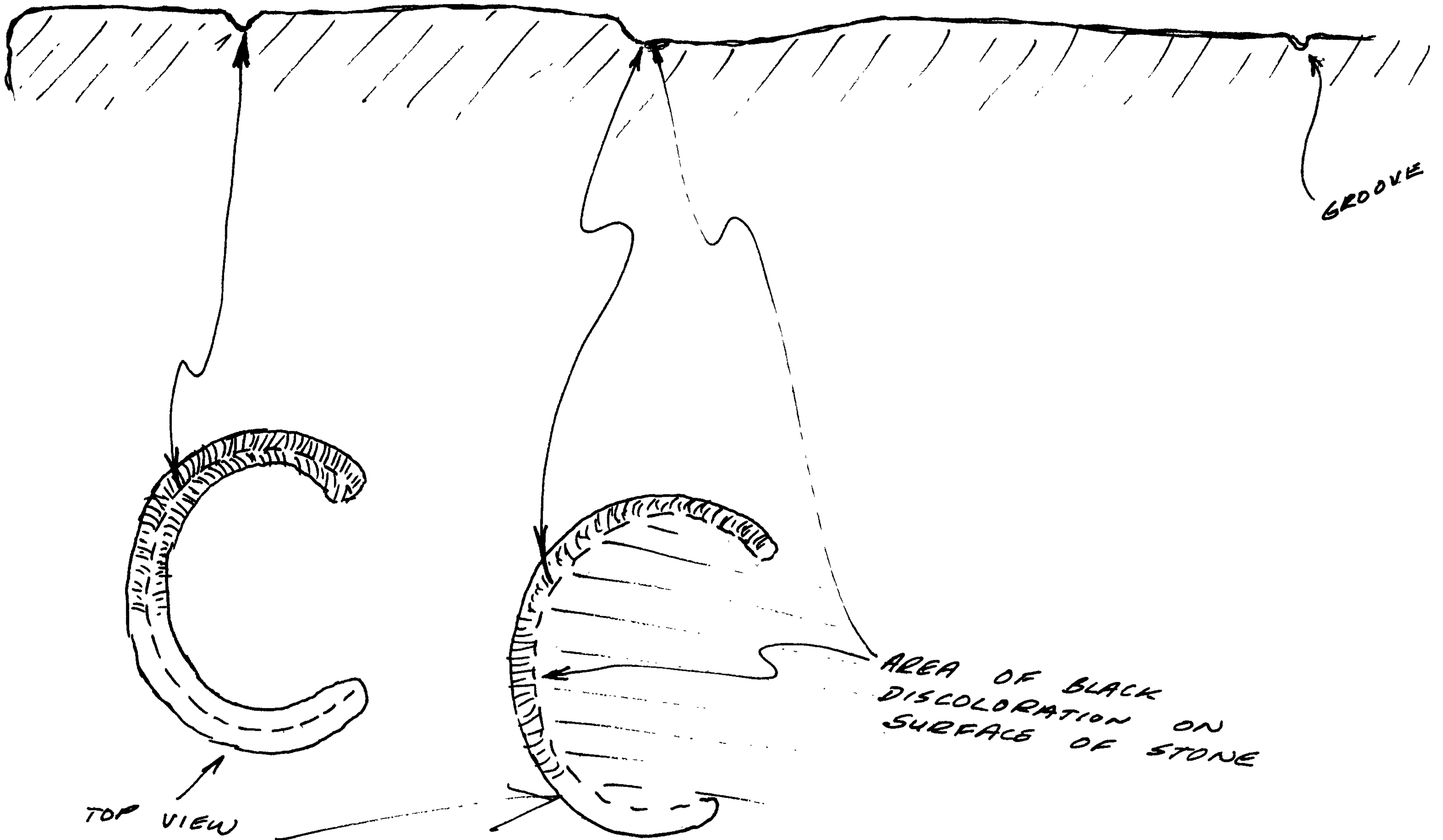
C.S. File No. 62/19

FILED
RECEIVED *BS*

APR 13 1984

COUNTY SURVEYOR
DOUGLAS COUNTY, ORE.

CUT AWAY VIEW OF
SOUTH FACING SIDE OF
STONE

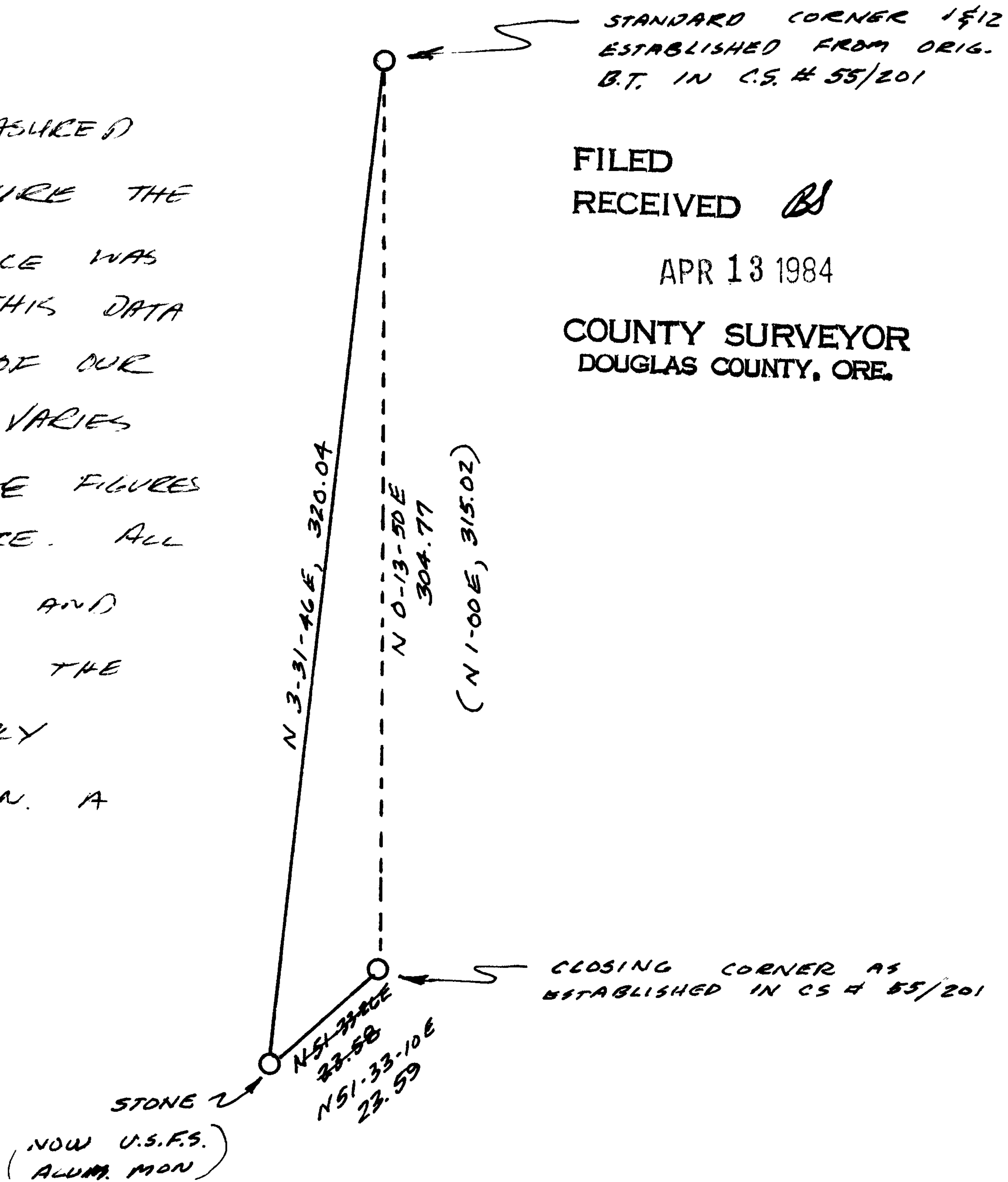


C.S. File No. 62/19

ED:

MONDAY I REMEASURED THIS TO MAKE SURE THE DISTANCE DIFFERENCE WAS NOT ON ME - THIS DATA IS THE RESULTS OF OUR REMEASURE - IT VARIES SLIGHTLY FROM THE FIGURES I GAVE YOU BEFORE. ALL OF THE DIGGING AND BURYING AROUND THE C.C. HAS PROBABLY SHIFTED THAT MON. A LITTLE.

- Don -



C.S. File No. 62/19

20-10 CC $\frac{16}{7}$
 4-13-84
 JEM

BLOCK	LOT	BEARING	DISTANCE	LATITUDE	DEPARTURE	NORTH	EAST	PT
						1000.000	2000.000	1
		NORTH	297.000	297.000	0.000	1297.000	2000.000	2
		S 3 31' 46" W	320.040	319.432	19.702	977.567	1980.297	3
ERROR OF CLOSURE IS 1 PART IN 20 S 41 17' 30" W 29.856 - 22.432 - 19.702 AREA = 3146 SQ FT OR 0.07 ACRES								

ORIG. B/D
 PEEL B/D

1 CC
 2 $\frac{1}{12}$ STANDARD COR
 3 CL

FILED
 RECEIVED *BS*
 APR 13 1984
 COUNTY SURVEYOR
 DOUGLAS COUNTY, ORE.

SEE PICTURES IN FILE