

GOVERNMENT CORNER RESTORATION FORM

Township 30S Range 6W Sec. 1 County DOUGLAS

State OREGON Date 6/8/84 No. _____

Corner Designation

S1
S12

- Condition Report Only
- Not Found
- Renewed
- Unrecorded
- Surveyed In
- Referenced Out

Previous Renewals ^{T.30-6} #19, ^{#226} #140, ^{T.30-5} #205, #279

Monument(s) Found: (Condition and Source)

MONUMENT NOT LOOKED FOR,
CORNER LIES IN A WHEAT FIELD.

Accessories Found:

- 8" NOW A 13" W. OAK WITH WELL HEALED DOUBLE BLAZE
(PER REN. #205).
- 12" NOW A 14" DEAD B. OAK WITH PARTIALLY HEALED DOUBLE BLAZE
(PER REN. #305).
- A 3/4" I.R. PROTRUDING 16 IN. ABOVE GROUND 1.5 FT
NORTHWEST OF SPRR R/W FENCE.
- A 1 1/2" X 1 1/2" X 98" ANGLE IRON PROTRUDING 2 FT ABOVE GROUND
IN SPRR R/W FENCE.
- 2" HIGH LETTERS "X 80" CHISELED ON FACE OF EASTERLY
CULVERT HEADWALL UNDER SPRR TRACKS.

RENEWAL

Monument Set (Procedure and Description)

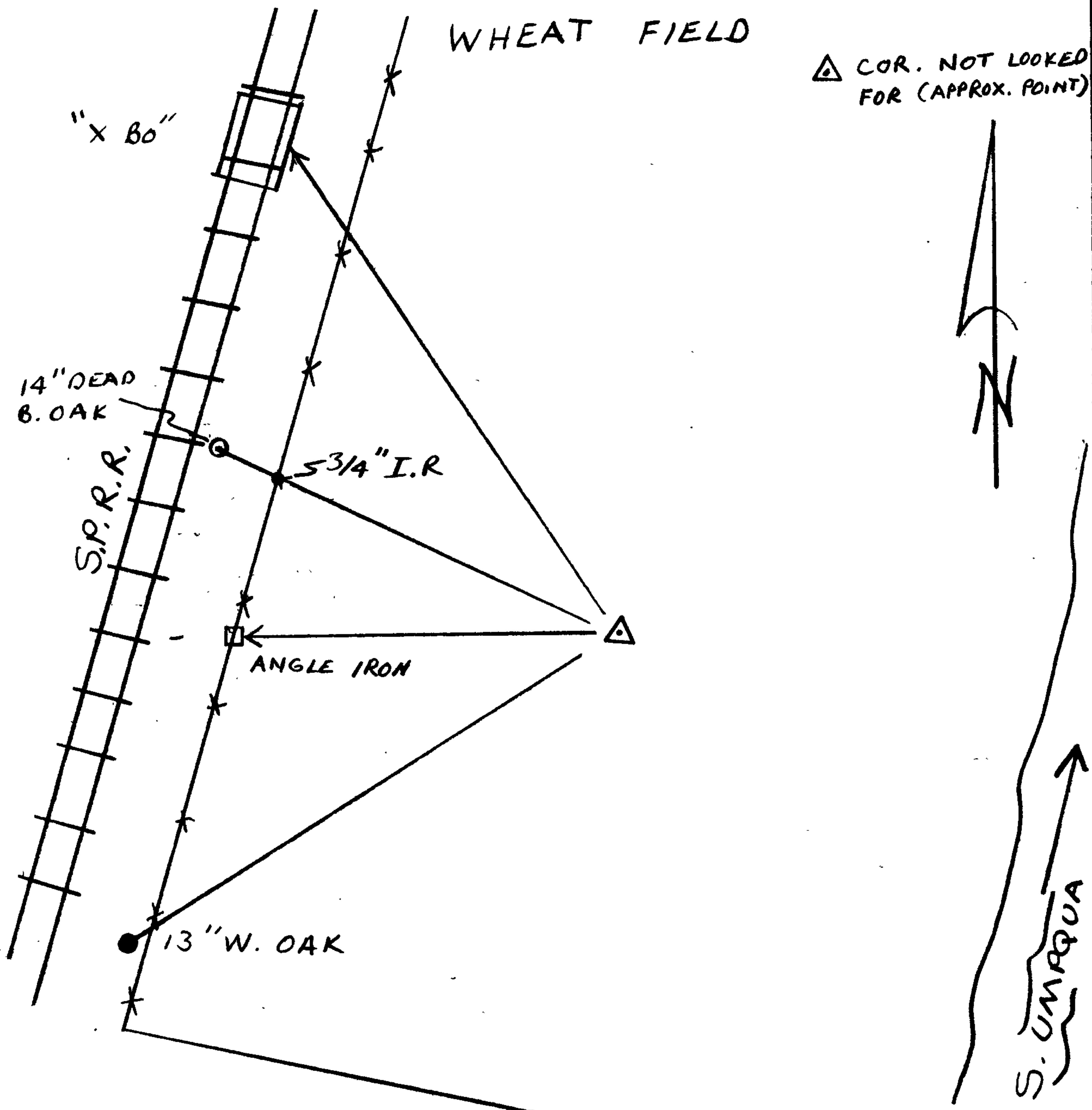
NONE

Monument Detail

New Accessories

NONE

Sketch of Monument, Accessories, and General Area



Location & Comments

COR. LIES IN A WHEAT FIELD

Comp. Declin. N/A
Agency DCSO
Party Chief RANDALL W. SMITH
Notekeeper Randall W. Smith
Witnesses STEPHEN FLAUSE
ok/jm

Surveyor's Seal