

GOVERNMENT CORNER RESTORATION FORM

Township 30 Range 5W Sec. 19 County DOUGLAS

State OREGON Date 6/7/84 No. _____

Corner Designation

S19 | S20

- Condition Report Only
- Not Found
- Renewed
- Unrecorded
- Surveyed In
- Referenced Out

Previous Renewals #11, #36, #161 BLM 1969 DEPENDENT

Monument(s) Found: (Condition and Source)
A DC50 DISK ON A I.P. PROTRUDING
19" ABOVE GROUND, MARKED AS NOTED

RESURVEY
M 18-35

MONUMENT DETAIL

COUNTY SURVEYORS OFFICE

T30S R5W

S19 | S20

1/4
1960

Accessories Found:

A 25" B. OAK WITH A DOUBLE HEALED BLAZE
BEARS N 68 1/2° E, 46.2 FT (PER REN # 11).

A 12" NOW A 14" DIA. B. OAK WITH DOUBLE HEALED BLAZE
BEARS N 25 1/2° W, 37.9 FT (PER REN # 161).

12" PINE NOW A ROOT HOLE BEARS N 33° E, 24.8 FT
PER. REN. # 36

14" NOW A DOWNED MADRONE WITH VISIBLE SCRIBING
"1/4 S20 (S RT)", ROOT HOLE BEARS N 62° E, 28.0 FT
NOT SURE OF ORIGIN, FIRST SHOWED UP IN REN. # 161.

RENEWAL

Monument Set (Procedure and Description)

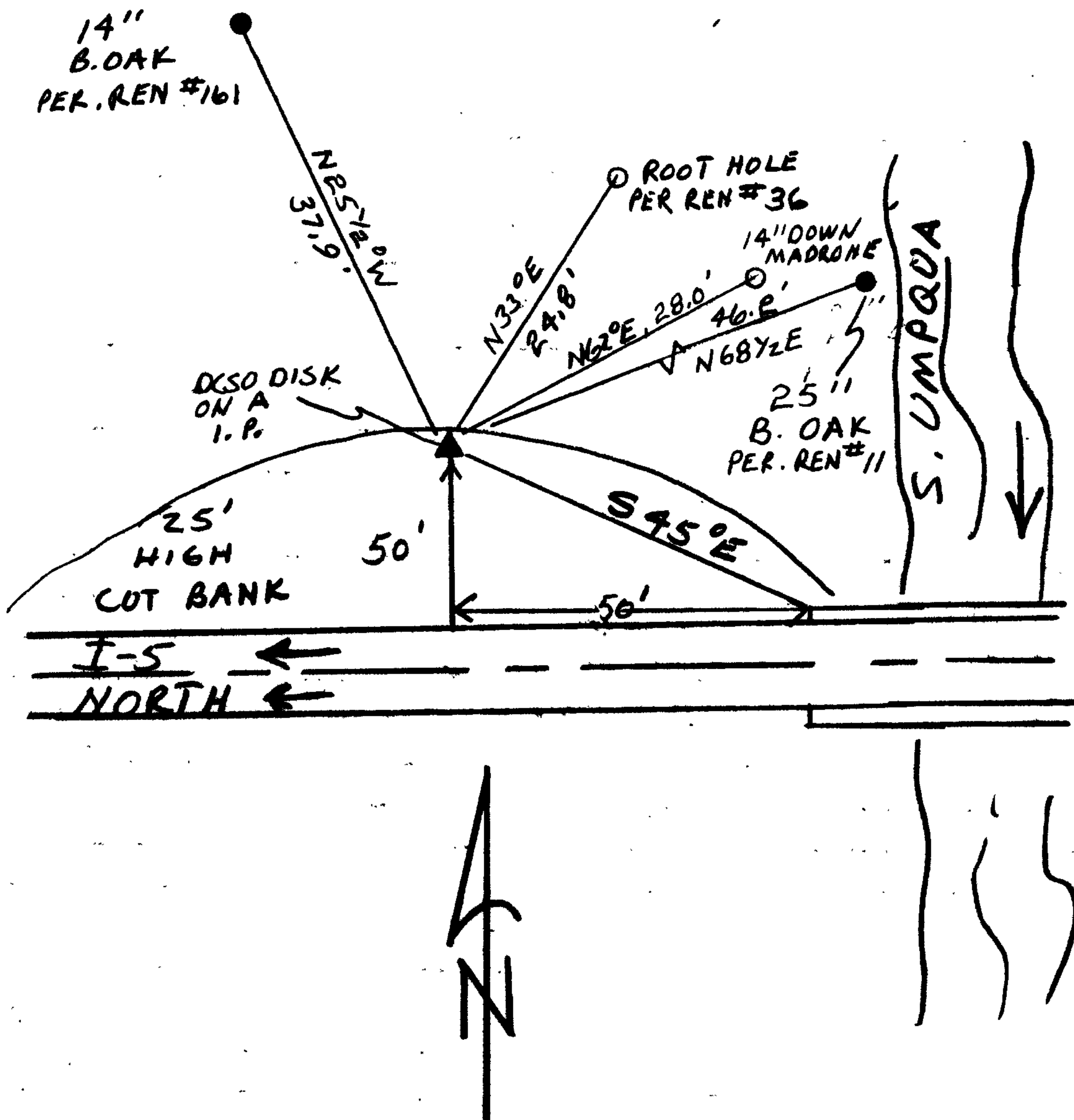
NONE

Monument Detail

New Accessories

NONE

Sketch of Monument, Accessories, and General Area



Location & Comments

COR. IS NEAR I-5 BRIDGE
OVER S. UMPQUA RIVER. BETWEEN
CANYONVILLE AND TRI-CITY.

Comp. Declin. 18 1/2° E
Agency DLSO
Party Chief RANDALL W SMITH
Notekeeper Randall W Smith
Witnesses STEPHEN FLAUSE

Surveyor's Seal

REGISTERED
PROFESSIONAL
LAND SURVEYOR

Larry E. Monrean

OREGON
JULY 13, 1979
LARRY E. MONREAN
#1830