

GOVERNMENT CORNER RESTORATION FORM

Township 30S Range 5W Sec. 6 County DOUGLAS

State OREGON Date 6/8/84 No. \_\_\_\_\_

Corner Designation

S6
S7

- Condition Report Only
- Not Found
- Renewed
- Unrecorded
- Surveyed In
- Referenced Out

Previous Renewals #28, #39, #204, #280

Monument(s) Found: (Condition and Source)

MONUMENT NOT LOOKED FOR,  
CORNER LIES IN A WHEAT FIELD.

Accessories Found:

11" NOWA 18" DIAM. 2 FT HIGH B. OAK STUMP (PER REN#204).

20" NOWA 22" W. OAK WITH A WELL HEALED BLAZE, (PER, REN#39).

12" NOWA 18" B. OAK WITH PREVIOUSLY OPENED BLAZE SHOWING  
VISIBLE SCRIBING "S7 T30 5" (PER REN# 39)

10" B. OAK (PER REN#39) IS PROBABLY THERE, FOUND A TREE SHOWING  
FAINT SCAR AND DIAMETER. SIZE OF NW TREE FOUND PER REN#280.  
TREE IS ALONG FENCE LINE AND HAS FENCING ATTACHED TO TRUNK.

RENEWAL

Monument Set (Procedure and Description)

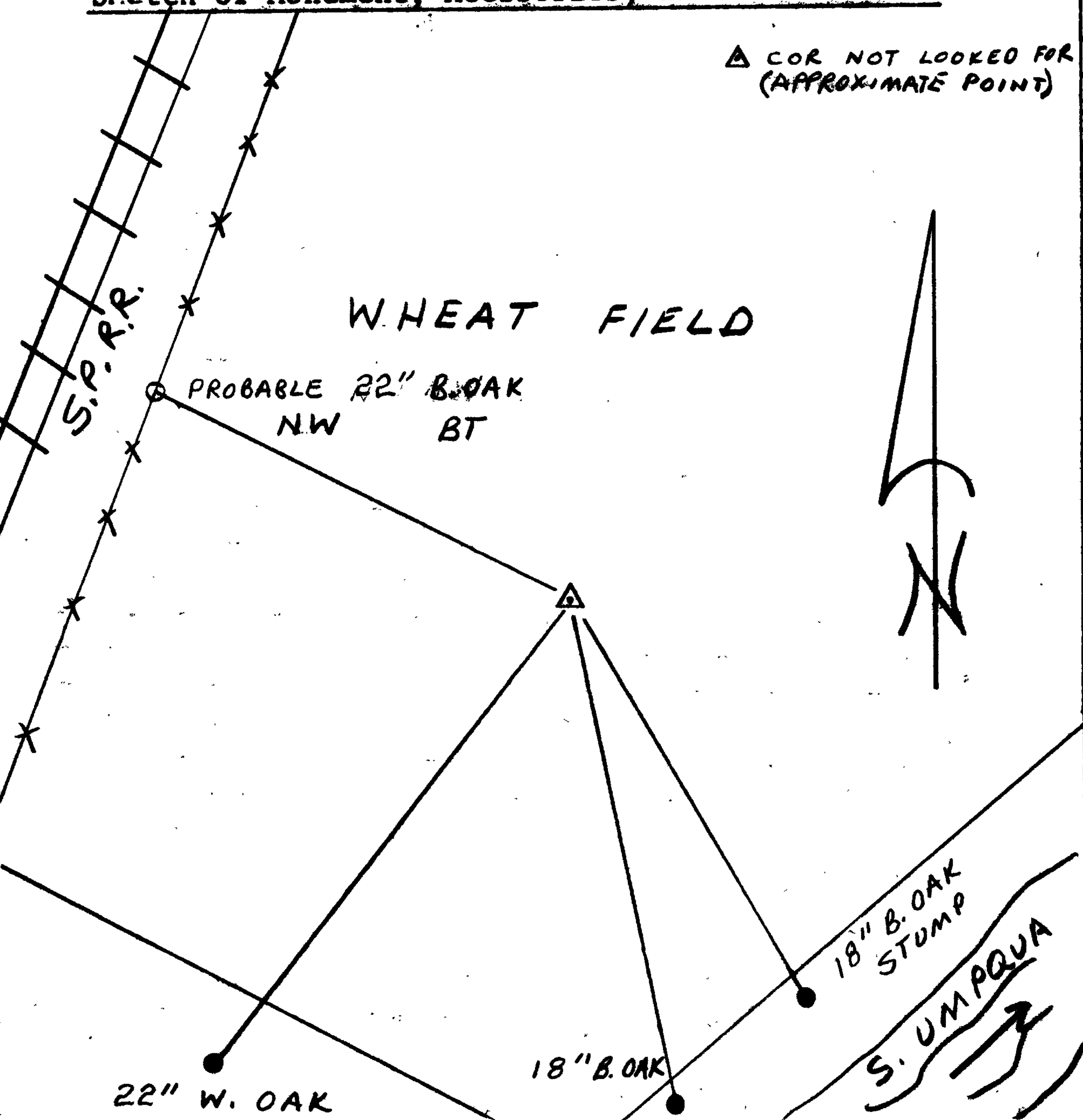
NONE

Monument Detail

New Accessories

NONE

Sketch of Monument, Accessories, and General Area



Location & Comments

COR LIES IN A WHEAT FIELD.

Comp. Declin. N/A  
Agency DCSO  
Party Chief RANDALL W. SMITH  
Notekeeper Randall W. Smith  
Witnesses STEPHEN FLAUSE

Surveyor's Seal

REGISTERED PROFESSIONAL LAND SURVEYOR

*Larry E. Monrean*

OREGON  
JULY 13, 1979  
LARRY E. MONREAN  
#1830