

GOVERNMENT CORNER RESTORATION FORM

Township 29S Range 7W Sec. 20 County DOUGLAS

State OREGON Date JUNE 7, 1984 No. \_\_\_\_\_

Corner Designation

WNW  
DLC  
46

- Condition Report Only
- Not Found
- Renewed
- Unrecorded
- Surveyed In
- Referenced Out

Previous Renewals 69, 146, 257

MONUMENT DETAIL

Monument(s) Found: (Condition and Source)

A 2 INCH IRON PIPE, FIRMLY SET AND PROTRUDING 5 INCHES FROM GROUND; PIPE LEANS SLIGHTLY NORTH. THIS MONUMENT POSSIBLY SET BY BOYER IN 1943 SEE CS, 31/15.

Accessories Found:

NO TRACE OF ORIGINAL BEARING TREES.

A TRIPLE TRUNK D. FIR APPROX. 50 INCHES IN OVERALL DIAMETER WITH A HEALED SINGLE BLAZE BEARS S89°E, 121.0 FT. (REC. N89°E, PER REN. #69 AND N86½°E, PER REN. #146 AND S87°E, PER REN. #257.)

A 21 INCH D.B.H. NOW A 26 INCH D.B.H. P. PINE WITH A HEALED DOUBLE BLAZE IS NOW DEAD, FALLEN AND DISLOCATED FROM STUMPHOLE. STUMPHOLE BEARS N31°E, 89.4 FT AS PER REN. #146 AND REN. #257.

A 12 INCH D.B.H. NOW A 14 INCH D.B.H. P. PINE WITH A HEALED DOUBLE BLAZE BEARS N53°W, 14.9 FT. AS PER REN. #257.

\*277 X

C

RENEWAL

Monument Set (Procedure and Description)

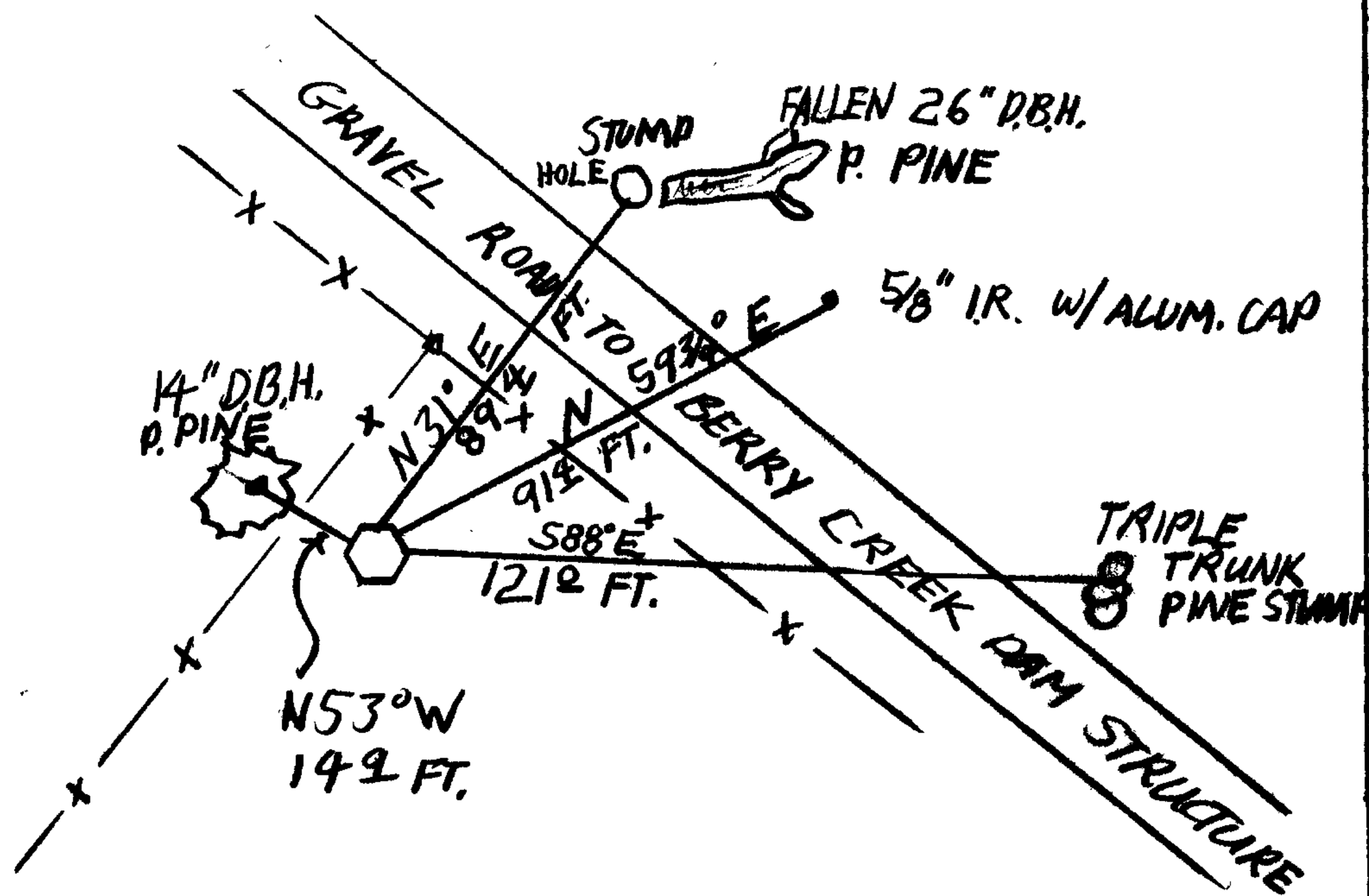
NONE

Monument Detail

New Accessories

A 5/8 INCH DIAMETER IRON ROD WITH AN ALUMINUM CAP MARKED "DOUGLAS CO. RD. OPT. R/W .30" FIRMLY SET AND PROTRUDING 4 INCHES FROM GROUND BEARS N59 3/4° E, 91.4 FT. DISTANT.

Sketch of Monument, Accessories, and General Area



Location & Comments

MONUMENT IS LOCATED APPROX. 400 FT. NW OF UPPER OLLALA RD. (CO. RD # 38) AND 50 FT. SOUTHWEST OF GRAVELLED ACCESS ROAD TO BERRY CREEK DAM STRUCTURE (BEN B. IRVING RESERVOIR).

Comp. Declin. 18 1/2° E  
Agency DCSO  
Party Chief S. FLAUSE  
Notekeeper S. FLAUSE  
Witnesses R. SMITH

Surveyor's Seal

REGISTERED PROFESSIONAL LAND SURVEYOR

Larry E. Monrean

OREGON JULY 13, 1979 LARRY E. MONREAN #1830