

GOVERNMENT CORNER RESTORATION FORM

Township 28S Range 6W Sec. 13 County DOUGLAS

State OR Date 8/1/84 No. \_\_\_\_\_

Corner Designation

S14	S13
S23	S24

- Condition Report Only
- Not Found
- Renewed
- Unrecorded
- Surveyed In
- Referenced Out

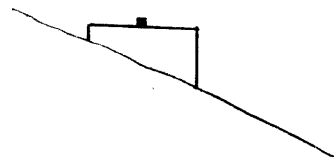
Previous Renewals #49, #53

Monument(s) Found: (Condition and Source)

18" X 18" CONCRETE BLOCK  
6" ABOVE GROUND WITH A 3/4" I.R.  
PROTRUDING 2" FROM CENTER OF  
CONCRETE BLOCK. (PER REN#49).

SEE LOCATION AND COMMENTS

MONUMENT DETAIL



Accessories Found:

7" NOWA 8" W. OAK WITH A WELL HEALED DOUBLE BLAZE  
BEARS N5°E, 15.7 FT (REC. 16.8 FT IS A SLOPE DIST. TO  
CENTER OF TREE FACE HIGHT). PER REN# 49.

6" NOWA 9" W. OAK WITH A WELL HEALED SINGLE BLAZE  
BEARS N80°W, 27.0 FT (REC. N76°W). PER REN# 49.

3" NOWA 7" B. OAK TREE CUT INTO AND NO SCRIBING FOUND.  
BEARS S13°E, 14.0 FT. (REC. S5°E, 13.7 FT) PER REN# 49.

#1664

RENEWAL

Monument Set (Procedure and Description)

NONE

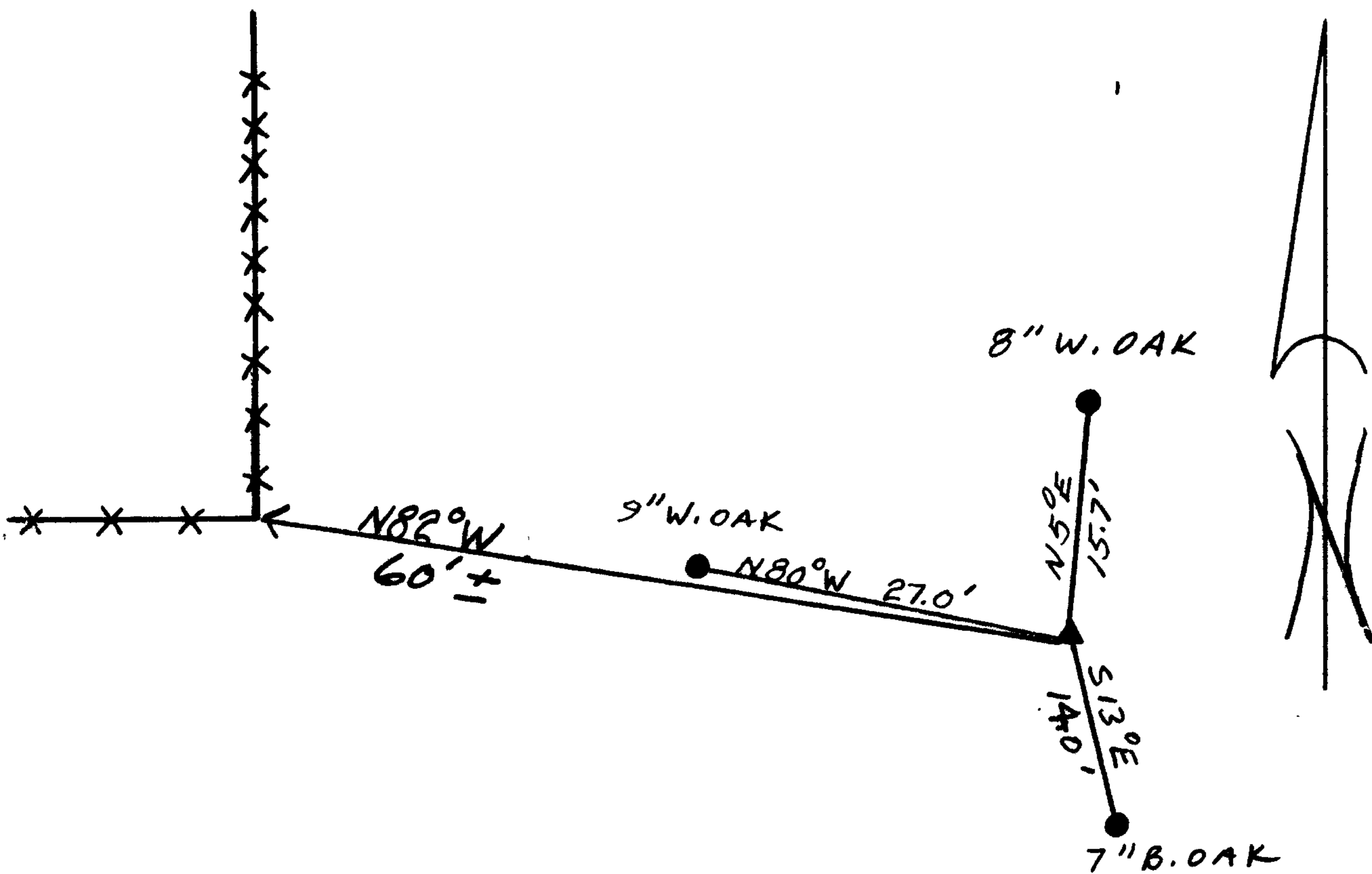
Monument Detail

N/A

New Accessories

NONE

Sketch of Monument, Accessories, and General Area



Location & Comments

MONUMENT LIES APPROX. 150 FT SOUTH OF CO. RD. #16 AND APPROX 165 FT WEST OF T-S.

THIS MONUMENT WAS SET BY A METHOD OTHER THAN RECOMMENDED BY THE BLM MANUAL.

Comp. Declin. 18 1/2° E  
Agency DCSO  
Party Chief RANDALL W SMITH  
Notekeeper [Signature]  
Witnesses STEPHEN J FLAUSE

Surveyor's Seal

REGISTERED  
PROFESSIONAL  
LAND SURVEYOR

[Signature]

OREGON  
JULY 13, 1979  
BARRY E. MONREAN  
#1830