

R,

GOVERNMENT CORNER RESTORATION FORM

Township 285 Range 6W Sec. 11 County DOUGLAS

State OR Date 7/27/84 No. _____

Corner Designation

S11	S12
S14	S13

- Condition Report Only
- Not Found
- Renewed
- Unrecorded
- Surveyed In
- Referenced Out

Previous Renewals 129-A

Monument(s) Found: (Condition and Source)
A 3/4" I.R. 18" BELOW GROUND
(PER REN # 129-A)

MONUMENT DETAIL

N/A

Accessories Found:

A 7 FT HIGH AND 8 FT X 16 FT ROCK OUTCROP, EAST
POINT BEARS N12°W, 846.12 FT (PER ORIGINAL GLO NOTES).

A 3/4 IN. I.R. PROTRUDING 6 IN ABOVE GROUND AND 6 IN.
WEST OF EAST R/W FENCE OF T-S, BEARS N88 3/4°E, 165.49 FT
(REC. S89°50'E, 165.62 FT PER REN. #129-A).

PK NAILS PER REN #129-A NOT FOUND PROBABLY LOST
DUE TO AC OVERLAY ON T-S.

#164 X see

RENEWAL

Monument Set (Procedure and Description)

Monument Detail

NONE

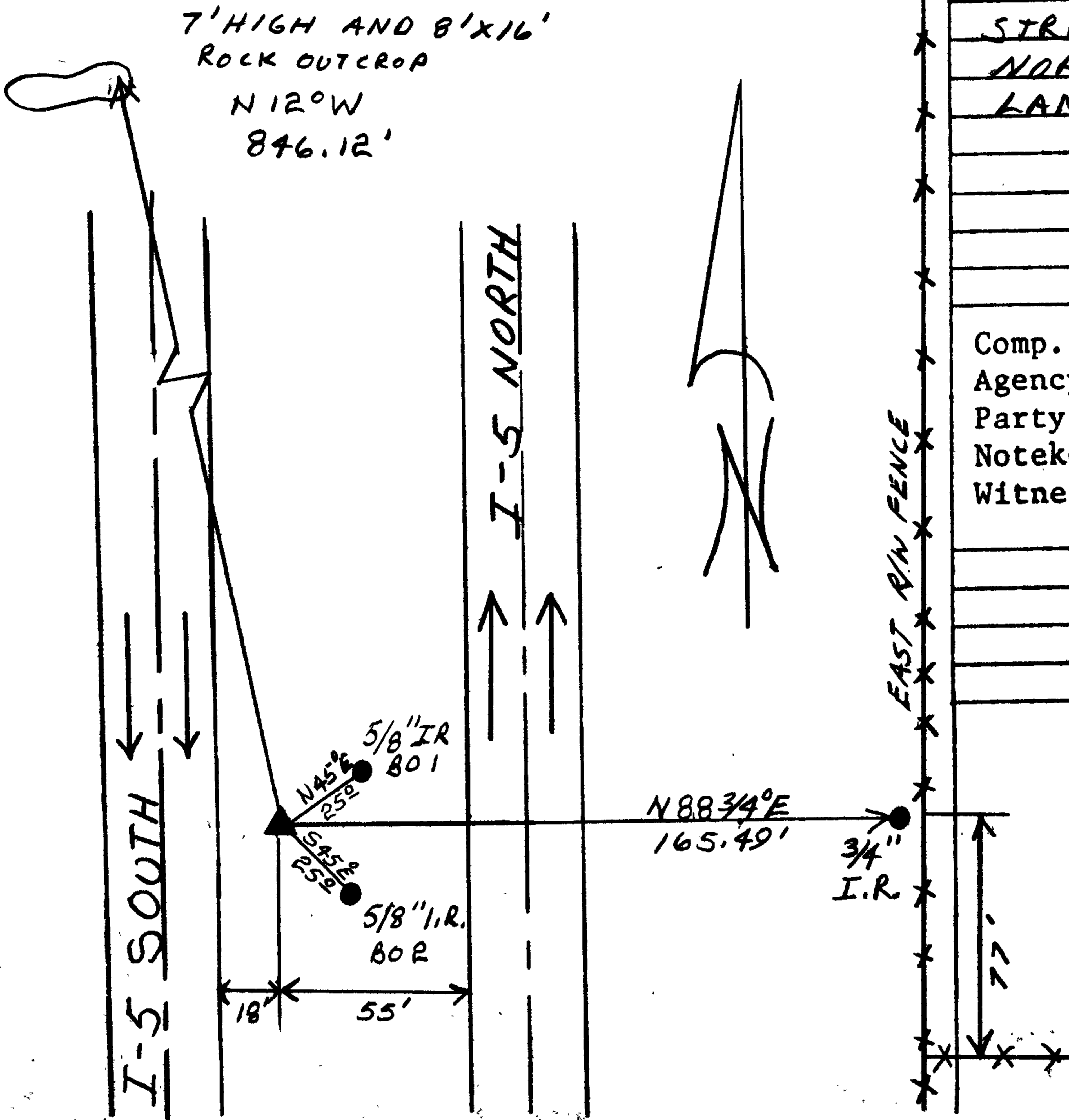
N/A

New Accessories

A 5/8" I.R. WITH AN ALUMINUM CAP STAMPED "B01 1984"
SET FLUSH WITH GROUND BEARS N45°E, 25° FT.

A 5/8" I.R. WITH AN ALUMINUM CAP STAMPED "B02 1984"
SET FLUSH WITH GROUND BEARS S45°E 25° FT.

Sketch of Monument, Accessories, and General Area

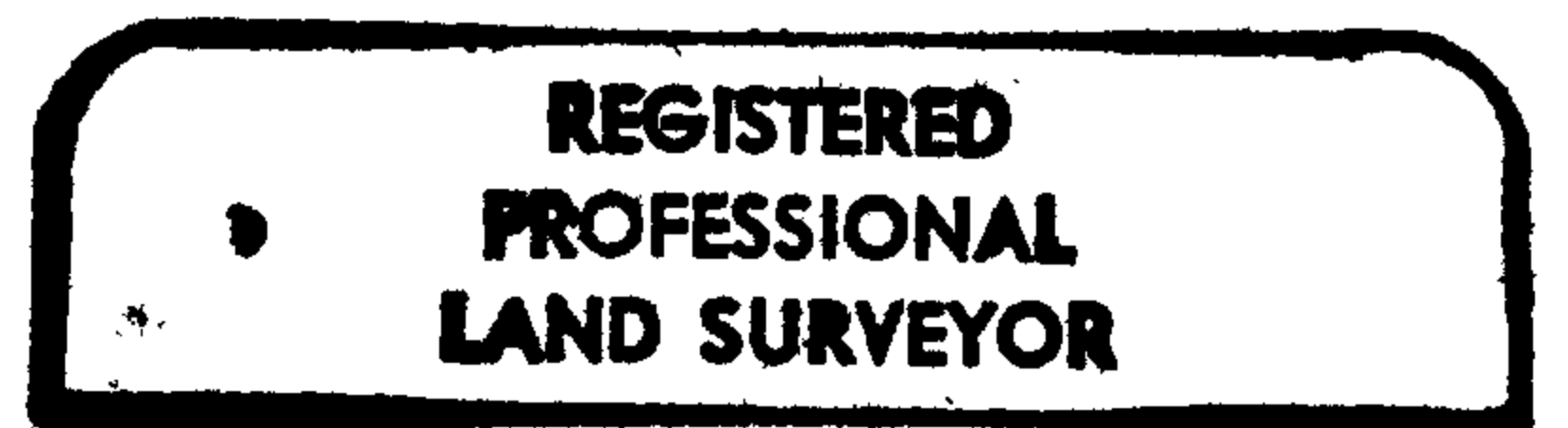


Location & Comments

CORNER LIES IN MEDIAN STRIP BETWEEN THE NORTH AND SOUTH BOUND LANES OF I-5.

Comp. Declin. 18 1/2°
Agency DCSO
Party Chief RANDALL W. SMITH
Notekeeper Randall W. SMITH
Witnesses STEPHEN J. FLAISE

Surveyor's Seal



Harry E. Monrean

