

GOVERNMENT CORNER RESTORATION FORM

Township 28S Range 6W Sec. 7 County DOUGLAS

State OREGON Date JULY 30, 1989 No. _____

Corner Designation

T28S
R7W R6W
1/4
S12 | S7

- Condition Report Only
- Not Found
- Renewed
- Unrecorded
- Surveyed In
- Referenced Out

Previous Renewals #76 AND IN T28S R7W #113 & #99

Monument(s) Found: (Condition and Source)

A 1 INCH DIAMETER OCTAGONAL GUN BARREL
FIRMLY SET AND PROTRUDING 3 INCHES FROM
GROUND. SET BY FREAR IN RENEWAL #99, T.28-7

MONUMENT DETAIL

Accessories Found:

POSSIBLE ORIGINAL BT STUMPHOLE CONTAINING ROTTED OAK WOOD LIES IN
VICINITY OF RECORD CALL N 36°W, 26 LKS. OTHER ORIGINAL BT GONE.
FROM RENEWAL #99 A 4" MADRONE NOW A 14 INCH D.B.H. MADRONE
BEARS N08°E, 10² FT DIST. (AS PER RECORD) CENTER OF TREE IS ROTTEN OUT
NO EVIDENCE OF BLAZE OR SCRIBING IS FOUND. A 30" BLACK OAK, NOW
A STUMP ROTTED TO GROUND BEARS N64 3/4°W, 25² FT. DIST. (AS PER RECORD)
IN ROTTED FRAGMENTS OF TRUNK IS FOUND WOOD FORMERLY COVERING
A SINGLE BLAZE WITH REVERSE SCRIBING, 1/4 S BT, (PRESERVED AT
DCSD).

FROM RENEWAL #76 AND #113 AN 8" NOW AN 11 INCH D.B.H. BLACK OAK BEARS
(RECORD S46°E) S44°E, 11 1/2 FT DIST TO CENTER OF CROWN (RECORD 11 3/4 FT. MEASURES TO CENTER
OF TRUNK AT HEIGHT OF UPPER BLAZE). TREE HAS WELL HEALED DOUBLE
BLAZE, NO SCRIBING VISIBLE. ALSO FROM RENEWAL #76 AND #113 AN 8"
NOW A 12 INCH D.B.H. WHITE OAK BEARS S54 1/2°W, 39² FT DIST. (AS PER
RECORD. TREE HAS HEALED DOUBLE BLAZE, NO SCRIBING VISIBLE.

#167 T28-6 ✓
#255 T28-7 ✓

RENEWAL

Monument Set (Procedure and Description)

Monument Detail

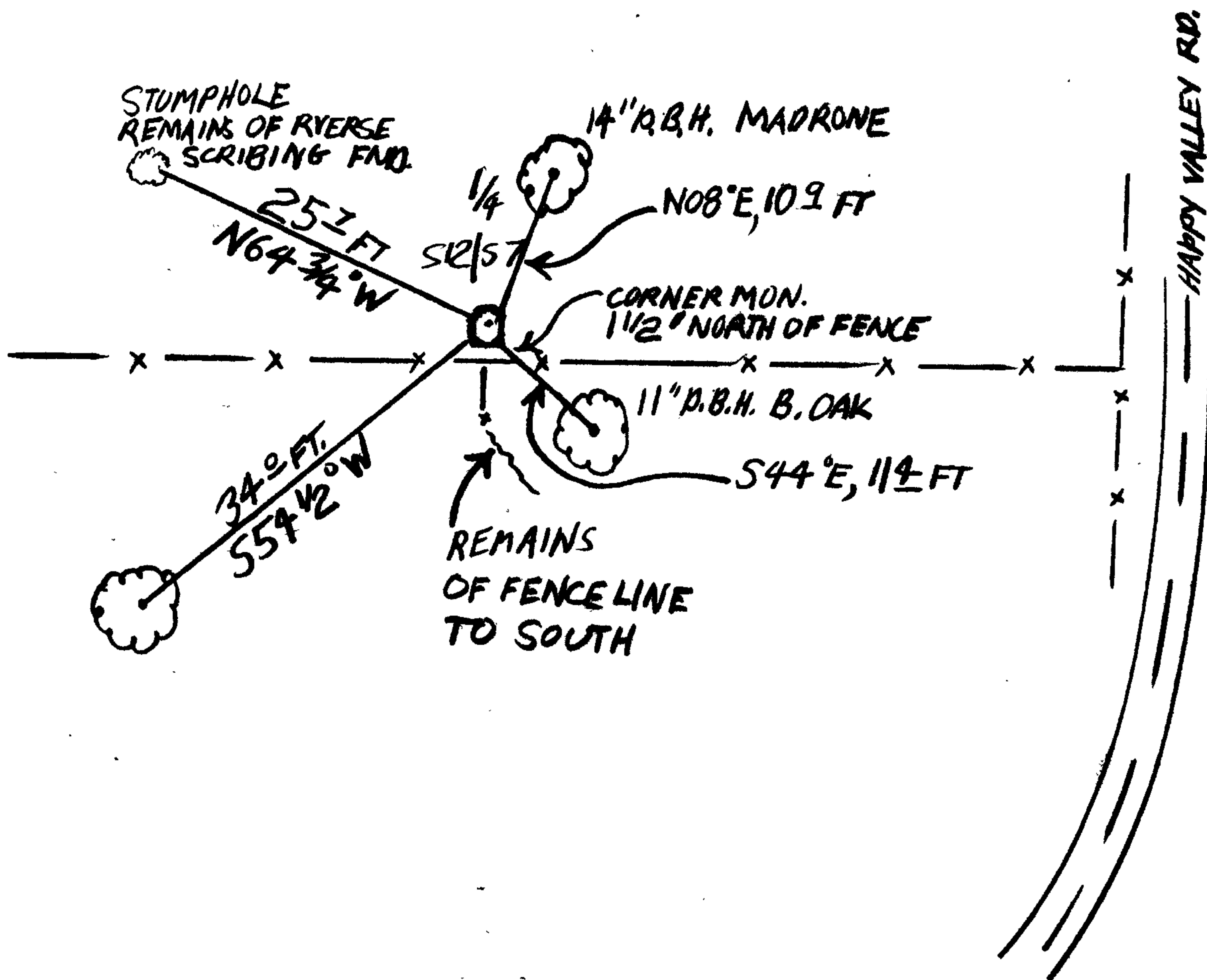
N/A

(none)

New Accessories

A DCSO BT TAG IS ATTACHED TO NE MADRONE FROM RENEWAL #99 MARKED AS PER RECORD. A DCSO BT TAG IS ADDED TO SE OAK FROM RENEWAL #76 AND MARKED S44°E, 11.9 FT.

Sketch of Monument, Accessories, and General Area



Location & Comments

CORNER IS 450 FT ± NORTH OF INTERSECTION OF HAPPY VLLY RD & LOOKINGGLASS RD AND 150 FT ± WEST OF HAPPY VLLY RD. CORNER IS UP HILL FROM ROADWAY ON EAST SLOPE OF A RIDGE. CORNER LIES 1 1/2 FT NORTH OF POINT WHERE EAST-WEST FENCE AND REMAINS OF FENCE RUNNING SOUTH INTERSECT.

Comp. Declin. 18 1/2° E
Agency DCSO
Party Chief R.W. SMITH
Notekeeper [Signature]
Witnesses S.J. FLAISE

Surveyor's Seal

REGISTERED PROFESSIONAL LAND SURVEYOR

[Signature]

OREGON
JULY 13, 1979
LARRY E. MONREAN
#1830