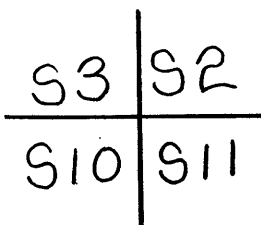


GOVERNMENT CORNER RESTORATION FORM

Township P8S Range 6W Sec. 2 County DOUGLAS

State OR Date 7/30/84 No. \_\_\_\_\_

Corner Designation



- Condition Report Only
- Not Found
- Renewed
- Unrecorded
- Surveyed In
- Referenced Out

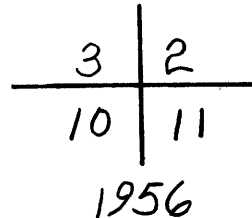
Previous Renewals #48 #56

Monument(s) Found: (Condition and Source)

A BRASS CAP ON A I.P. SET 4 IN. BELOW GROUND, MARKED AS NOTED (PER REN. # 56).

COUNTY SURVEYORS OFFICE

T28S R6W



Accessories Found:

- ① FD. THE INITIAL POINT OF ADURNES SUBDIVISION (LOCATED WITH A METAL DETECTOR, MONUMENT LIES IN A LANDSCAPED YARD) BEARS N19°W, 50 FT (REC NO° 13'E). PER REN# 48. (MONUMENT NOT UNCOVERED). INITIAL POINT IS A 2" X 36" I.P. PER VOL 8 PG 37.
- ② FD. A 5/8" I.R. INSIDE A 3 1/2" IRON PIPE 20" BELOW GROUND (REC 1 1/2" X 36" AXLE PER, REN# 48) (5/8" I.R. PER VOL 12 PG 55) BEARS S27°W, 10.0 FT. (REC SOUTH PER. REN# 48).

#1654

RENEWAL

Monument Set (Procedure and Description)

NONE

Monument Detail

N/A

New Accessories

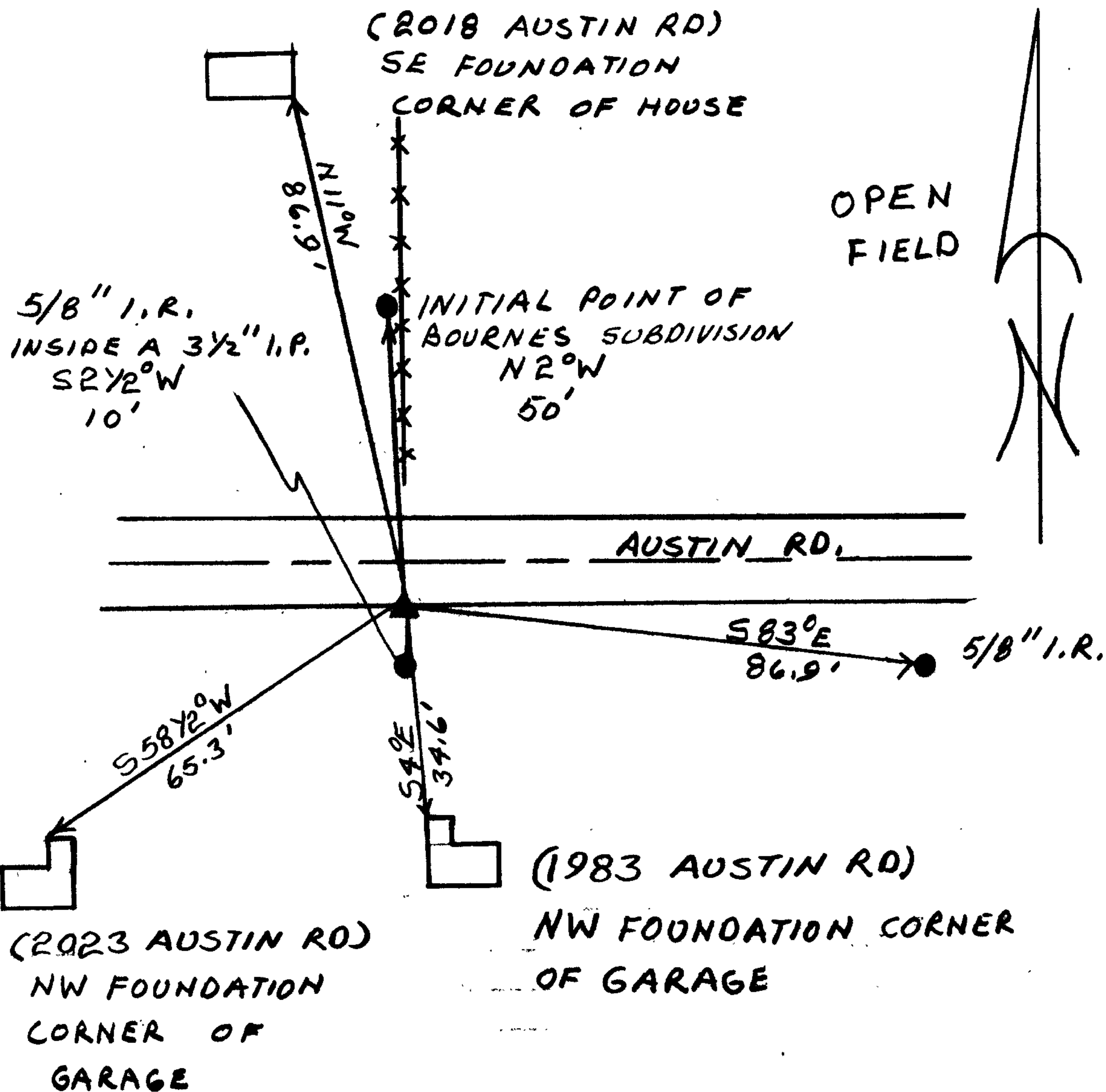
A 5/8" I.R. BEARS S83°E 86.9 FT.

NW FOUNDATION CORNER OF GARAGE AT 1983 AUSTIN RD. BEARS S4°E, 34.6 FT.

NW FOUNDATION CORNER OF GARAGE AT 2023 AUSTIN RD. BEARS S58 1/2°W, 65.3 FT.

SE FOUNDATION CORNER OF HOUSE AT 2018 AUSTIN RD. BEARS N11°W, 86.9 FT.

Sketch of Monument, Accessories, and General Area



Location & Comments

CORNER IS APPROX. 225 FT WEST OF THE INTERSECTION OF AUSTIN RD AND HERMOSA WAY. NEAR THE SOUTH EDGE OF AUSTIN ROAD PAVEMENT.

SEE SURVEY'S THAT REFERENCE COR. VOL 17 PG 55 (FIRST ADD. TO SUNNYSLOPE SUBD) VOL 8 PG 37 (BOURNES SUBD.)

Comp. Declin. 18 1/2° E  
Agency DCSO  
Party Chief RANDALL W. SMITH  
Notekeeper Randall W. Smith  
Witnesses STEPHEN J. FLAUSE

Surveyor's Seal  
REGISTERED  
PROFESSIONAL  
LAND SURVEYOR

Larry E. Monrean

OREGON  
JULY 13, 1979  
LARRY E. MONREAN  
#1830