



RENEWAL

Monument Detail

Monument Set (Procedure and Description)

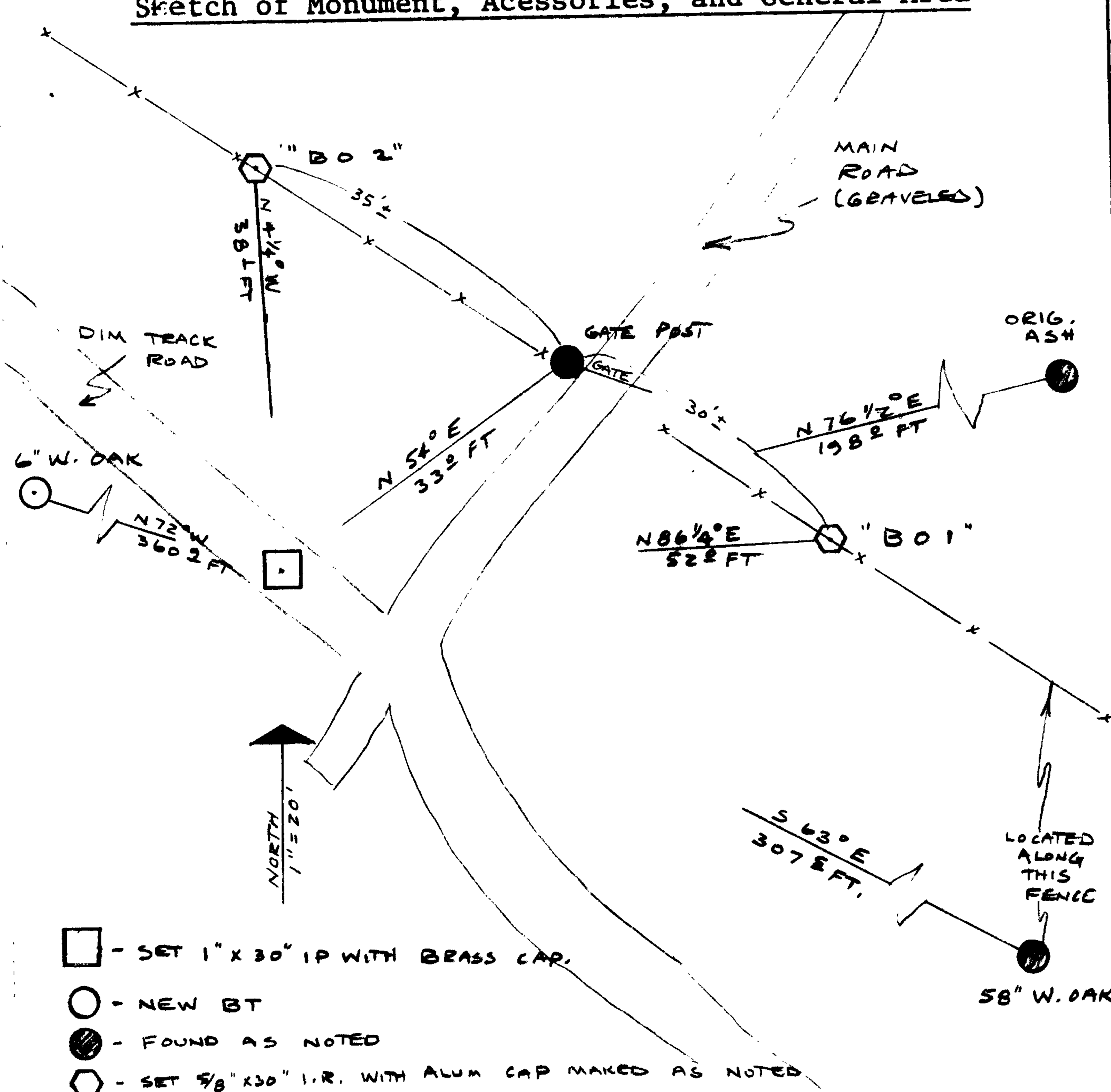
SET A 1" X 30" IRON PIPE WITH ATTACHED BRASS CAP 42" DEEP (CAP IS 14" BELOW SURFACE) AT THE POSITION CORNER POSITION.

DOUGLAS COUNTY SURVEYOR  
 T 27 S R 6 W  
 C C  
 S 33 | S 34  
 1984

New Accessories

1. A 6" W. OAK DOUBLE BLAZED AND SCRIBED "CC T27S R6W S33 CSBT" BEARS N 72° W 360<sup>9</sup> FT.
2. 5/8" X 30" IRON ROD WITH "DOUGLAS CO. SURVEYOR" ALUM. CAP ATTACHED AND STAMPED "B01", SET IN FENCE LINE (RUNNING S 56° E), 4" ABOVE GROUND BEARS N 86<sup>1</sup>/<sub>4</sub>° E 52<sup>2</sup> FEET.
3. 5/8" X 30" IRON ROD WITH "DOUGLAS CO. SURVEYOR" ALUM. CAP ATTACHED AND STAMPED "B02", SET IN FENCE LINE (RUNNING S 56° E), 4" ABOVE GROUND BEARS N 4<sup>1</sup>/<sub>4</sub>° W, 38<sup>1</sup> FEET.

Sketch of Monument, Accessories, and General Area



Location & Comments

SEE SKETCH - CORNER FALLS IN DIM TRACK ROAD.

Comp. Declin. 18<sup>1</sup>/<sub>2</sub>° EAST  
 Agency DOUGLAS COUNTY SURVEYORS OFFICE  
 Party Chief LARRY E. MONREAN  
 Notekeeper " " "  
 Witnesses R. W. SMITH, S. J. FLAWE

Surveyor's Seal

REGISTERED  
 PROFESSIONAL  
 LAND SURVEYOR

*Larry E. Monrean*

OREGON  
 JULY 13, 1979  
 LARRY E. MONREAN  
 #1830

- - SET 1" X 30" IP WITH BRASS CAP.
- - NEW BT
- - FOUND AS NOTED
- ⬡ - SET 5/8" X 30" I.R. WITH ALUM CAP MADE AS NOTED