

GOVERNMENT CORNER RESTORATION FORM

Township 27 S Range 6 W Sec. 27 County DOUGLAS

MAY 14 1984

State OREGON Date 5-9-84

No. _____ COUNTY SURVEYOR
DOUGLAS COUNTY, ORE.

Corner Designation

$\frac{1}{4}$ S 28 | S 27

- Condition Report Only
- Not Found
- Renewed
- Unrecorded
- Surveyed In
- Referenced Out

Previous Renewals 89

MONUMENT DETAIL

Monument(s) Found: (Condition and Source)
ORIGINAL POST MONUMENT NOT FOUND.

FROM RENEWAL NO. 89 (BYRON 1961)
FOUND A 1" DIAM. IRON PIPE WITH
BRASS CAP. MONUMENT IS FIRMLY SET
AND PROTRUDES ABOUT 14 INCHES
ABOVE GROUND

COUNTY SURVEYOR'S OFFICE

T 27 S R 6 W

$\frac{1}{4}$ S 28 | S 27

1961

Accessories Found:

ORIGINAL BT.

1. RECORD 12" Y. OAK NOW A 22 INCH DIAM. B. OAK PREVIOUSLY OPENED
BY BYRON HAS FRAGMENTARY SCRIBING VISIBLE ON PARTIALLY REHEALED
BLAZE. THIS TREE IS IN GOOD CONDITION AND BEARS N 54° W 56 8/10 FEET.

ORIG. NE BT NOT FOUND.

BT'S PER RENEWAL # 89

2. A 20" NOW 27" DIAM. TRUNK OF A DOUBLE TRUNK CEDAR WITH WELL
HEALED DOUBLE BLAZE BEARS S 4 1/2° E (REC. S 2 1/2° E) 28 7/10 FEET
TO CENTER OF ROOT CROWN. A 20" DIAM TRUNK OF A DOUBLE
TRUNK CEDAR IS SITUATED ON LINE BETWEEN MONUMENT AND BEARING
TREE.

3. A 12" DIAM. W. OAK WITH WELL HEALED DOUBLE BLAZE
BEARS N 48° W 21 1/2 FEET.

#170

C

RENEWAL

Monument Set (Procedure and Description)

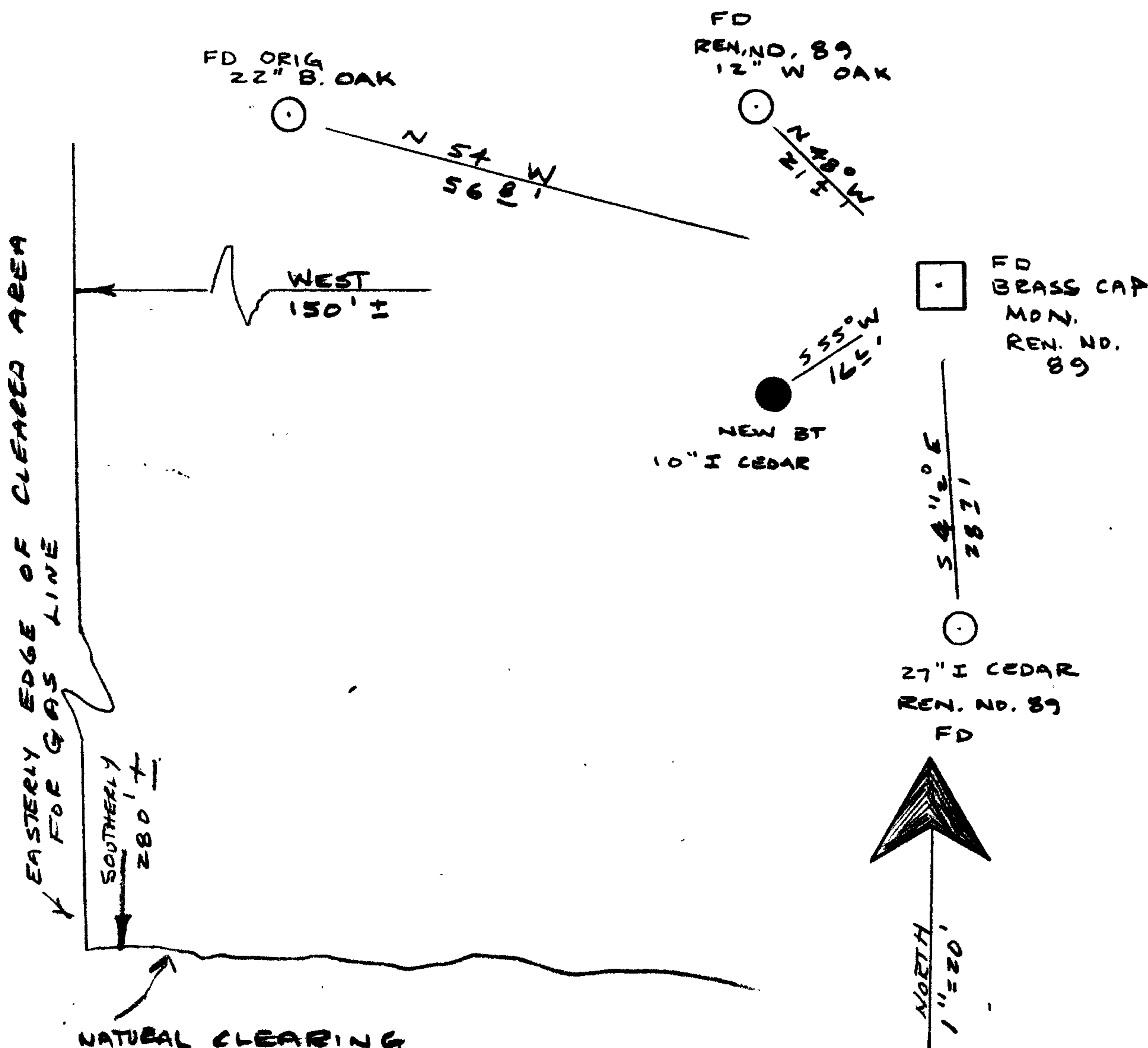
NONE

Monument Detail

New Accessories

10 INCH DIAM I CEDAR DOUBLE BLAZED AND SCRIBED "1/4 S 28 CS BT" BEARS
S 55° W 16 6 FEET

Sketch of Monument, Accessories, and General Area



Location & Comments

Comp. Declin. 19° EAST
Agency IND. CO. SURV. OFF.
Party Chief LARRY E. MONREAN
Notekeeper " " "
Witnesses S. J. FLAUSE

Surveyor's Seal

REGISTERED
PROFESSIONAL
LAND SURVEYOR

Larry E. Monrean
OREGON
JULY 13, 1979
LARRY E. MONREAN
#1830