

GOVERNMENT CORNER RESTORATION FORM

Township 31S Range 6W Sec. 26 County DOUGLAS

State OR Date 3/28/89 No. _____

Corner Designation

1/4 S23
S26

- Condition Report Only
- Not Found
- Renewed
- Unrecorded
- Surveyed In
- Referenced Out

MONUMENT DETAIL

Previous Renewals REN#16, REN#48,

Monument(s) Found: (Condition and Source)

1" DRILL STEEL PROTRUDING
4" ABOVE GROUND PER REN#16

Accessories Found:

A 36" FIR NOW A 40" DIA. 25 FT. HIGH SNAG, WITH TWO NOTCHES ON EAST
SIDE AND ONE NOTCH ON WEST SIDE BEARS N 87° W, 15.7 FT
(REC. WEST 180 DIST. IS TO EAST SIDE OF BT) PER REN#16

NO OTHER EVIDENCE PER REN #16 FOUND

A 8" R. FIR NOW A 17" DIA. D. FIR WITH A WELL HEALED
SINGLE BLAZE BEARS S 57° W, 49.7 FT PER REN#48.

A 17" R. FIR NOW A 29" DIA. D. FIR WITH A WELL HEALED
DOUBLE BLAZE BEARS N 5° E, 48.6 FT PER REN#48.

#155 ✓

C.S. File No. 62/16-20 C

RENEWAL

Monument Set (Procedure and Description)

A DCSO DISK ON A 1" X 30" I.P. PROTRUDING
3 IN. ABOVE GROUND WITH 1 IN.
DRILL STEEL ALONGSIDE. MARKED
AS NOTED.

Monument Detail

DOUGLAS COUNTY SURVEYORS OFF.

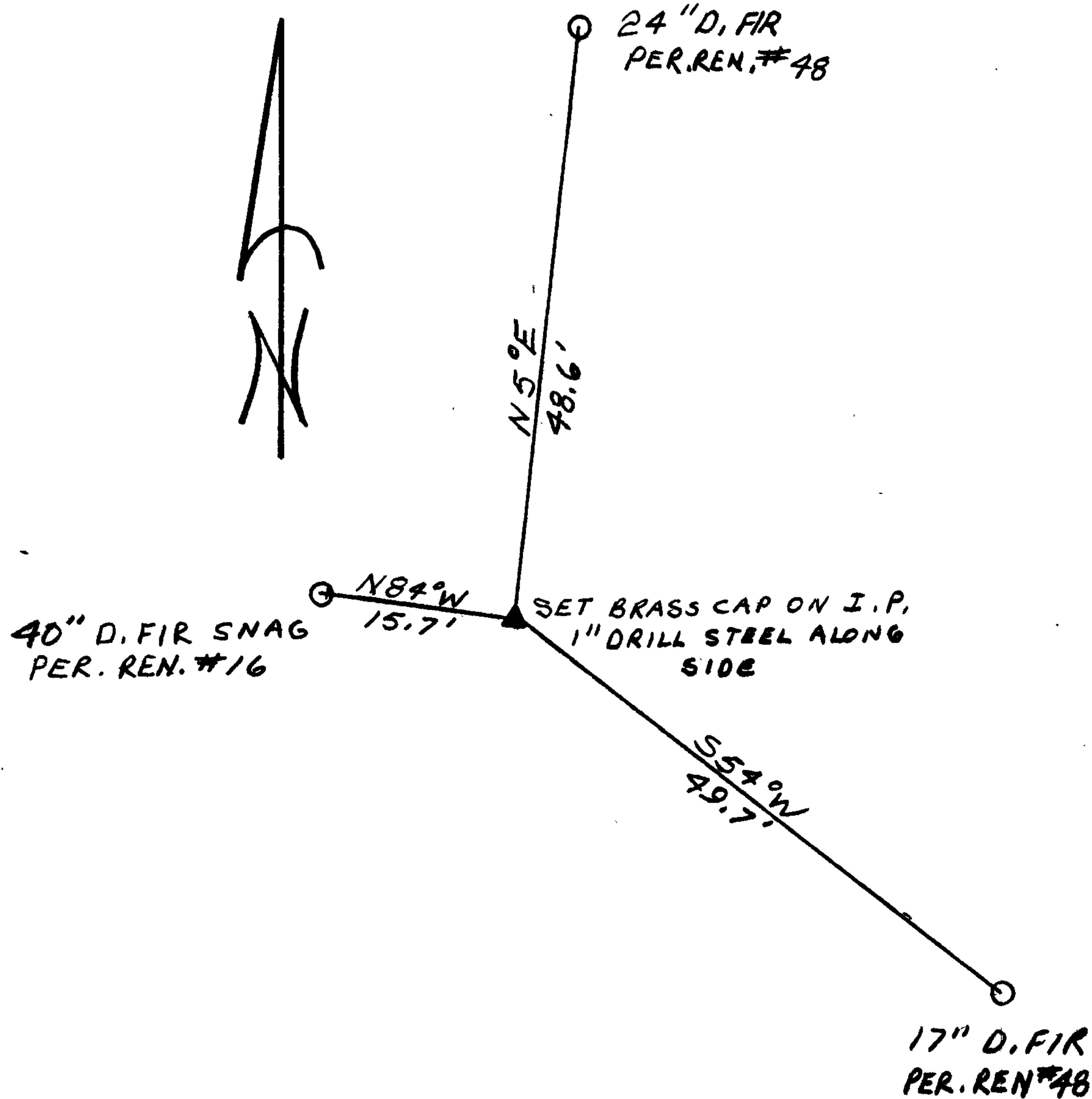
T31S R6W

1/4 S23
S26

1984

New Accessories

Sketch of Monument, Accessories, and General Area



Location & Comments

CORNER LIES ON STEEP
ROCKY EAST SLOPE

Comp. Declin. _____

Agency DCSO

Party Chief RANDALL W. SMIT

Notekeeper Randall W. Smit

Witnesses STEPHEN FLAUS

Surveyor's Seal

REGISTERED
PROFESSIONAL
LAND SURVEYOR

Larry E. Monrean
OREGON
JULY 13, 1979
LARRY E. MONREAN
#1830