

GOVERNMENT CORNER RESTORATION FORM

Township 27 S Range 6 W Sec. 9 County DOUGLAS

State OREGON Date 3-21-84 No. _____

Corner Designation

s 9	s 10
s 16	s 15

- Condition Report Only
- Not Found
- Renewed
- Unrecorded
- Surveyed In
- Referenced Out

Previous Renewals # 21 & # 47 ALSO SEE M 95-71

Monument(s) Found: (Condition and Source)
FOUND HUB AND TACK SET BY BAUGHMAN (M 95-71)

WE COULD NOT FIND THE ORIGINAL MONUMENT, THE CHIPPED RIVER BOULDER OR 1/4" X 18" IRON BAR PER OR CHARCOAL REFERRED TO IN RENEWAL # 21, NOR COULD WE LOCATE THE 6" X 6" X 24" CONCRETE POST WITH BRASS PLATE REFERRED TO IN RENEWAL NO. 47.

RESIDENCE OF THE OLD JONES HOUSE (ERICKSON) INDICATE ALONG WITH A MR. LAWRENCE THAT THE FIELD WHICH THE CORNER MONUMENT HAD BEEN LOCATED IN HAD BEEN PLOWED 2 YEARS EARLIER, EVIDENTLY THE MONUMENT WAS LOST AT THIS TIME.

Accessories Found:
NO ORIGINAL BT'S FOUND

RENEWAL # 21 ACCESSORIES

A 40" NW 52" DIA. BLACK OAK WITH NO VISIBLE BLAZE BEARS S 82 1/2° W 185° FT. (REC. PER REN. # 21 & M 95-71 S 83° 30' W). WE DID FIND A NAIL AND A SMALL PORTION OF A BT TAG ATTACHED TO TREE.

FROM SOUTH EAST CORNER OF CONCRETE BASEMENT (NOT WOODEN PORCH) OF BEN E. JONES HOUSE BEARS N 68° W 156 ± FT (REC. PER REN. # 21 & M 95-71 N 67° 30' W 156 ± FT). THIS HOUSE IS CURRENTLY THE RESIDENCE OF VERNA A ERICKSON.

169

C

RENEWAL

Monument Detail

Monument Set (Procedure and Description)

AS WE ARE UNABLE TO LOCATE ANY OF THE MONUMENTS PREVIOUSLY ESTABLISHED, WE SET A 1" X 30" GALV. IRON PIPE AT POSITION OF FOUND HUB AND TACK BY BAUGHMAN (M 95771). THE ATTACHED BRASS CAP IS MARKED AS NOTED. MONUMENT IS SET WITH TOP 15 INCHES BELOW GROUND SURFACE AS ACTIVITY IN THIS AREA HAS DESTROYED PREVIOUS MONUMENTS.

DOUGLAS COUNTY SURVEYOR

T 29 S R 6 W

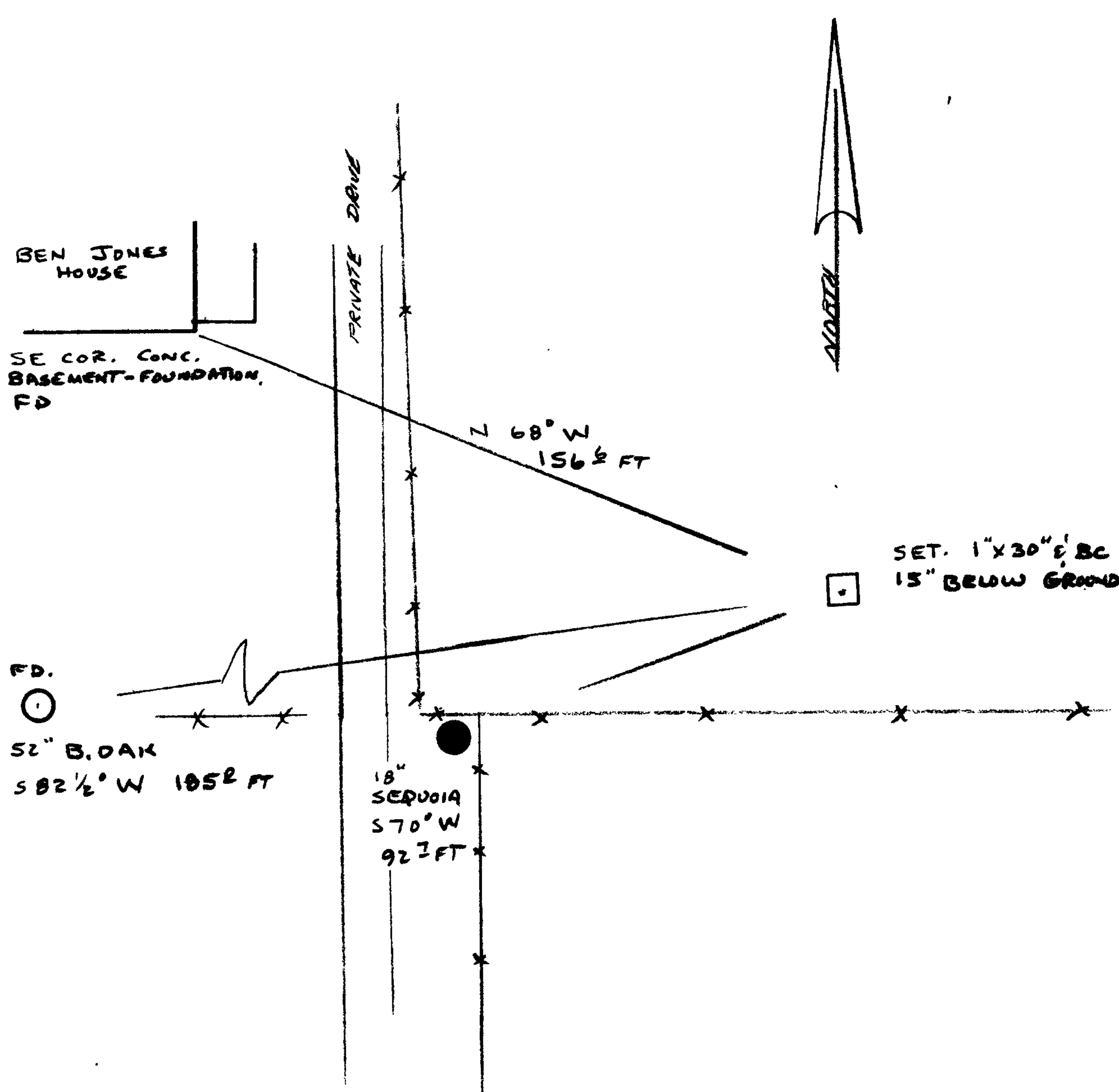
89	S10
S16	S15

1984

New Accessories

A SEQUOIA 18" DIAM. DOUBLE BLAZED AND SCRIBED "S16 CS BT" BEARS S 70° W 92 7/8 FEET.

Sketch of Monument, Accessories, and General Area



Location & Comments

Comp. Declin. 19° EAST
 Agency DOUGLAS CO. SURVEYOR'S OFF.
 Party Chief LARRY E. MONREAN
 Notekeeper " " "
 Witnesses J. R. LUNDEEN

Surveyor's Seal

REGISTERED
PROFESSIONAL
LAND SURVEYOR

Larry E. Monrean

OREGON
JULY 13, 1979
LARRY E. MONREAN
#1830