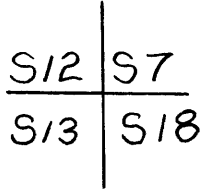


GOVERNMENT CORNER RESTORATION FORM

Township 27S Range 6W Sec. 7 County DOUGLAS

State OR Date 3/9/84 No. \_\_\_\_\_

Corner Designation



- Condition Report Only
- Not Found
- Renewed
- Unrecorded
- Surveyed In
- Referenced Out

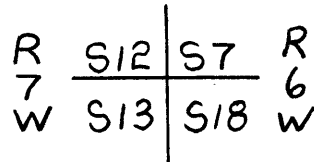
Previous Renewals #70

Monument(s) Found: (Condition and Source)

FOUND IRON PIPE WITH BRASS CAP  
BENT OVER AND OUT OF POSITION.  
MONUMENT WAS PUSHED OVER BY  
RECENT BULL DOZER WORK.

COUNTY SURVEYORS OFFICE

T27S



1960

Accessories Found:

ORIGINAL 11" NOW A 25" DIA. B. OAK, DOUBLE BLAZED WITH UPPER  
BLAZE OPENED AND ROTTED OUT, BEARS S63°W (REC. S60½°W)  
20.5 FT.

ORIGINAL 13" NOW A 24" DIA. B. OAK, RESCRIBED PER REN. #70,  
WITH WELL HEALED DOUBLE BLAZE, BEARS N32°W (REC. N35°W)  
29.7 FT.

ED. 20" NOW 21" DIA. B. OAK WITH A WELL HEALED DOUBLE BLAZE,  
BEARS S63°W 28.1 FT. PER. REN. #70.

ED. 20" B. OAK NOW DOWN AND ROTTED, ROOT HOLE BEARS  
S55°E 115.3 FT. PER REN. #70.

ED. 20" NOW 25" DIA. B. OAK, WITH A WELL HEALED DOUBLE BLAZE  
BEARS N58°E (REC. N62°E IS TO ROOT CROWN OF AN OAK AND MADRONE  
TREE THAT HAVE GROWN TOGETHER, NORTH BRANCH IS THE OAK BT, SOUTH  
BRANCH IS A MADRONE TREE) 16.3 FT. PER. REN. #70.

#168, T27-6  
 #194, T27-7

C.S. File No. 62/16-16

C✓

RENEWAL

Monument Detail

Monument Set (Procedure and Description)

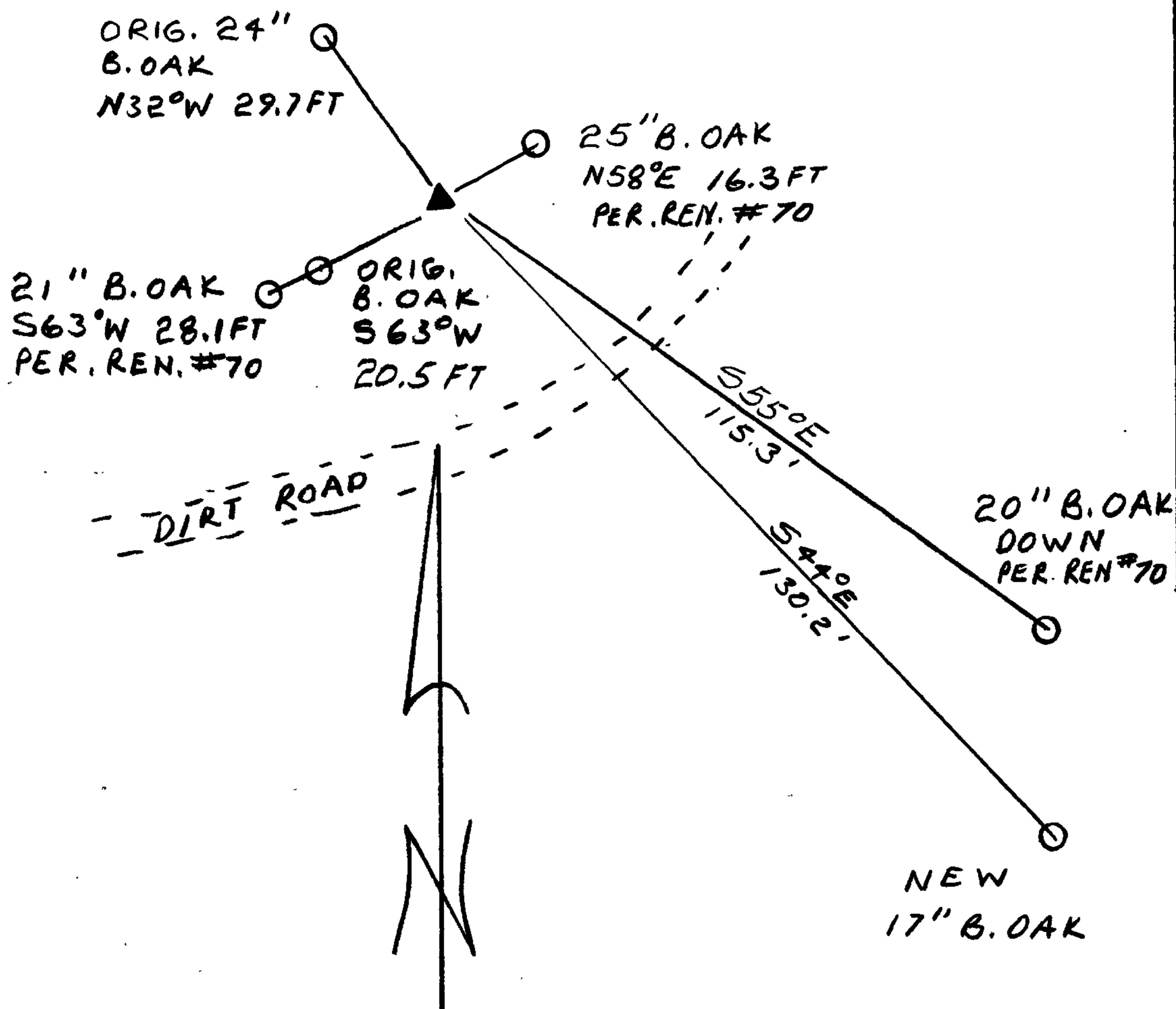
IRON PIPE AND BRASS CAP PER. REN#70  
 WAS RESET USING DISTANCES OF ORIG.  
 BEARING TREES. CAP WAS STAMPED  
 "RESET 1984".

NOTE: ORIGINAL BEARINGS WHEN INTERSECTED  
 DID NOT FIT THE DISTANCES

New Accessories

A 17" B. OAK DOUBLE BLAZED AND SCRIBED "T275 R6W S18 CS BT"  
 BEARS S44°E 130.2 FT.

Sketch of Monument, Accessories, and General Area



Location & Comments

Comp. Declin. 19° EAST  
 Agency DCSO  
 Party Chief RANDALL W SMITH  
 Notekeeper Randall W Smith  
 Witnesses STEPHEN FLAUSE

Surveyor's Seal

REGISTERED  
 PROFESSIONAL  
 LAND SURVEYOR

*Larry E. Monrean*

OREGON  
 JULY 13, 1979  
 LARRY E. MONREAN  
 #1830