

GOVERNMENT CORNER RESTORATION FORM

Township 27S Range 4W Sec. 23 County DOUGLAS

State OR Date 2/10/84 No. _____

Corner Designation

22 + 23

- Condition Report Only
- Not Found
- Renewed
- Unrecorded
- Surveyed In
- Referenced Out

Previous Renewals

Monument(s) Found: (Condition and Source)

US BLM CADASTRAL SURVEY CAP ON 2 1/2" IRON PIPE PROTRUDING 5" ABOVE GROUND STAMPED =>

COUNTY SURVEYOR CAP ON 1 1/4" IRON PIPE PROTRUDING 10" ABOVE GROUND STAMPED, 1/4 S | S 22 | 23

T27S
R4W

1/4 S22 | S23

1975

T27S R4W
1959

Accessories Found:

BYRON'S C.S. CAP IS N 3 1/2° W 18.9 FT. FROM BLM MONUMENT. (BLM RECORD IS N 1° 30' E 19.1 FT.)

BYRON'S 5" FIR (NOW 12" WITH WELL HEALED DOUBLE BLAZE) BEARS S 73° E 52.5 FT FROM BYRON'S CAP - (BLM REC. S 73° E 52.1 FT) AND N 85 1/2° E 49.3 FT. FROM BLM MONUMENT.

BYRON'S 12" FIR (NOW 16" WITH WELL HEALED DOUBLE BLAZE - AND WITH FACE ORIENTED S 50° E) FOUND PER BLM RECORD FROM BYRON'S CAP, N 46° W 23.8 FT. - ALSO BEARS N 26° W 39.6 FT. FROM THE BLM CORNER.

BLM'S 9" FIR (NOW 10" WITH WELL HEALED BLAZE) FOUND PER BLM RECORD FROM BLM CORNER, S 20° E 15.2 FT.

BLM'S 8" FIR WITH WELL HEALED BLAZE BEARS N 70° W 20.2 FT. FROM BLM CORNER - (BLM RECORD N 70° W 19.8 FT.)

EVIDENCE OF THOROUGH SEARCH BY BLM.

#142

GLEB No. 62/16-14

RENEWAL

Monument Set (Procedure and Description)

Monument Detail

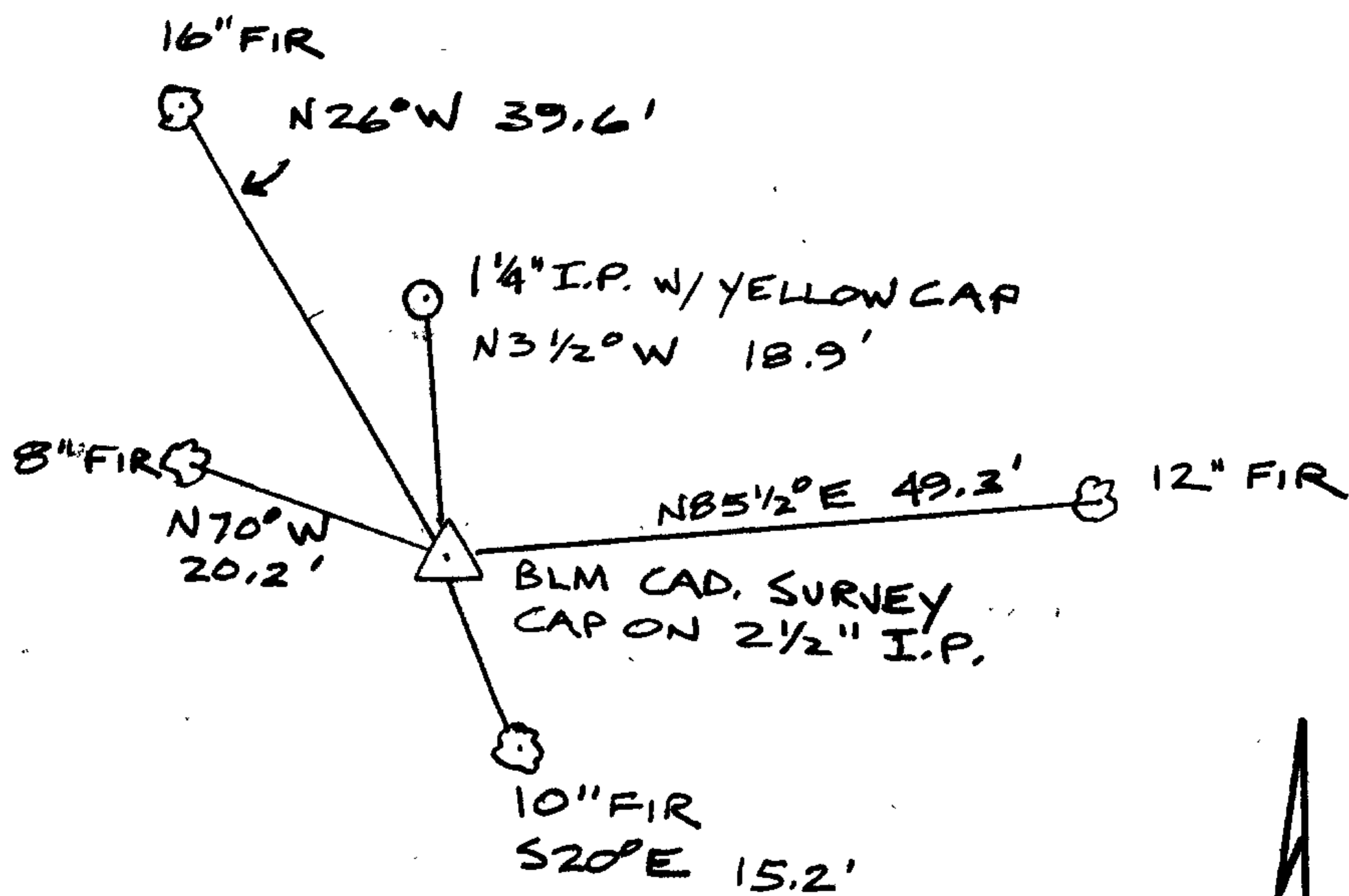
WE CUT CAP OFF BYRON'S 1 1/4" I.P. AND
 PLACE YELLOW PLASTIC CAP INSIDE
 WHICH IS STAMPED "DOUG. CO. SURVEYOR" SK

New Accessories COMMENTS

BYRON INCORRECTLY PROPORTIONED THIS CORNER IN 1959 PER SURVEY
 M14-42. BLM CORRECTLY PROPORTIONED THIS CORNER IN 1975.

Sketch of Monument, Accessories, and General Area

Location & Comments



1" = 30'

Comp. Declin. 19°E
 Agency DOUGLAS CO. SURVEYOR
 Party Chief L.E. MONREAN
 Notekeeper JANET LUNDEEN
 Witnesses RANDY SMITH

JR Lundeen

Surveyor's Seal

REGISTERED
 PROFESSIONAL
 LAND SURVEYOR

Larry E. Monrean
 OREGON
 JULY 13, 1979
 LARRY E. MONREAN
 #1830