

GOVERNMENT CORNER RESTORATION FORM

Township 27 S Range 4 W Sec. 23 County DOUGLAS

State OR Date 2/10/84 No. _____

Corner Designation

15 | 14
22 | 23

- Condition Report Only
- Not Found
- Renewed
- Unrecorded
- Surveyed In
- Referenced Out

Previous Renewals 54, 130

Monument(s) Found: (Condition and Source)

US BLM CADASTRAL SURVEY CAP 2 1/2" IRON PIPE
PROTRUDING 8" ABOVE GROUND AND STAMPED

2 1/2" COUNTY SURVEYOR CAP ON 1 1/4" IRON
PIPE STAMPED

S15 | S14

S22 | S23

T27S R4W

1959

PROTRUDING 17" ABOVE GROUND

MONUMENT DETAIL

T27S R4W

S15 | S14

S22 | S23

1975

Accessories Found:

BYRON'S 2 1/2" CAP BEARS N 1 1/2° W 39.30 FT FROM BLM CAP (BLM RECORD
N 2° 38' W 39.6)

BYRON'S 32" CEDAR (NOW 32" WITH PARTIALLY HEALED DOUBLE BLAZE) BEARS
N 9° E 76.0 FT FROM BYRON'S CAP (REC N 9° E 76.5 FT) AND ALSO BEARS
N 5° E 115.5 FROM BLM CAP.

BYRON'S 40" CEDAR (NOW 52" WITH WELL HEALED DOUBLE BLAZE) FOUND PER BYRON'S
RECORD, N 43° E 52.7 FT AND BEARS N 24° E 83.6 FT FROM BLM CAP.

BYRON'S 34" B. OAK (NOW 38" WITH WELL HEALED DOUBLE BLAZE) BEARS S 89° E
136.0 FT FROM BYRON'S CAP (REC S 89° E 135.4) AND BEARS N 74° E 139.9 FT.
FROM BLM CAP. NOTE: BYRON'S SCRIBING IS FOR WRONG SECTION.

TRACY'S 30" B. OAK (NOW 31" WITH WELL HEALED DOUBLE BLAZE ON 4 TRUNK
B. OAK) BEARS N 7° W 254.70 FROM BYRON'S CAP (RECORD N 7° W 252.6 FT.)
AND BEARS N 7 1/2° W 294.0 FT. FROM BLM. CAP

BLM'S 7" CEDAR (NOW 8" WITH WELL HEALED BLAZE ON TRIPLE TRUNK)
BEARS N 42 1/2° E 39.0 FT (BLM REC. N 40° E 38.9 FT) FROM BLM CAP

BLM'S 8" CEDAR (NOW 12" WITH PARTIALLY HEALED BLAZE) BEARS
S 43 1/2° E 15.7 FT (BLM REC S 40 1/2° E 15.2 FT.) FROM BLM CAP

(FOR MORE TREES SEE "COMMENTS" ON BACK SIDE)

#140

RENEWAL

Monument Detail

Monument Set (Procedure and Description)

WE CUT CAP OFF 1 1/4" I.P. AND PLACE YELLOW PLASTIC CAP INSIDE PIPE WHICH IS STAMPED

"DOUG. CO. SURVEYOR" (SK)

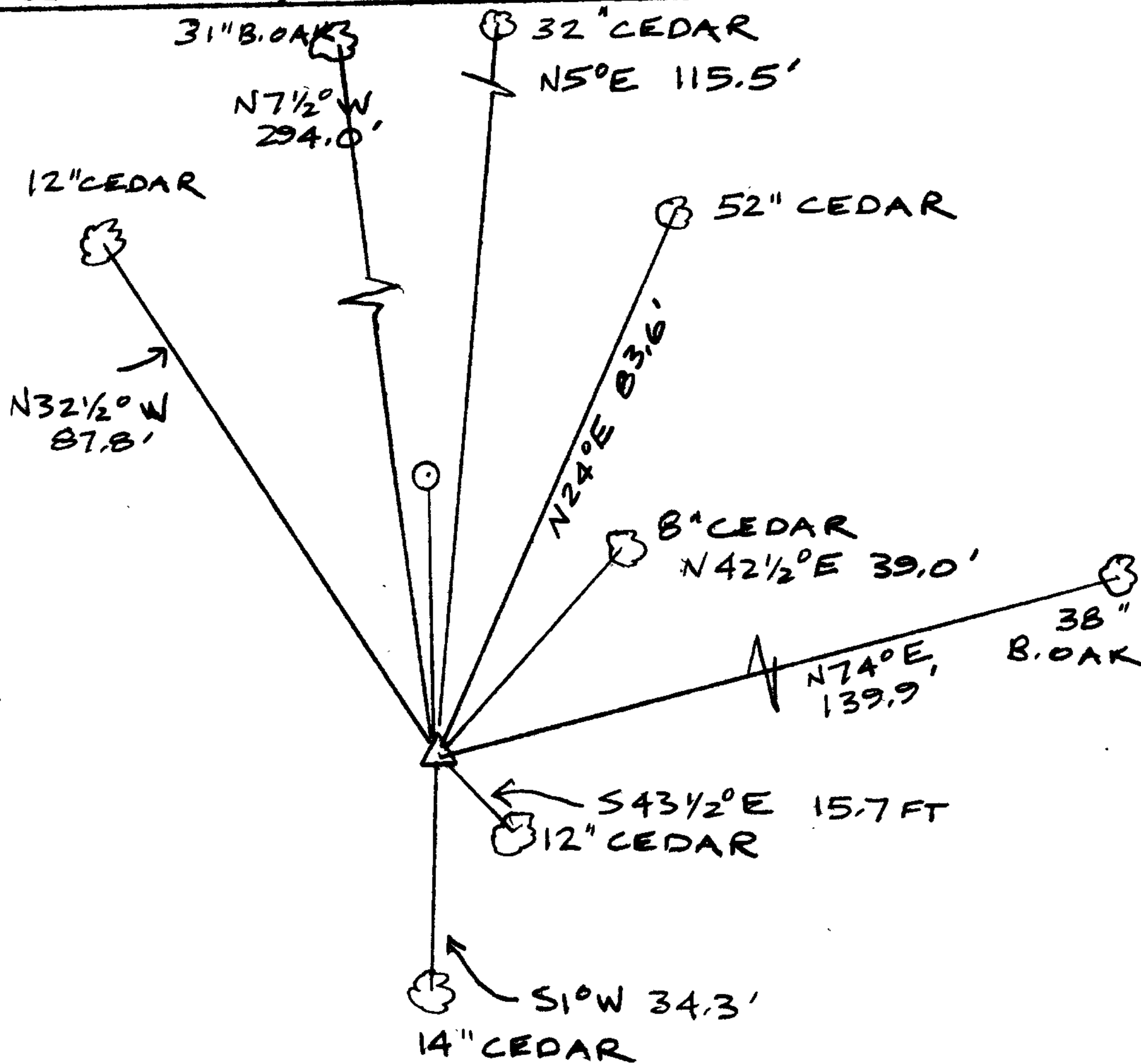
New Accessories COMMENTS

BYRON INCORRECTLY PROPORTIONED THIS CORNER IN 1959 PER SURVEY M 14-42. BLM CORRECTLY PROPORTIONED THIS CORNER IN 1975.

ACCESSORIES FOUND CONTINUED:

BLM'S 10" CEDAR (NOW 14" WITH WELL HEALED BLAZE) FOUND PER BLM REC, S1°W 34.3 FT.
BLM'S 6" CEDAR (NOW 12" WITH WELL HEALED BLAZE) BEARS N32 1/2° W 87.8 FT (BLM REC, N37°W, 87.8 FT) FROM BLM CAP.

Sketch of Monument, Accessories, and General Area

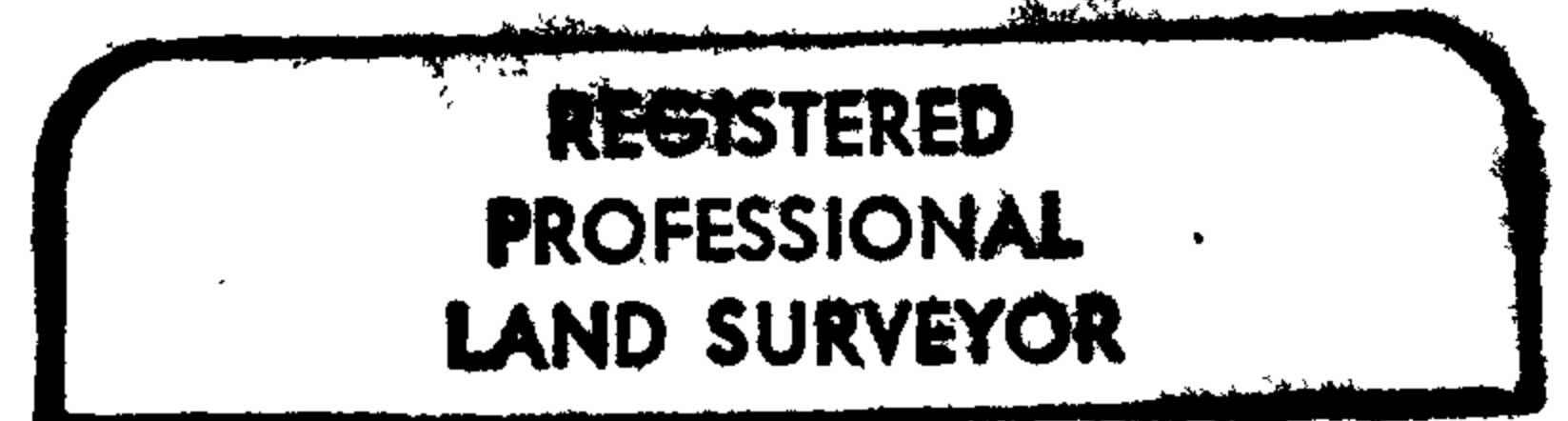


Location & Comments

Comp. Declin. 19° E
Agency DOUGLAS CO. SURVEYOR
Party Chief L. E. MONREAN
Notekeeper JANET LUNDEEN
Witnesses RANDY SMITH

JR Lundeen

Surveyor's Seal



Larry E. Monrean

