

GOVERNMENT CORNER RESTORATION FORM

Township 27S Range 2W Sec. 13 County DOUGLAS

State OREGON Date DEC. 12, 1984 No. _____

Corner Designation

CENTER QUARTER CORNER, SECTION 13,
TOWNSHIP 27 SOUTH, RANGE 2 WEST,
WILLAMETTE MERIDIAN.

- Condition Report Only
- Not Found
- Renewed
- Unrecorded
- Surveyed In
- Referenced Out

Previous Renewals 162, 221, MGS-20

Monument(s) Found: (Condition and Source)

CORNER WAS ESTABLISHED BY ROMAN SO
WARE, L.S. 1005, IN 1977. IT WAS
MONUMENTED WITH AN IRON PIPE ~~AND~~ WITH
BRASS CAP. 1982 THE IRON PIPE ~~WITH~~ BRASS
CAP WAS REFERENCED OUT AND THE MONUMENT
REMOVED BY JIM LANDRUM, DEPUTY COUNTY
SURVEYOR, DUE TO NEW ROAD CONSTRUCTION.

I AM UNABLE TO LOCATE WARE'S IRON PIPE,
REMOVED IN 1982.

MONUMENT DETAIL

Accessories Found:

BTS BY WARE IN 1977:

A 12" HEMLOCK (1/2 DEAD), BEARS N73°E (RECORD N69°E), 35[±] FT. WITH SCRIBE
MARKS "C 1/4 S13 BT" VISIBLE ON PARTIALLY HEALED DOUBLE BLAZE.
AND A 25" HEMLOCK, BEARS S32°W, 28[±] FT. WITH SCRIBE MARKS "C 1/4
S13 BT" VISIBLE ON PARTIALLY HEALED DOUBLE BLAZE.
BOTH BTS HAVE A 1/2" DIAMETER ALUMINUM WASHER, STAMPED "L.S. 1005"
NAILED TO LOWER BLAZES.

AND REFERENCE POINTS BY LANDRUM IN 1982:

A 60d NAIL IN BASE OF 68" D. FIR SNAG (ON EAST SIDE OF SNAG),
BEARS N68^{3/4}°W, 32[±] FT. TO CENTER OF NAIL HEAD.
A 60d NAIL IN TOP OF 48" D. FIR STUMP (6" FROM NE EDGE), BEARS
S74^{1/2}°E, 27[±] FT. TO CENTER OF NAIL HEAD.

FILED
RECEIVED ZR
DEC 20 1984
COUNTY SURVEYOR
DOUGLAS COUNTY, ORE.

#228 ✓

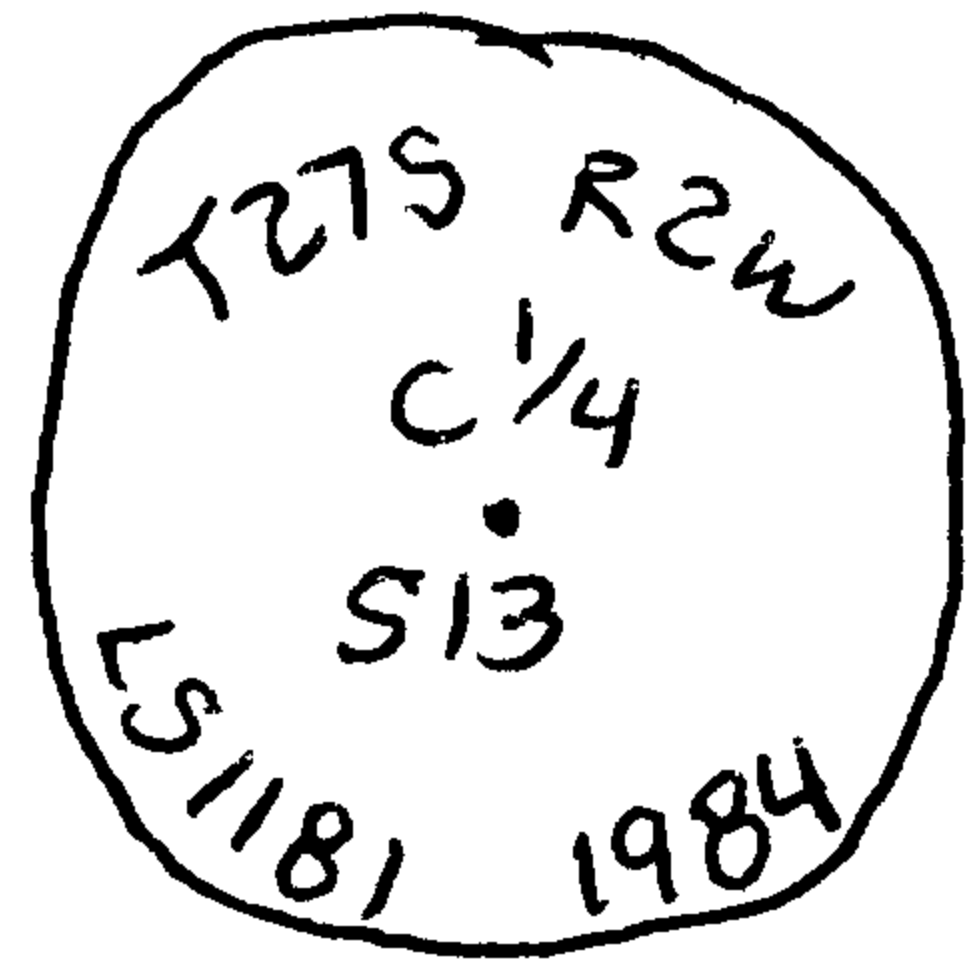
C.S. File No. 62/15-11 C

RENEWAL

Monument Set (Procedure and Description)

AT POINT OF INTERSECTION OF ALL RECORD DISTANCES AND OF THE BEARINGS AS NOTED, I ~~WAS~~ DIG A HOLE 34" DEEP IN GRAVEL ROAD (USFS ROAD # 2700-030). IN BOTTOM OF HOLE, I PLACE A 2 1/2" DIAMETER ~~ALUMINUM~~ ^{TIN} UNITED STATES TOBACCO CO. LID. I THEN SET A 2 1/4" OUTSIDE DIAMETER IRON PIPE, 25" LONG WITH FLARED BASE, IN THE HOLE WITH BRASS CAP MARKED AS SHOWN. BRASS CAP IS NOW 9" BELOW ROAD SURFACE IN RIGHT WHEEL TRACK WITH A 7" X 10" ALUMINUM SIGN IMMEDIATELY ON TOP OF IT.

Monument Detail

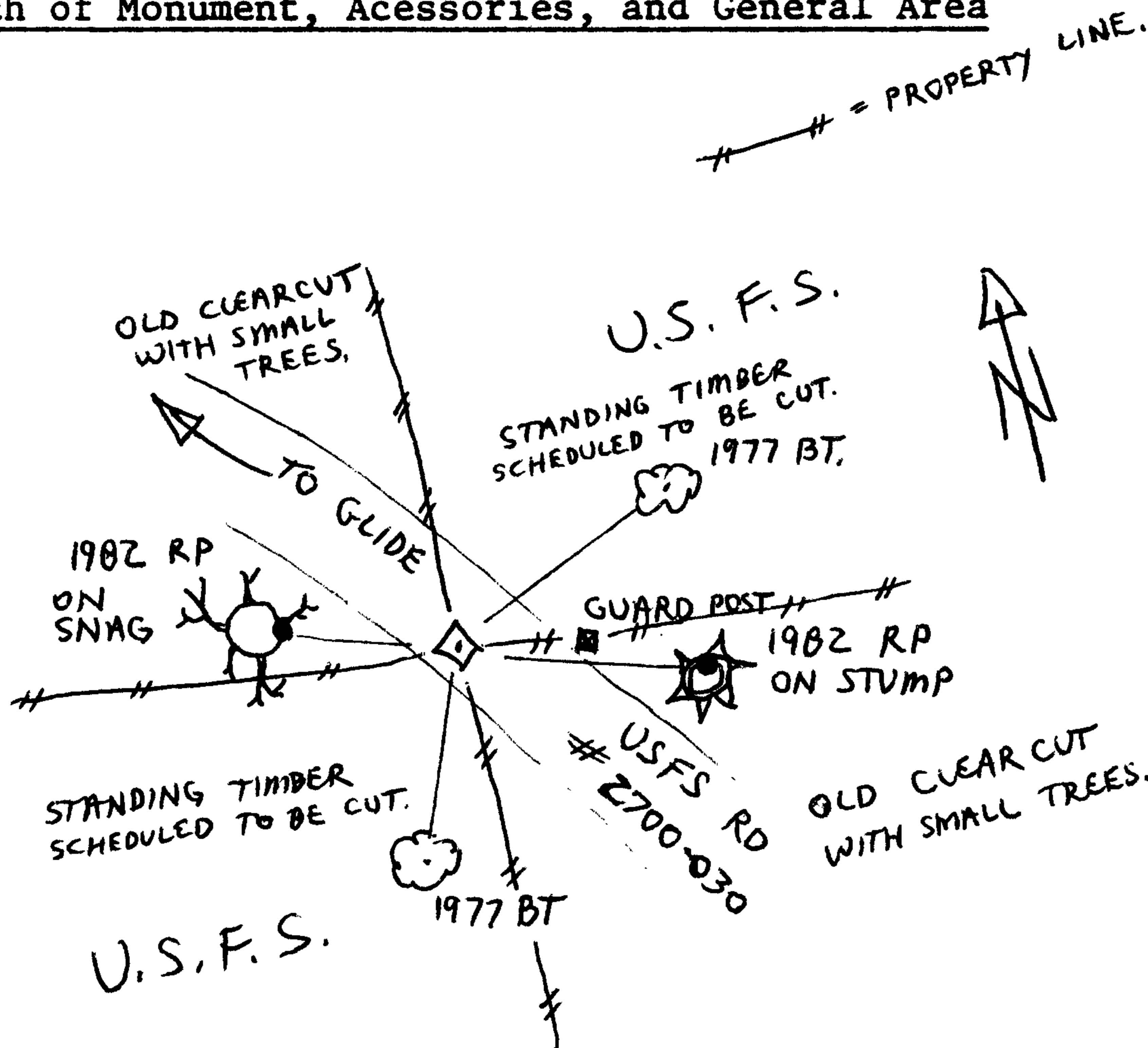


New Accessories

I SET A 4" X 4" WOOD POST, 6' LONG, 2 FT. IN THE GROUND, AS A GUARD POST, BEARS S 89° E, 21 1/2 FT., WITH USFS SIGNS # 54-2, # 54-6, AND # 54-9 ATTACHED.

ALL AVAILABLE TREES, AS ARE EXISTING BTS, ARE SCHEDULED TO BE CUT (FORTY TIMBER SALE), CORNER SHOULD BE CHECKED AFTER TIMBER IS ~~BEING~~ HARVESTED FOR CONDITION REPORT.

Sketch of Monument, Accessories, and General Area



Location & Comments

CORNER IS IN USFS RD. # 2700-030, 2 1/2 MILES FROM LITTLE RIVER ROAD. TOBACCO LID WAS PLACED ~~AT~~ AT CORNER POINT AS A MEMORIAL.

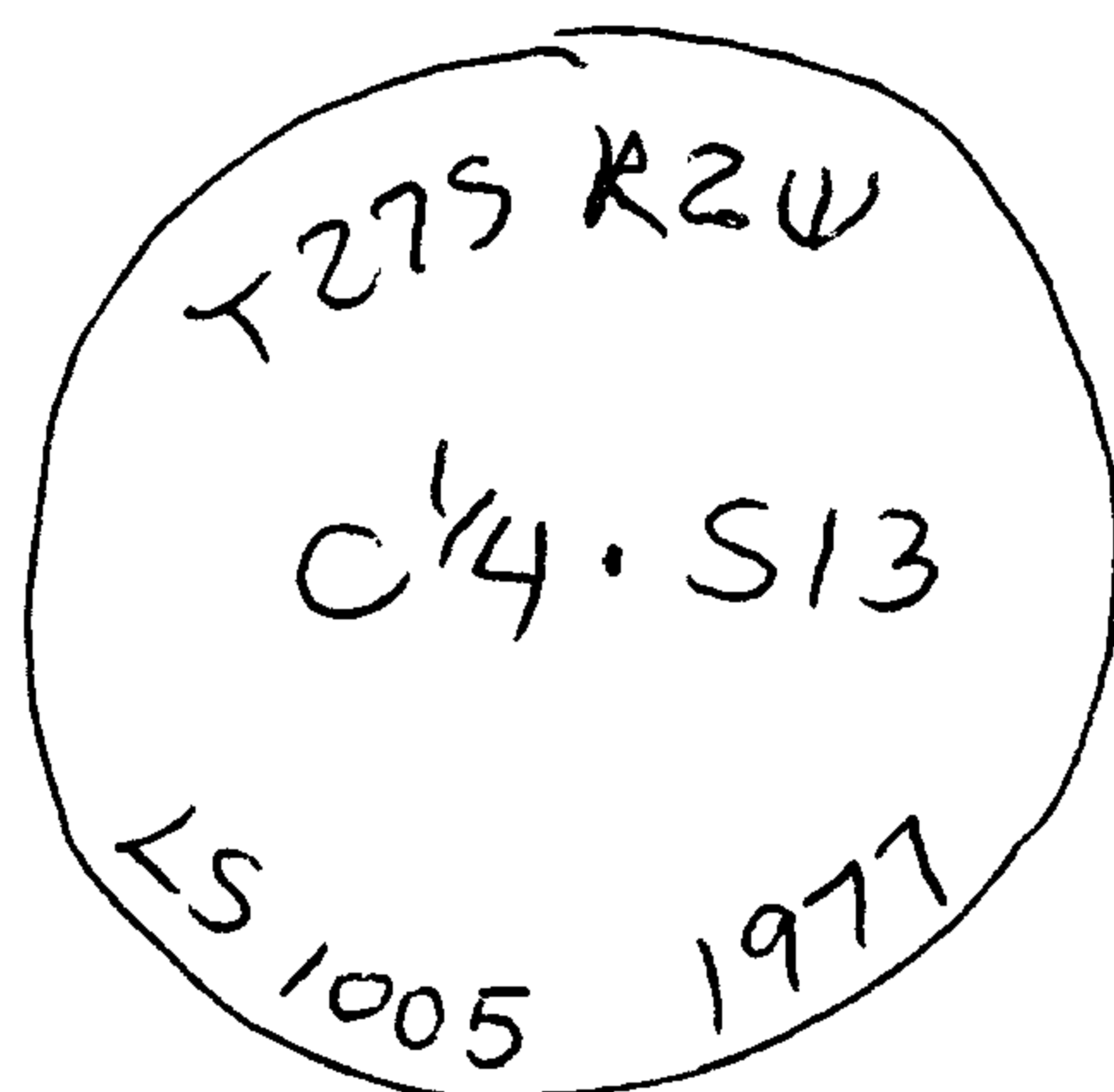
Comp. Declin. 20° E
 Agency U.S. FOREST SERVICE
 Party Chief LEONARD HERZSTEIN
 Notekeeper LEONARD HERZSTEIN
 Witnesses RANDY LOPEZ

REGISTERED Surveyor's Seal
 PROFESSIONAL
 LAND SURVEYOR

Maurice E. Farr

OREGON
 SEPT 23, 1977
 MAURICE E. FARR
 1181

12/13/84



DATE: MAY 17, 1982

Condition Report Only:

Not Found

Renewed

Unrecorded

Surveyed In

Referenced Out

dh.

Previous Renewal #'s 162, M65-20

Monument(s) Found: (Condition and Source) 2/12/84

2 1/2" I.P. WITH BRASS CAP MARKED AS
ABOVE, FIRMLY SET, PROJECTING 2"
ABOVE 3 FT. DIAMETER, MOUND
OF STONE; SET BY ROMANSO WARE,
L.S. # 1005, IN 1977. A STEEL
FENCE POST, FIRMLY SET, WITH U.S.F.S.
SIGNS # 54-2 & # 54-9 ATTACHED,
BEARS NORTH 30 FT.

Accessories Found: (Condition and Source)

BTS MARKED BY WARE IN 1977:
A 12" HEMLOCK (1/2 DEAD), N69°E, 35± FT.,
WITH SCRIBE MARKS "C1/4 S13 BT" AND
ALUMINIUM WASHER STAMPED "LS 1005"
VISIBLE ON PARTLY HEAVED DOUBLE
BLAZE.

#221 X

C.S. FILE NO. 59/30

62/15-11 Page 1 of 1

A 25" HEMLOCK, S32°W, 28⁷ FT., WITH
SCRIBE MARKS "C¹/4S13BT" AND ALUMINIUM
WASHER STAMPED "LS 1005" VISIBLE
ON PARTLY HEAVED DOUBLE BLAZE.

RENEWAL

Monument Set: (Procedure and Description) I

REFERENCE CORNER POSITION AS
DESCRIBED BELOW AND REMOVE
I.P. WITH BRASS CAP AND STEEL
FENCE POST.

New Accessories: (Description) NEW R.P.S:

SET 60 d NAIL IN BASE OF 68" D. FIR
SNAG (ON EAST SIDE OF TREE). N68³/₄°W,
32⁹ FT. TO CENTER OF NAIL HEAD.

SET 60 d NAIL IN TOP OF 48" D. FIR STUMP
(6" FROM N.E. EDGE). S74¹/₂°E, 27⁶ FT TO
CENTER OF NAIL HEAD. ALL AVAILABLE TREES
ARE SCHEDULED TO BE CUT.

Location and Comments:

	<u>17°E</u>	Compass Declination
CORNER LIES	<u>U.S.F.S.</u>	Agency
IN OLD DIRT ROAD	<u>JIM LANDRUM</u>	Party Chief
WHICH IS NOW IN ^{TWC}	<u>LEONARD</u>	Notekeeper
UNDER NEW	<u>HERZSTEIN.</u>	Witnesses

ROAD CONSTRUCTION.

I.P. WITH BRASS CAP WILL BE RESET WHEN
TIMBER HARVESTING AND NEW CONSTRUCTION
HAS ENDED.