

FILED
RECEIVED

OREGON CORNER RESTORATION FORM

Section 12 Township 31S Range 2W

AUG 28 1984

County DOUGLAS Date JUNE 5, 1984

COUNTY SURVEYOR
DOUGLAS COUNTY, ORE.

Corner Designation

SECTION CORNER TO SECTIONS 7 & 18, T31S,
R1W AND SECTIONS 12 & 13 T31S, R2W,
WILLAMETTE MERIDIAN.

- Condition Report Only
- Not Found
- Renewed
- Unrecorded
- Surveyed In
- Referenced Out

Previous Renewals/Surveys, etc. _____

(R1W #19-199)

RRW: #12, #42, #223

Monument(s) & Accessories Found: (Condition and Source)

8" W. OAK CORNER TREE WITH 4 HEALED BLAZES AND A 4" X 6" X 13" SANDSTONE PROJECTING 1" ABOVE GROUND ON NORTH SIDE OF CORNER TREE WITH "+" ON TOP, BOTH MARKED BY BEN IRVING IN 1931. CORNER TREE IS ACTUAL CORNER POSITION PER IRVING IN 1931. FOUND 1" ~~DIAMETER~~ DIAMETER IRON PIPE 6" LONG, 12" BELOW GROUND, ^{NORTH OF CORNER TREE,} WHICH IS THE REMAINS OF I.P. AND B.C. SET BY JOHN POWELL, COUNTY SURVEYORS OFFICE, IN 1966.

ACCESSORIES FOUND: ~~ORIGINAL~~ REMAINING ORIGINAL BTS:

A ROTHOLE, BEARS S07°W, 72.6 FT.

Monument Detail

A 9" W. OAK SNAG, N37°W, 12⁷ FT. (REC. N12°W, 10⁶ FT) WITH ROTTED HEALED BLAZE VISIBLE ON INSIDE OF TREE. ^{Sketch}

AND BTS MARKED BY IRVING IN 1931:

A 7" W. OAK STUMP, N20°E, 12² FT. (REC. 11⁹ FT) WITH HEALED ~~BLAZE~~ BLAZE.

A 7" W. OAK, S42°W, 8² FT. (REC. 8⁶ FT) WITH HEALED DOUBLE BLAZE.

AND BTS MARKED BY JIM LANDRUM, LS 2024, IN 1983:

A 9" D. FIR, N43°E, 64² FT. WITH SCRIBE MARKS "T31S R1W S7 BT" VISIBLE ON DOUBLE BLAZE.

A 7" D. FIR, S63°E, 78² FT. WITH SCRIBE MARKS "T31S R1W S10 BT" VISIBLE ON SINGLE BLAZE.

A 7" W. OAK N89°W, 9⁴ FT. WITH SCRIBE MARKS "T31S R2W S12 BT" VISIBLE ON SINGLE BLAZE.

Monument Set (Procedures and Description)

SET A REFERENCE MONUMENT: A 2" ⁴ DIAMETER IRON PIPE, 32" LONG, SET 28" IN GROUND WITH BRASS CAP MARKED AS SHOWN ABOVE AND A 2 FT. DIAMETER MOUND OF STONE FLUSH TO TOP OF B.C. RM IS NORTH, 0⁶ FT FROM CORNER POSITION. REMAINS OF PREVIOUS I.P. PLACED IN-SIDE OF NEW I.P. BURIED STONE ALONG SIDE.

New Accessories:

SET 6" FT. STEEL FENCE POST EAST, 2' FT. WITH USFS SIGN #54-4 ATTACHED.

Location & Comments

CORNER IS S10°W, 50 FT. FROM JUNCTION OF USFS ROADS # 3131-860 & -865.

Compass Declination 17°E

Firm/Agency U.S.F.S.

Address 2900 STEWART PARKWAY ROSEBURG, OR, 97470

Party Chief LEONARD HERZSTEIN

Notes LEONARD HERZSTEIN

Witness RANDY LOPEZ.

Surveyor's Seal

REGISTERED PROFESSIONAL LAND SURVEYOR

Maurice E. Farr
OREGON
SEPT 23, 1977
MAURICE E. FARR
1181

July 9, 1984

#224 T31-2 ✓
#201 T31-1 ✓

C.S. File No. 62/15-4C

GOVERNMENT CORNER RESTORATION FORM

Township 31s Range: 2W 1W 12&13 Sec. 7& 18 County DOUGLAS

State OREGON Date MARCH 28, 1983 No. _____

Corner Designation

SECTION CORNER TO SEC. 7 & 18, T31S-R1W. & SEC. 12 & 13, T31S-R2W.

- Condition Report Only
- Not Found
- Renewed
- Unrecorded
- Surveyed In
- Referenced Out

MONUMENT DETAIL

Previous Renewals 12, 12(T31-2W) 19(T31-1W)

Monument(s) Found: (Condition and Source)

8" W. OAK CORNER TREE WITH 1 HEALED BLAZES AND A
1"x6"x13" SANDSTONE LYING ALONGSIDE WITH "4" ON TOP
& 3, 6, 6 notches ON 3 EDGES; BOTH ESTABLISHED BY BEN
IRVING, COUNTY SURVEYORS OFFICE, IN 1931.
SEARCHED FOR AND DID NOT FIND I.P. & BRASS CAP SET
BY JOHN POWELL, COUNTY SURVEYORS OFFICE, IN 1966.
CORNER TREE IS ACTUAL CORNER POSITION PER IRVING
IN 1931.

Accessories Found:

- ORIGINAL B.T.s:

A- 18" W. OAK, S57°E, 58.0 FT. (REC. 57.1 FT. TO CHAINING NOTCH) WITH SCRIBE MARKS "S18"
VISIBLE ON PREVIOUSLY OPENED DOUBLE BLAZE AND SCRIBE MARKS "T3 R", MARKED BY IRVING IN
1931, VISIBLE ON PARTIALLY HEALED DOUBLE BLAZE.

A- ROOTHOLE, S07°W, 72.6 FT.

A- ROOTHOLE, N10°E, 51.5 FT. (REC. N17°E, 49.5 FT.) WITH BURNED 15" OAK STUMP ALONGSIDE,
WITH OLD AXE MARK VISIBLE.

A- 9" W. OAK SNAG, N37°W, 12.7 FT. (REC. N12°W, 10.6 FT.) WITH ROTTED HEALED BLAZE VISIBLE
ON INSIDE OF TREE.

- AND B.T.s MARKED BY IRVING IN 1931:

A- 7" W. OAK, N28°E, 12.2 FT. (REC. 11.9 FT.) WITH HEALED DOUBLE BLAZE.

A- 7" W. OAK, S42°W, 8.0 FT. (REC. 8.6 FT.) WITH HEALED DOUBLE BLAZE.

A- 16" D. FIR, N55°W, 42.2 ft. (REC. 41.6 FT.) WITH PREVIOUSLY OPENED DOUBLE BLAZE.

#199 T31-1 ✓
#223 T31-2 ✓

62/15-A
59/30 C

RENEWAL

Monument Set (Procedure and Description)

Monument Detail

RESET STONE 12" IN GROUND WITH "++" ON TOP ON NORTH SIDE OF CORNER TREE.

New Accessories

NEW B.T.s MARKED:

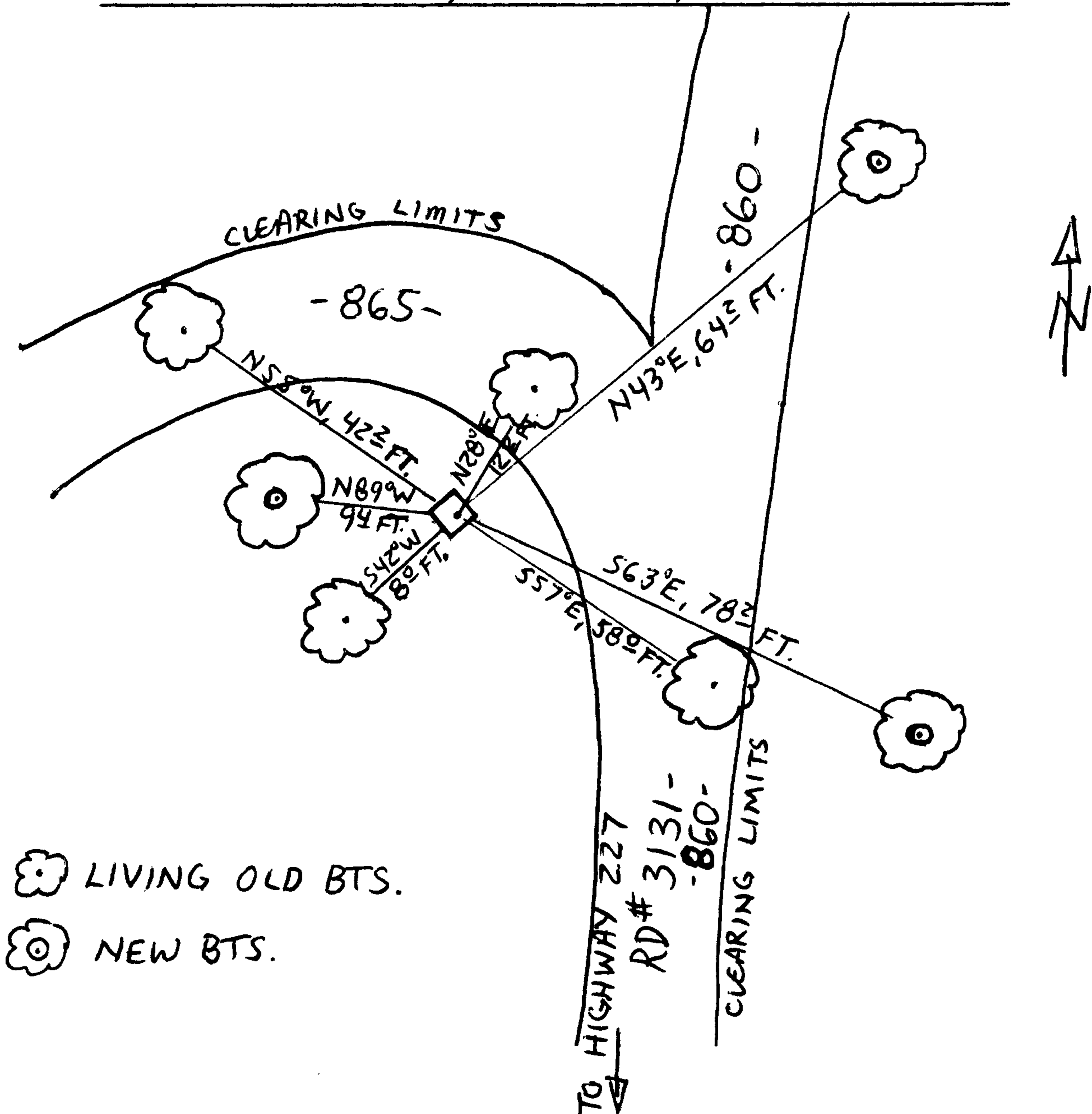
A- 9" D. FIR, N43°E, 64.2 FT. SCRIBED "T31SR1WS7BT" ON DOUBLE BLAZE.

A- 7" D. FIR, S63°E, 78.2 FT. SCRIBED "T31SR1WS18BT" ON SINGLE BLAZE.

A- 7" W. OAK, N89°W, 9.4 FT. SCRIBED "T31SR2WS12BT" ON SINGLE BLAZE.

A 3/4" D. BRASS WASHER, STAMPED "L S 2024", IS NAILED IN BASE OF BLAZE ON EACH NEW B.T.

Sketch of Monument, Accessories, and General Area



Location & Comments

EXISTANT B.T.s IN NE, SE, & NW QUADRANTS FALL WITHIN THE CLEARING LIMITS OF NEW ROAD CONSTRUCTION (USFS RD. # 3131-860 & -865). MARKED NEW B.T.s THAT WILL BE OUTSIDE CLEARING LIMITS. CORNER TO BE CHECKED AND BRASS CAP SET WHEN ROAD CONSTRUCTION IS FINISHED IN 1984 or '85.

Comp. Declin. 17° E

Agency U.S. FOREST SERVICE

Party Chief JIM LANDRUM, L.S. 2024

Notekeeper LEONARD HERZSTEIN

Witnesses LEONARD HERZSTEIN

Surveyor's Seal REGISTERED PROFESSIONAL LAND SURVEYOR

Signature of James N. Landrum and OREGON FEBRUARY 4, 1983 JAMES N. LANDRUM 2024